



18 Arabian Court, HINDMARSH VALLEY, SA 5211

A Rare Valley Find. Expansive Home with Land & Lifestyle Appeal

Nestled in the peaceful surrounds of Hindmarsh Valley, this impressive property at 18 Arabian Court delivers the perfect blend of space, functionality, and country lifestyle. Set on a generous parcel of land, with subdivision potential (STCC), the residence boasts a large, well-appointed home designed to cater for growing families or those seeking room to spread out. Complementing the spacious interiors, the property features extensive shedding, ideal for storage, workshops, or hobbies, while the wide-open grounds provide endless opportunities to enjoy the outdoors.

Features include

6 bedrooms all of good size

All with fans, all except 1 with BIR's

3 bedrooms with their own split system AC, Master with WIR and neat ensuite

3-way family bathroom with bath, separate laundry with rear access

Multiple living spaces - games rooms, toy rooms, office spaces, hobby spaces

TYPE: For Sale

INTERNET ID: 26P1462

SALE DETAILS

\$1,500,000

CONTACT DETAILS

Elders Goolwa

9 Cadell Street

Goolwa, SA

08 8555 3511

RLA: 213003

Ryan Bridges

0414 379 528

2 x fully appointed kitchens each with storage, DW and oven

Huge open plan extension at the rear with AC, fans, wood fire

10,000 square metres of land with Granite Island views, as well as sub division option

3- bay garage with concrete floor and power, additional 9 bay shed

Huge amount of rain water storage

With its expansive home, substantial shedding, and generous landholding, this property is a rare find that combines practicality with lifestyle appeal. Whether you're seeking space for family living, hobbies, or a base for work and play, 18 Arabian Court delivers it all in a peaceful rural setting just minutes from Victor Harbor. Opportunities of this scale and quality don't come along often, make it yours today.

Call Ryan Bridges on 0414379528 for further details.

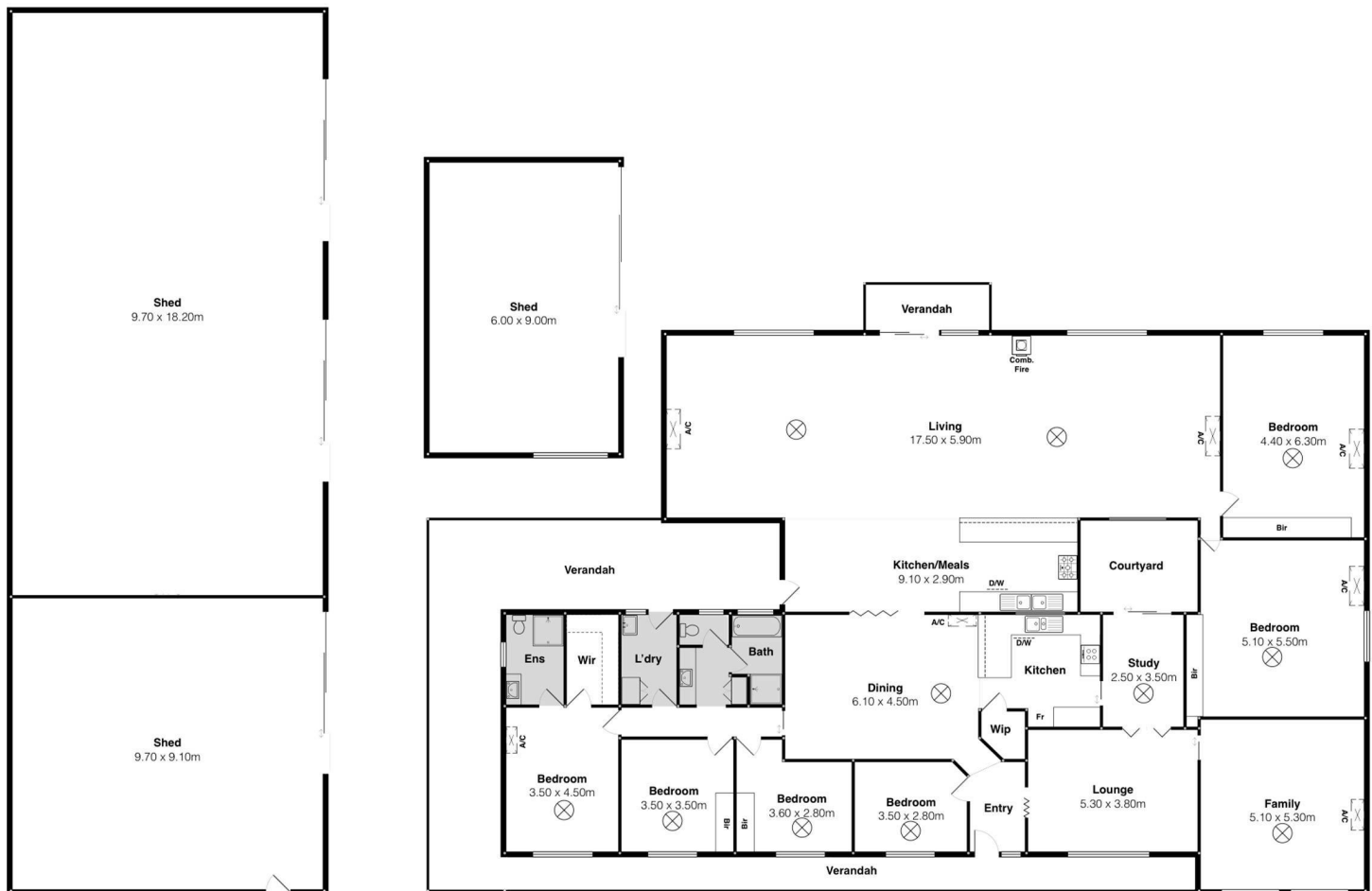
- Land Area 1.01 hectares
- Bedrooms: 6
- Bathrooms: 2
- 12 car garage











18 Arabian Ct, Hindmarsh Valley

Scale in metres. This drawing is for illustration purposes only. All measurements are approximate and details intended to be relied upon should be independently verified.

PRODUCED BY

