



1 Wakefield Drive, GOOLWA NORTH, SA 5214

Home Sweet Home

Positioned in relatively new and fast-growing pocket of peaceful Goolwa North, this property offers an exceptional opportunity for families, active retirees or investors alike. This spacious and well-maintained property features 4 generous bedrooms, 2 bathrooms and indoor & outdoor living spaces making it ideal for growing families and those who love to entertain.

Step inside to discover a light-filled open-plan living / dining area with the warmth of a combustion heater and the comfort of reverse cycle ducted air conditioning throughout.

Modern kitchen is both stylish and functional, complete with gas cooking, ample bench space, a WIPantry plus quality cabinetry. Adjacent to the kitchen is a practical dining and living space where large windows allow for plenty of natural light and create a welcoming atmosphere.

The master suite serves as a true parents retreat, featuring a WIRobe and a beautifully appointed ensuite with a double vanity and quality fittings. The remaining three bedrooms are all well-sized, each including BIRobes and ceiling fans, providing comfort and storage for family members. The main bathroom is equally well finished, offering a full-sized bath, shower and separate toilet.

The particulars contained herein are supplied for information only and shall not be taken as a representation in any respect on the part of the vendor or its agent. Interested parties should contact the nominated person or office for full and current details.

TYPE: For Sale

INTERNET ID: 26P1466

SALE DETAILS

\$750,000 - \$775,000

CONTACT DETAILS

Elders Goolwa

9 Cadell Street

Goolwa, SA

08 8555 3511

RLA: 213003

Lucas Bradley

0438 404 492

Sleek tiling flows through the main traffic areas, while all bedrooms are carpeted for added comfort and warmth during the cooler months.

For those who love outdoor living, the undercover alfresco area is a standout feature, complete with café blinds and a ceiling fan, this space allows for year-round entertaining or relaxed outdoor dining with family and friends.

Double garage UMR with auto doors securely houses 2 cars while the easy-care rear yard includes a garden shed for tools, bikes or weekend hobbies. A very handy additional feature is the side-access gate offering easy access to the rear yard also, plus external shutters on all front windows.

Located in a quiet, family-friendly neighbourhood, just moments from the river, public boat ramp, playground and basketball court, both primary and secondary schools and Goolwa township.

Whether you're looking to settle in and make it your forever home or searching for an investment in a desirable location, this is a property that delivers across the board.

*The property is currently tenanted to a lovely family at \$550 per week on a periodic basis, although they would love to sign a fixed-term agreement if offered.

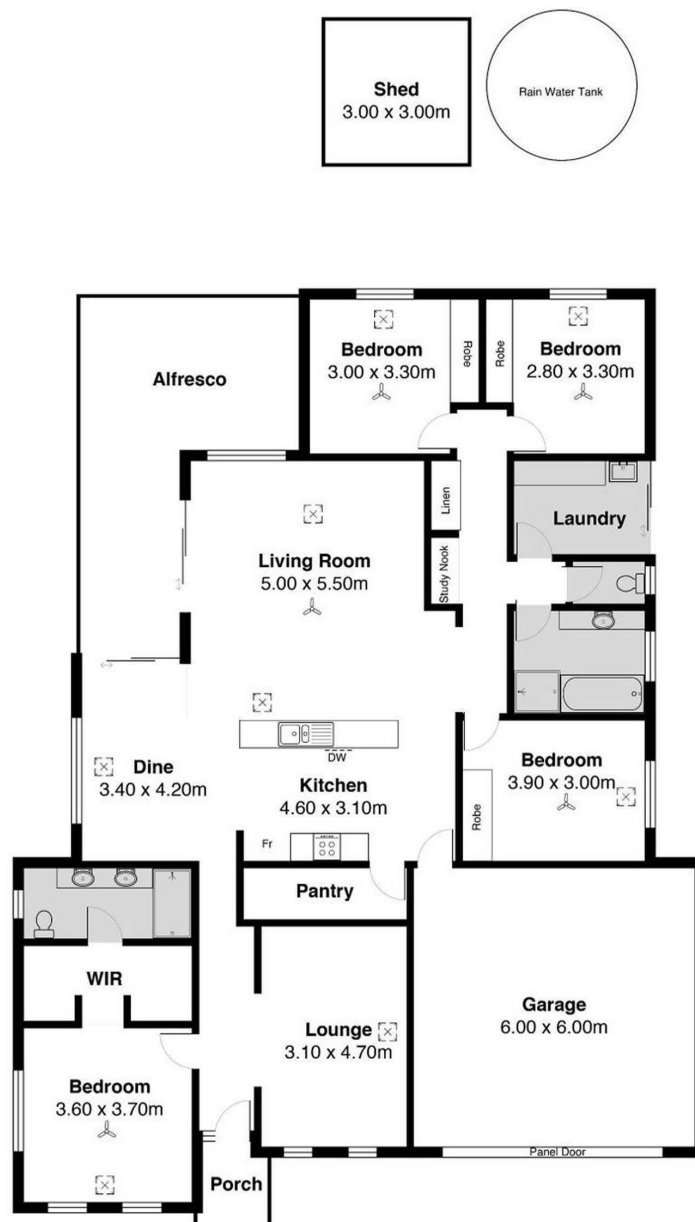
- Land Area 693.00 square metres
- Bedrooms: 4
- Bathrooms: 2
- Car Parks: 2











1 Wakefield Dr, Goolwa North

Scale in metres. This drawing is for illustration purposes only. All measurements are approximate and details intended to be relied upon should be independently verified.



PRODUCED BY
SOUTH COAST STUDIOS