

13 Eaton Avenue, GOOLWA BEACH, SA 5214

Ideal Coastal Living

13 Eaton Avenue is an outstanding beachside location that will provide the perfect spot to enjoy holidays all year round. Nestled behind the dunes, there is some protection from the prevailing winds with a private outlook. It is a short stroll through the dunes to the beach with Goolwa Surf Lifesaving Club and the award-winning Kuti shack a short hop away.

The home provides ample accommodation with both indoor and outdoor living options. Extensively renovated 10 years ago with quality fixtures and fittings, the owners have found the perfect balance between modern function and the "beach shack" vibe.

Features include:

3 double bedrooms and a downstairs "bunk" room;

Master bedroom with modern ensuite bathroom capturing coastal views;

Open plan living area with modern quality lights, flooring and air-conditioning;

Sleek modern kitchen with quality appliances;

TYPE: For Sale

INTERNET ID: 26P1473

SALE DETAILS

\$1,200,000

CONTACT DETAILS

Elders Goolwa

9 Cadell Street

Goolwa, SA

08 8555 3511

RLA: 213003

Ryan Bridges

0414 379 528

A unique timber surfboard serves as a feature breakfast bar and is one of a kind;

Rear, north-facing deck protected from the southerly winds provides additional outdoor living space;

Large ground floor laundry;

Additional downstairs toilet and hand basin with separate outdoor hot shower - perfect after a day at the beach;

Storeroom with ample space for all your beach and garden toys;

Rainwater harvesting plumbed to the house;

Automatic irrigation to the back garden;

New septic; and

New solar system.

You will not regret an inspection of this unique home and absolutely love the position at the gateway to the Southern Ocean 1 hour south of Adelaide. To view or to discuss further, contact Ryan Bridges on 0414379528.

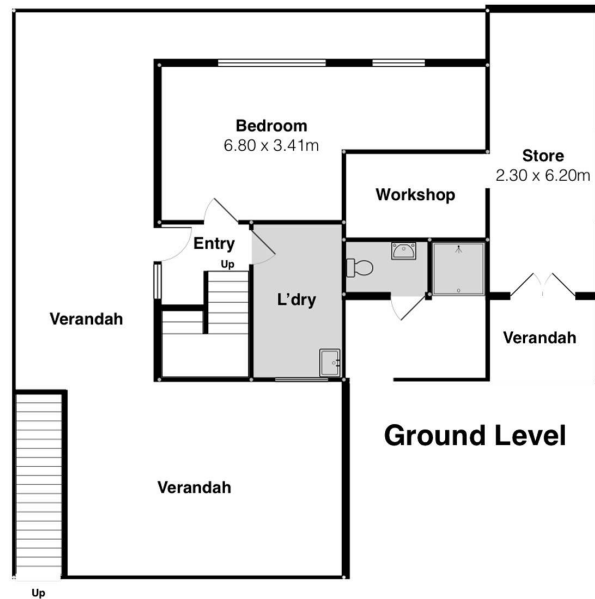
- Land Area 696.00 square metres
- Bedrooms: 4
- Bathrooms: 3











13 Eaton Ave, Goolwa Beach

Scale in metres. This drawing is for illustration purposes only. All measurements are approximate and details intended to be relied upon should be independently verified.



PRODUCED BY
SOUTH COAST STUDIOS