



43 Kingdon Place, GOOLWA SOUTH, SA 5214

Home Sweet Home

Positioned in a quiet and well-established pocket of Goolwa South, 43 Kingdon Place presents a neat and appealing home that offers comfort, functionality and potential. The residence comprises three well-proportioned bedrooms and a central bathroom, with a practical layout that caters to easy everyday living and provides a solid foundation for future improvements.

A standout feature of the property is the excellent shedding, complete with automatic roller doors, offering secure and versatile storage ideal for vehicles, tools & all the toys. The spacious yard provides ample room for children and pets to play, while also offering flexibility for outdoor entertaining, gardening or simply enjoying the open space and fresh coastal air.

Conveniently located close to all of Goolwa's key amenities, including shops, caf  s, schools, and medical facilities, the home also enjoys the added lifestyle benefit of being just a short stroll to the river and only a short drive to the beach. This sought-after location allows residents to enjoy a relaxed coastal lifestyle with everything you need close at hand.

Well suited to active retirees, first-home buyers looking to add their own personal touch

The particulars contained herein are supplied for information only and shall not be taken as a representation in any respect on the part of the vendor or its agent. Interested parties should contact the nominated person or office for full and current details.

TYPE: For Sale

INTERNET ID: 26P1511

SALE DETAILS

\$630,000 - \$650,000

CONTACT DETAILS

Elders Goolwa

9 Cadell Street

Goolwa, SA

08 8555 3511

RLA: 213003

Shenae Williams

0408 029 703

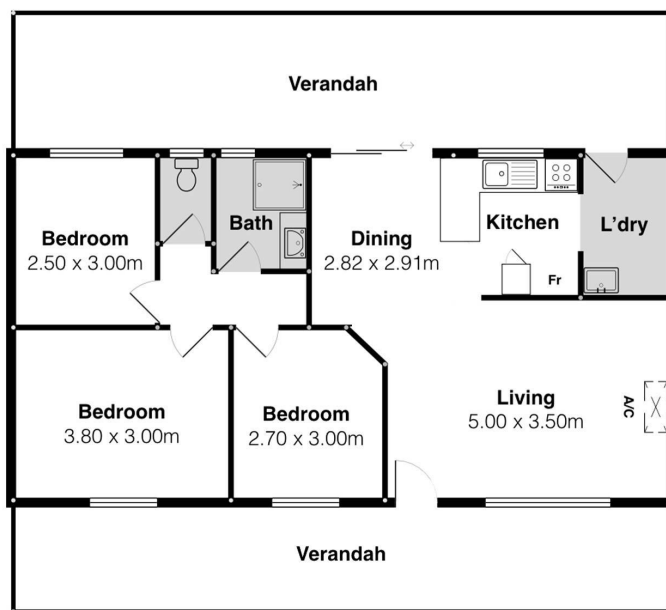
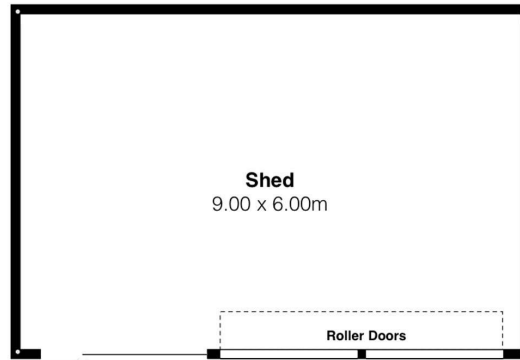
or investors seeking a well-located and appealing property, this home represents a complete and well-rounded package. An outstanding opportunity to secure a low-maintenance home in a desirable Goolwa South location, so close to the shops and river, offering lifestyle, convenience and future potential in equal measure.

- Land Area 696.00 square metres
- Bedrooms: 3
- Bathrooms: 1
- 3 car garage









43 Kingdon Pl, Goolwa South

Scale in metres. This drawing is for illustration purposes only. All measurements are approximate and details intended to be relied upon should be independently verified.



PRODUCED BY
SOUTH COAST STUDIOS