



8 Laxton Street, MCCRACKEN, SA 5211

Elevated Views & Coastal Living

Perched high on an elevated hill, this inviting family home enjoys a stunning scenic, panoramic outlook across McCracken Golf Course and the rolling hills beyond, a peaceful setting just moments from the beach and Victor Harbor township.

Step inside to a light-filled open plan lounge / dining / kitchen area, designed to make the most of the picturesque surrounds. Sliding doors lead to the expansive entertainer's deck offering a true bird's-eye perspective of the serene vista, the perfect spot to relax, host guests or simply take in the everchanging landscape.

The kitchen is both functional and family friendly, featuring a gas cooktop, dishwasher and a generous island bench where everyone can gather.

Accommodation is thoughtfully arranged along the hallway, comprising three well-proportioned bedrooms. The master suite includes its own ensuite, while a practical three-way main bathroom services bedrooms two and three.

Comfort is assured year round with ducted evaporative cooling, a gas combustion heater, solar system and gas hot water. All of this is set on an impressive 1,820m²

The particulars contained herein are supplied for information only and shall not be taken as a representation in any respect on the part of the vendor or its agent. Interested parties should contact the nominated person or office for full and current details.

TYPE: For Sale

INTERNET ID: 26P1521

SALE DETAILS

\$695,000

CONTACT DETAILS

Elders Goolwa

9 Cadell Street

Goolwa, SA

08 8555 3511

RLA: 213003

Lucas Bradley

0438 404 492

allotment, offering space, privacy and future potential.

Perfectly positioned less than 1km from Hayborough Beach for morning ocean swims and lazy family beach days and conveniently close to Victor Harbor Primary School, Coles, Bunnings and the city's amenitiesâ# with the added bonus of the golf course right on your doorstep.

An affordable and appealing opportunity to secure a delightful family home, ideal for both everyday living and relaxed coastal holidays alike.

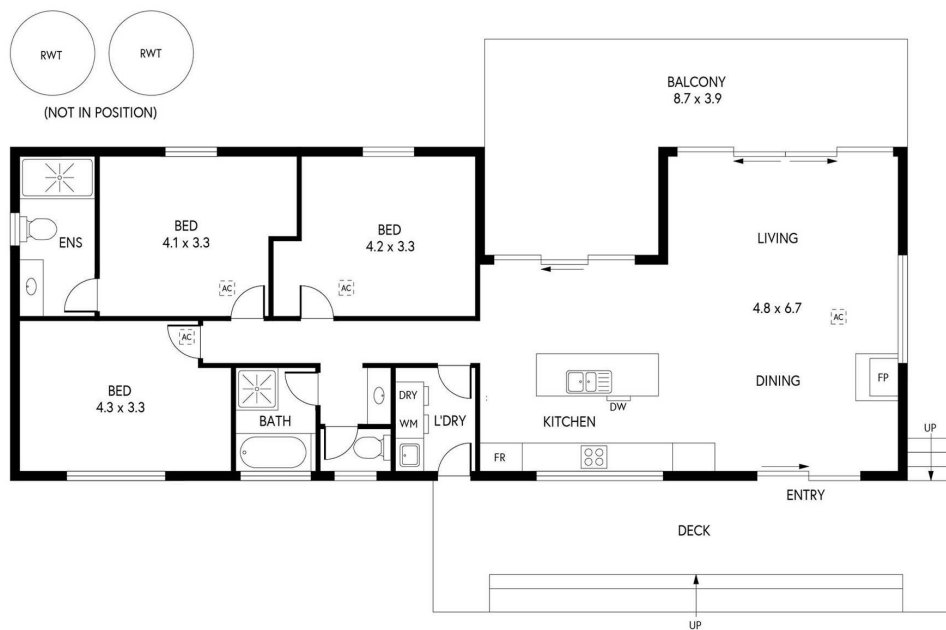
- Land Area 1,820.00 square metre
- Bedrooms: 3
- Bathrooms: 2











8 Laxton St, McCracken

Scale in metres. This drawing is for illustration purposes only. All measurements are approximate and details intended to be relied upon should be independently verified.



PRODUCED BY
SOUTH COAST STUDIOS