



3 Monada Court, HINDMARSH ISLAND, SA 5214

Ideal Island Living

A great opportunity to purchase a near new home, with all the hard work done. No long build times and no spending months on those finishing touches, here they are all done, with lots of extras that will make living here very comfortable and instant. A great design and a single level, that would see this make an ideal family home or a lock up and leave style retirement option.

Features Include:

4 bedrooms

Master with WIR and ensuite

Bedroom 2 with WIR

Bedrooms 3 & 4 with BIR's

Multiple living spaces

Open plan living with high ceilings and easy access to outdoors

Modern kitchen with workable bench spaces, DW and pantry

TYPE: For Sale

INTERNET ID: 26P1572

SALE DETAILS

\$840,000 - \$860,000

CONTACT DETAILS

Elders Goolwa

9 Cadell Street

Goolwa, SA

08 8555 3511

RLA: 213003

Ryan Bridges

0414 379 528

Family bathroom with bath and separate toilet

Separate laundry with good storage

Additional storage throughout

Quality blinds, and fixtures

Ducted reverse cycle air-conditioning

Secure, wind protected alfresco area with blinds

Fully landscaped gardens with exposed ag concrete, fencing and retaining

Neat, easy care gardens with RW storage and irrigation

Double carport UMR with extra space and access to rear yard

Lots of extras

Certainly, scope to change cosmetics to suit you but this really is about turning the key and living. You will be impressed by the cul-de-sac position, the size, the floor plan and all of the small details that make this a great package. To inspect or for further details, call Ryan Bridges on 0414379528

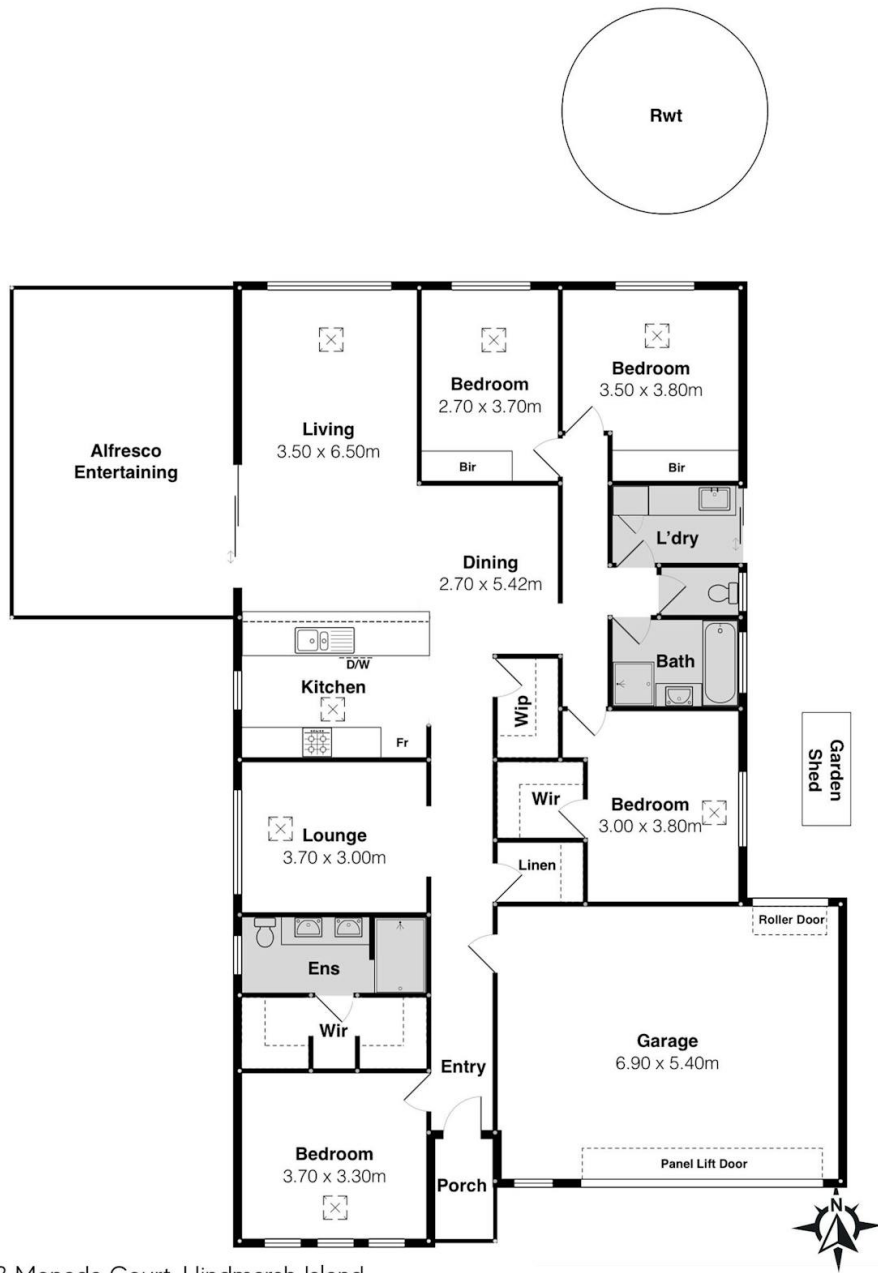
- Land Area 689.00 square metres
- Bedrooms: 4
- Bathrooms: 2
- Car Parks: 2











3 Monada Court, Hindmarsh Island

Scale in metres. This drawing is for illustration purposes only. All measurements are approximate and details intended to be relied upon should be independently verified.

PRODUCED BY

SOUTH COAST STUDIOS