



## 27 Gow Drive, HINDMARSH ISLAND, SA 5214

### Island Escape with Endless Lifestyle Appeal

Set amongst the peaceful surrounds of sought after Hindmarsh Island and only minutes from the heart of Goolwa, this outstanding lifestyle property delivers the perfect blend of space, privacy and convenience. Positioned on approximately 2.5 acres, the property boasts a substantial family home complemented by a large shed, offering endless flexibility for tradies, boat storage or those simply seeking room to move. Enjoy the relaxed island lifestyle while still being close to caf  s, shops, schools, golf courses and the popular River and coastal attractions the Fleurieu Peninsula is renowned for. A quality home with endless features, a must see.

#### Features Include:

4 good sized bedrooms

Bedroom 2, 3 & 4 with fans and BIR's

Master with WIR and ensuite with double basin and double shower

Large formal living / theatre room

Spacious open plan living with real wow factor

**TYPE:** For Sale

**INTERNET ID:** 26P1579

#### SALE DETAILS

**\$1,495,000 -  
\$1,525,000**

#### CONTACT DETAILS

**Elders Goolwa**  
9 Cadell Street  
Goolwa, SA  
08 8555 3511  
RLA: 213003

**Ryan Bridges**  
0414 379 528

Well appointed kitchen with 5.5m bench and huge WIP  
Ceiling fans and feature stacked stone wood fire place  
Family bathroom with bath, separate toilet and large separate laundry  
Great storage with WIP, linen presses and wardrobes  
Ducted evaporative AC throughout  
Integrated, zoned multi media system  
Fully enclosed alfresco dining area  
Well maintained, grassed and paved internal yard  
Double garage UMR with auto door and easy internal access  
Huge rear garage with 3 phase power  
Includes bathroom and laundry, teenagers retreat  
4.5 tonne Tuff Lift Hoist Included  
Bar area / pool room with wood fire and stunning bridge and river views  
Well maintained property with upgraded driveway  
Mains water, as well as 22,000g of rain water plumbed  
11kw solar system to ease those bill pressures

A rare opportunity to secure the space, the lifestyle and the island serenity that you have been dreaming of. All this just moments to the vibrant township of Goolwa. A must see! To inspect or for more information, contact Ryan Bridges on 0414379528.

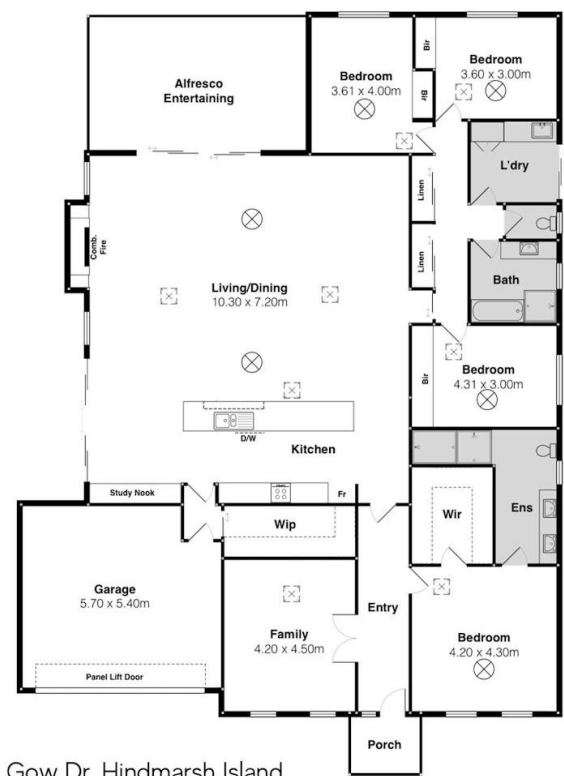
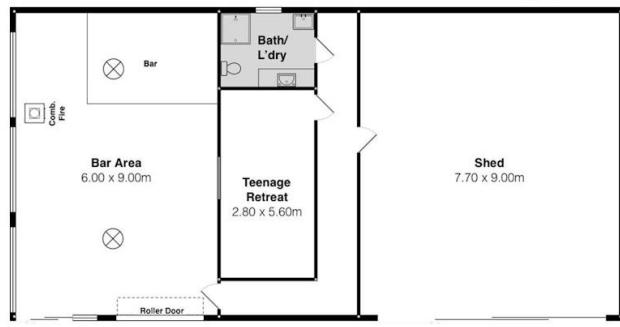
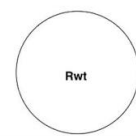
- Land Area 2.5 acres
- Bedrooms: 4
- Bathrooms: 3
- Double garage
- Double carport











27 Gow Dr, Hindmarsh Island

Scale in metres. This drawing is for illustration purposes only. All measurements are approximate and details intended to be relied upon should be independently verified.

PRODUCED BY  
SOUTH COAST STUDIOS