



2 Thomas Bell Avenue, WERRINGTON COUNTY, NSW 2747

Peaceful Family Home

A unique opportunity to acquire a family home in a quiet pocket of Werrington County. This peaceful home offers the chance to relax away from the hustle and bustle, while remaining within 15 minutes of the Penrith City Centre and 30 minutes to the Western Sydney International Airport.

Viewing of this home will impress as it offers the opportunity for a new owner to enjoy a host of features including a fireplace on a cool winters night, to the large backyard with undercover entertaining area for those summer afternoons.

This home was purchased by this family back in 2010 and they knew that this was the place to raise their family. Now it's time for them to move away and an opportunity for someone else to enjoy all this home has to offer.

Features:

- Fireplace
- Large undercover entertaining area

TYPE: Sold

INTERNET ID: 27P4560

SALE DETAILS

\$1,065,000

CONTACT DETAILS

Elders Penrith
348 High Street
PENRITH, NSW
02 4732 5055

Joey Lustri
0431 745 664

- Built-ins to all bedrooms
- Natural light with 2 skylights
- Polished timber floors
- 800sqm corner block
- Double lock up garage

Distance to amenities:

Werrington County Public School - 500m

Supa IGA Werrington - 1.2km

Cambridge Park High School - 2.9km

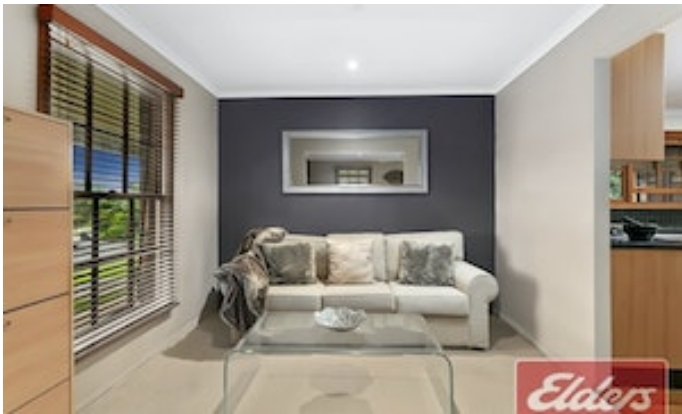
Werrington Station - 3.1km

Penrith Westfields - 6.7km

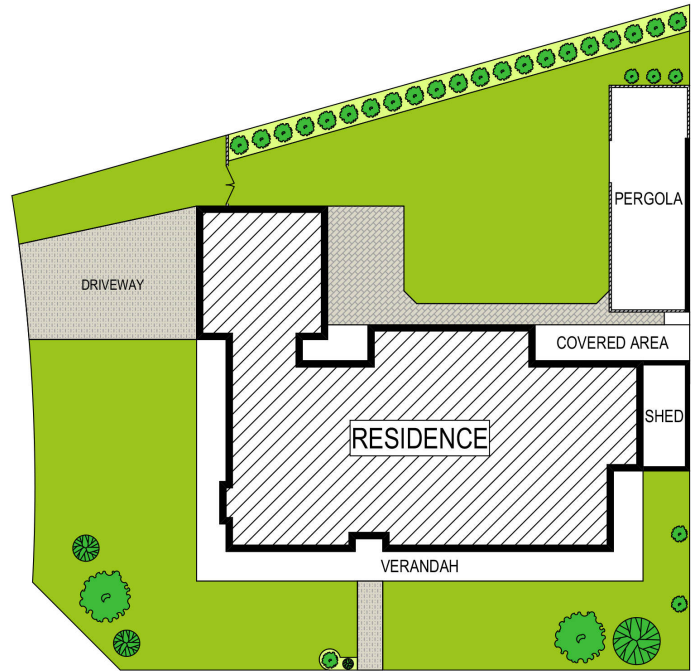
Western Sydney University - 7.6km

Disclaimer: While we have been provided with the above inclusions and information, Elders Real Estate Penrith/Wallacia gives no guarantees regarding the accuracy or up-to-date nature of the details at hand. All interested parties are encouraged to make their own independent enquiries in order to confirm whether the information is accurate.

- Land Area 800.00 square metres
- Bedrooms: 4
- Bathrooms: 2
- Double garage







Disclaimer: The above information has been furnished to us by the vendors of the property, Rpdata Google and independent recourses. We have not verified whether or not the information is accurate and do not have any belief one way or the other in its accuracy. We do not accept any responsibility to any person for its accuracy and do no more than pass it on. All interested parties should make their own inquiries in order to determine whether or not this information is in fact accurate.

2 Thomas Bell Avenue, Werrington County

