



63 Kepa Road, MURRAY BRIDGE, SA 5253

5 Bedroom Home on 164.5 Acres only 45 minutes by freeway from Adelaide

66.57 hectares, 164.50 acres

A fantastic opportunity to purchase a wonderful rural lifestyle property, featuring 164.5 acres, 5-bedroom brick veneer family home that comprises 2 self-contained living areas. Located only 5 minutes from the centre of Murray Bridge, with easy access to the freeway and 45 minutes from Adelaide.

63 Kepa Road has 2 road frontages and would ideally suit a number of uses including small hobby farm to have some sheep, or a few steers as well produce some hay. The land is generally flat and comprises sandy loam over limestone.

The home comprises separate living areas with both having kitchen and bathroom facilities, family rooms. The main living area has a reverse cycle air conditioner and the 2nd living area has a slow combustion heater. There is a double car garage under the main roof with roller door and an attached carport.

Outside a 6m x 9m shed with 2 roller doors for extra car garaging or workshop. The former chicken sheds would ideally suit converting to horse stable or storage. The

TYPE: Sold

INTERNET ID: 300P105185

SALE DETAILS

**Exp of Interest Closing
10th Feb 12noon (USP)**

CONTACT DETAILS

Murray Bridge

93 Railway Terrace

TAILEM BEND, SA

08 8572 8006

RLA: 62833

Gavin Clarke

0417 859 733

property has mains water, rainwater tanks, solar and 3 phase power available.

Certainly, a rare opportunity to purchase a rural property, close to the Rural City of Murray Bridge, only minutes from the River Murray and Ski Reserves and approximately 30 minutes to The Bend Motorsport Park and easy access to the freeway, Adelaide Hills and Langhorne Creek Wineries. 63 Kapa Road offers that rare and grand chance for an enviable rural lifestyle, whilst maintaining easy access to schooling, shopping, recreational and sporting facilities.

EOI - Closing Friday 10th Feb 2023 at 12 noon (USP)

Details Gavin Clarke 0417 859 733 John Robinson 0409 609 457

Disclaimer: We have in preparing this information used our best endeavours to ensure that the information contained herein is true and accurate but accept no responsibility and disclaim all liability in respect of any errors, omissions, inaccuracies, or misstatements that may occur. Prospective purchasers should make their own enquiries to verify the information contained herein. Elders Real Estate RLA62833

- Land Area 66.570788 hectares
- Bedrooms: 5
- Bathrooms: 2

HOMESTEAD

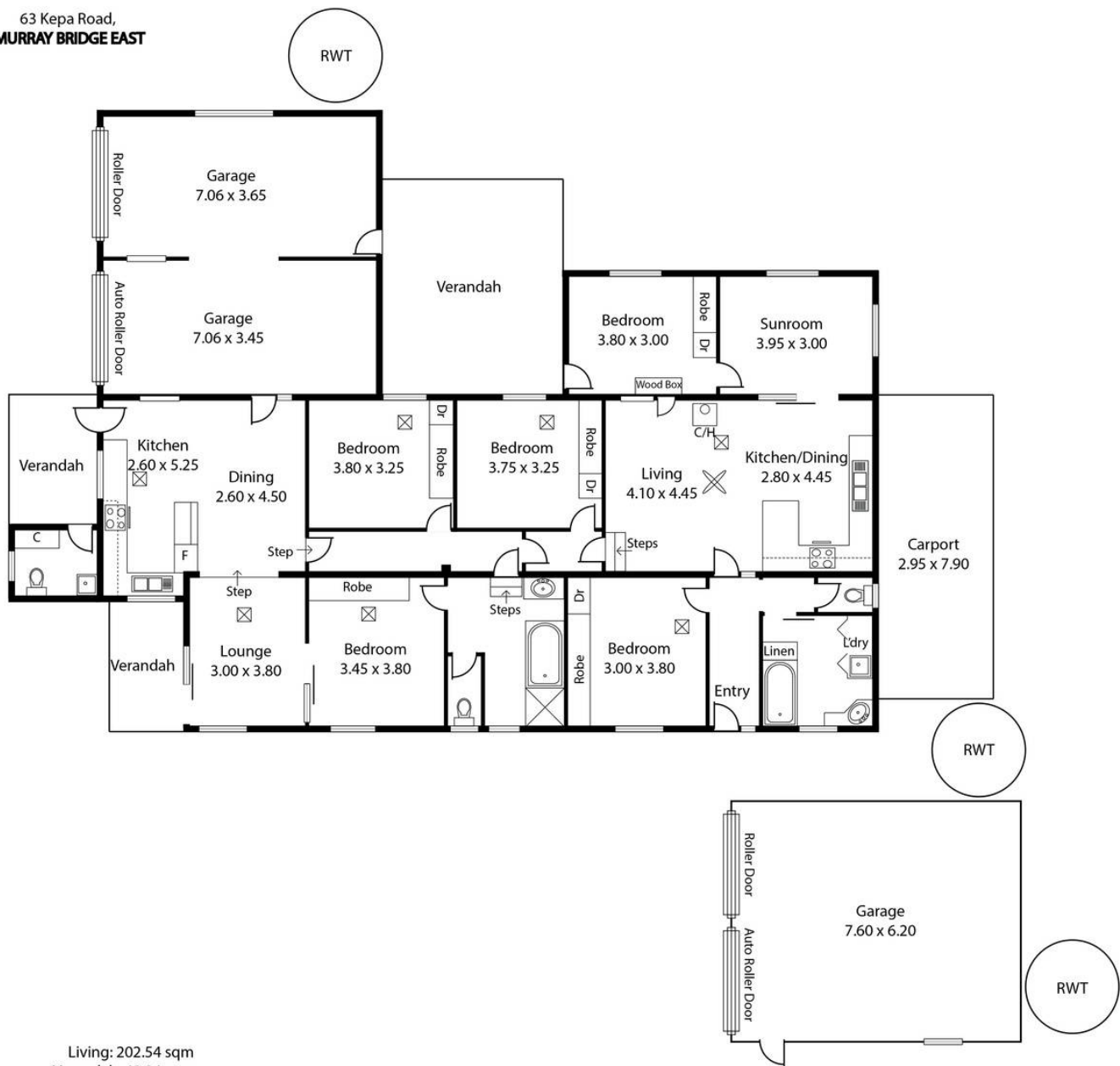
Bedrooms	5
Bathrooms	2







63 Kepa Road,
MURRAY BRIDGE EAST



This Drawing is for illustration purposes only.
Not To Scale. All measurements are internal and approximate.
Details intended to be relied upon should be independently verified.
Produced by Open2view.com