



23A Button Street, MOWBRAY, TAS 7248

Family home on unit block

This 1930's character home has all the space for a large family home and all the practical convenience of a small unit sized yard.

Consists of three bedrooms, two living areas and a large loft space so there are spaces for a wide variety of your family's needs.

The master bedroom features built ins and a new ensuite, while the other two bedrooms are spacious.

The main hub of the home consists of a kitchen/dining area with family room, and a completely separate lounge/ theatre room, for the serious movie watcher or gamer.

The funky loft space sits above the theatre room and is a great large, carpeted space of 6.2 by 5mtrs.

Offering both wood and heat pump options, the house will be kept cozy.

TYPE: Sold

INTERNET ID: 300P105731

SALE DETAILS

\$525,000

CONTACT DETAILS

Elders Towns Shearing

58 Elizabeth Street
Launceston, TAS
03 6348 3900

Ben Towns
0438 937 044

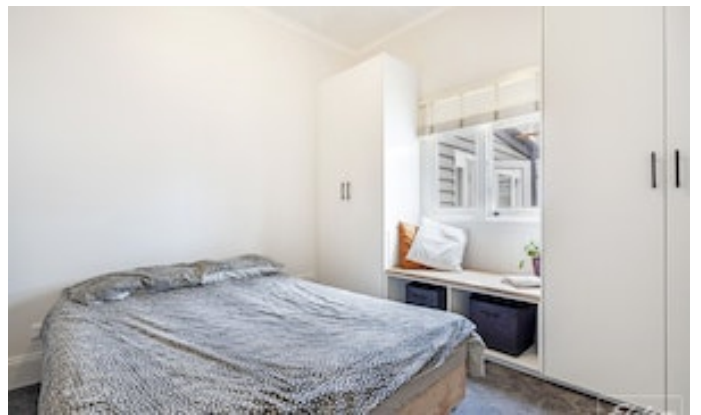
Outside the entertaining deck takes in the views through Invermay and on to the city of Launceston.

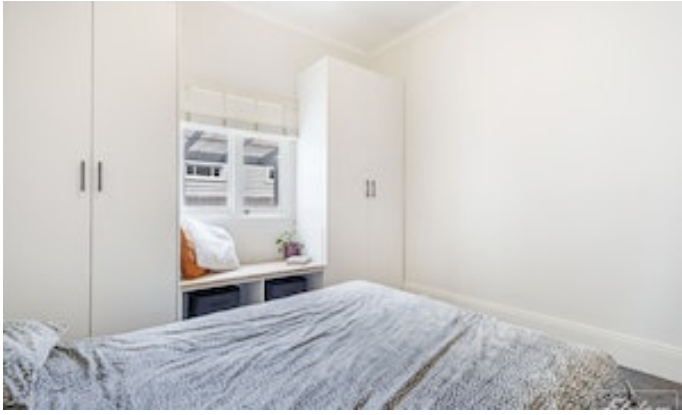
Just meters from the front entrance to Launceston Grammar school, a short walk to Mowbray shopping precinct and only minutes to Launceston city.

Other features: Close to Schools, Close to Shops, Close to Transport

- Land Area 649.00 square metres
- Building Area: 164.00 square metres
- Bedrooms: 3
- Bathrooms: 2
- Single carport

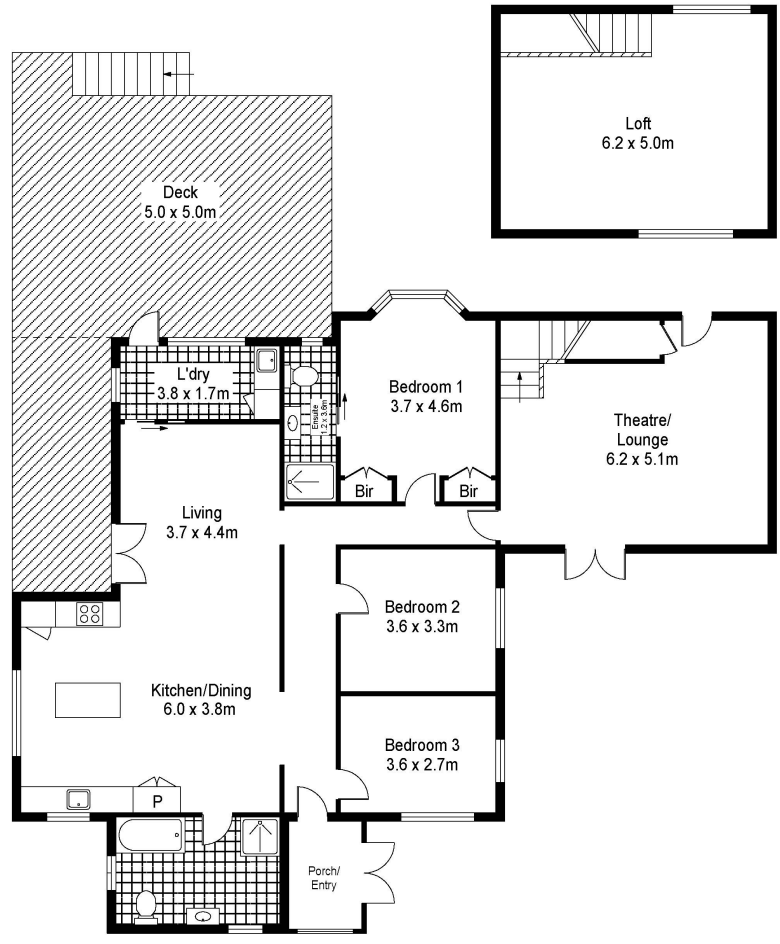








23A BUTTON STREET, MOWBRAY, TAS, 7248



Towns Shearing



Scale in metres. Indicative only. Dimensions are approximate. All information contained herein is gathered from source we believe to be reliable. However we cannot guarantee its accuracy and interested persons should rely on their own enquiries.

Area	M ²
Living	182
Deck	56
Total	238