



65 Beach Road, SOUTH BUNBURY, WA 6230

INVESTORS DREAM - 4x TWO STOREY TOWNHOUSES - SOUTH BUNBURY

These 4 Townhouses are under one certificate of title providing a massive opportunity for investors looking for a passive income or to grow their portfolio.

Four executive townhouses, each featuring 4 bedrooms, 3 bathrooms, an activity room, an open-plan kitchen, dining, family area, and a versatile study or guest room. All units are currently tenanted, offering immediate rental income. Ideally located in the highly sought-after South Bunbury area, these properties are central to the beach, Plaza Shopping Centre, top schools, and the CBD.

Low Level Features

- Open foyer
- Contemporary kitchen with glass splashback, stone benchtops, and gas cooktop
- Open-plan living and dining rooms with reverse-cycle split air conditioning
- Spacious study or guest room

TYPE: Sold

INTERNET ID: 300P105973

SALE DETAILS

\$2,300,000

CONTACT DETAILS

Bunbury
11 Stirling Street
Bunbury, WA

Anthony (skip) Schirripa
0417 292 923

- Bathroom with toilet and shower
- Under-stair storage
- Laundry with linen cupboard
- Security alarm system
- 9-foot ceilings with shadow-line details
- Neutral décor
- Large modern floor tiles

Upper Level Features

- Versatile activity room
- Large master bedroom with built-in robe and private balcony
- Ensuite bathroom with toilet and shower
- Two additional spacious bedrooms
- Air conditioning in each bedroom
- Main bathroom featuring double vanity, shower, and toilet
- Elegant raked ceilings
- Block-out blinds for privacy and comfort
- High-quality carpeting throughout

Outdoor Features

- Double garage attached to the house
- Convenient storeroom
- Pergola extending from the living area
- Spacious, paved entertaining area
- Enclosed backyard with a low-maintenance lawn
- High fencing for enhanced privacy
- Side access for added convenience
- Generous block size of 1,609 sqm*
- Quality construction by private builder Tallwood Constructions
- Built around 2008
- Zoned R20/30

Lease Information

All town houses are currently lease

Unit 1 - \$740 per week â## 25/04/2025

Unit 2 - \$700 per week â## 19/06/2025

Unit 3 - \$700 per week â## 27/03/2025

Unit 4 - \$780 per week â## 29/11/2026

Land Rates: \$10,795.72 per year*

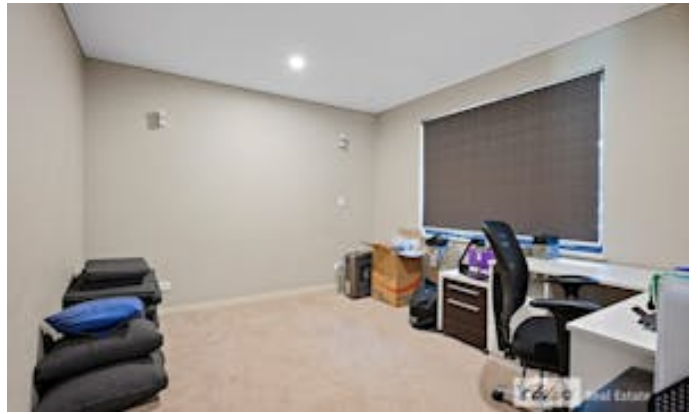
Water Rates: \$1,281.53 per year* â## Per Unit

Buyers Note: All measurements/dollar amounts are approximate only and generally marked with an * (Asterisk) for reference. Boundaries marked on images are a guideline and are for visual purposes only. Buyers should complete their own due diligence, including a visual inspection before entering into an offer and should not rely on the photos or text in this advertising in making a purchasing decision

Other features: Carpeted, Close to Schools, Close to Shops, Close to Transport

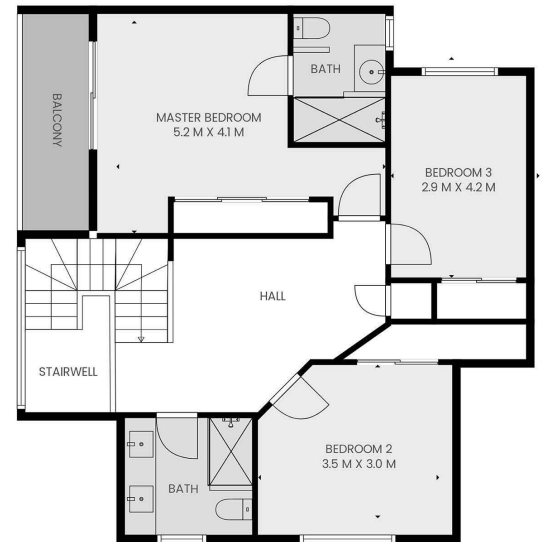
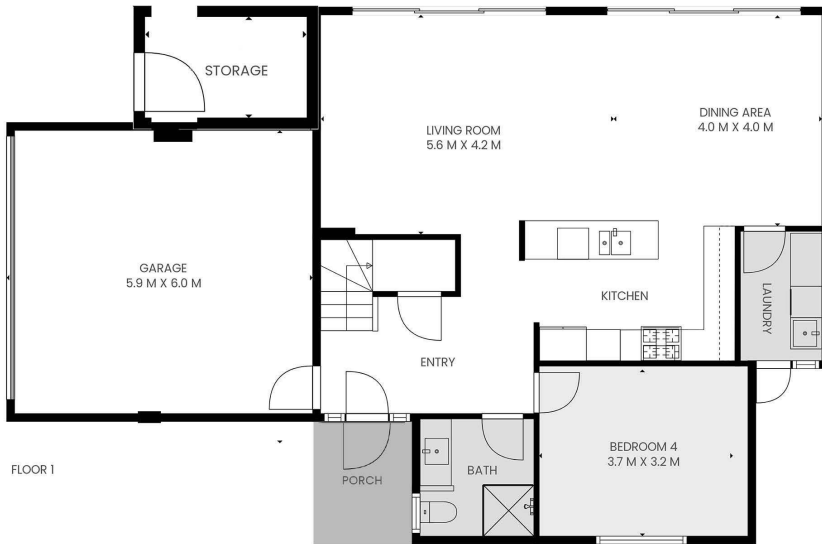
- Land Area 1,609.00 square metre
- Bedrooms: 4
- Bathrooms: 3
- Double garage
- Ensuite







Unit 1, 65 Beach Road, South Bunbury WA 6230



TOTAL: 162 m2

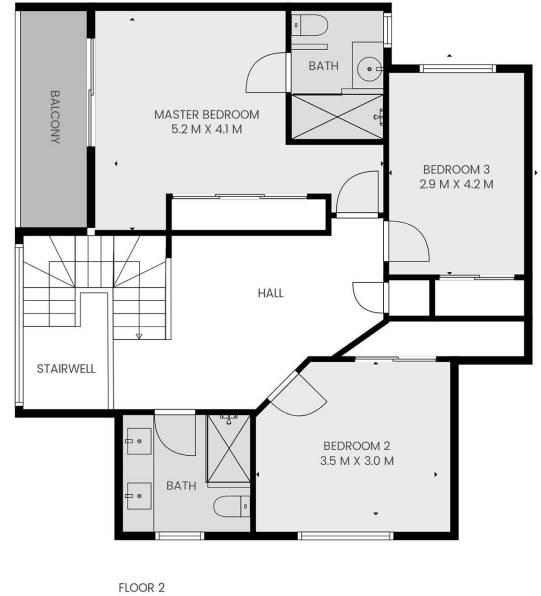
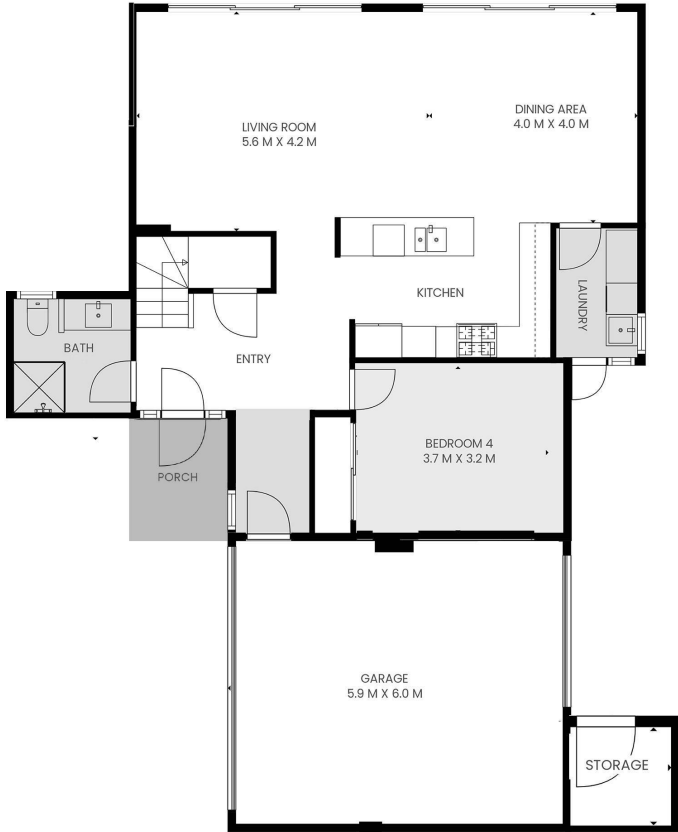
FLOOR 1: 87 m2, FLOOR 2: 75 m2

EXCLUDED AREAS: GARAGE: 31 m2, STAIRWELL: 3 m2, BALCONY: 5 m2

MEASUREMENTS ARE CALCULATED USING ADVANCED TECHNOLOGY BY EVENTUALLY CREATIVE. DEEMED HIGHLY RELIABLE BUT NOT GUARANTEED.



Unit 2, 65 Beach Road, South Bunbury WA 6230



TOTAL: 162 m²
FLOOR 1: 87 m², FLOOR 2: 75 m²
EXCLUDED AREAS: GARAGE: 31 m², STAIRWELL: 3 m², BALCONY: 5 m²

MEASUREMENTS ARE CALCULATED USING ADVANCED TECHNOLOGY BY EVENTUALLY CREATIVE. DEEMED HIGHLY RELIABLE BUT NOT GUARANTEED.

