



13-15 Chifley Court, MIDDLE RIDGE, QLD 4350

A Home for All the Family! Room for a Pool & Extra Shed - 1337m2!

A brilliant opportunity to secure your space, peace and quiet in this established corner of Middle Ridge! Now, a comfortable, sizey and well-designed home, suitable for 'dual family' living and also to take further with your own touches to house and garden, awaits you! "JUST" be quick to secure your future, right here!

Proudly featuring:

- Cul-de-sac privacy and position
- Verandah front entry to home and central foyer
- Carpeted formal lounge with plantation shutters to left
- Polished timber floors to spacious family room with plantation shutters to right
- Flow through to open-plan dining room to kitchen space and adjoining covered outdoor entertaining area
- Welcoming kitchen with electric oven, natural gas cooktop, dishwasher, corner pantry and soothing views into the greenery beyond

TYPE: Sold

INTERNET ID: 300P107124

SALE DETAILS

JUST Under Contract

CONTACT DETAILS

**Elders Real Estate
Toowoomba**
202 Hume Street
Toowoomba, QLD
07 4633 6500

Justine Dill
0488025275

- Main bedroom wing to one end, with second bedroom nearby, capturing the north-east light â## the perfect home office?
- Main bedroom with triple built-in robes and plantation shutters
- Sizer ensuite with separate shower, bath and separate toilet
- Separate laundry with generous built-in storage/cupboards and external door
- To other end of home, an almost mirror image bedroom wing â## great for the 'other part' of the family, sharing under one roof!
- Good size third bedroom with built-in robes
- Large fourth bedroom with built-in robes and plantation shutters
- Central sized bathroom and separate toilet
- DUCTED air-conditioning throughout with zone control
- Majority of windows and all doors with Crimsafe security screens
- Newly installed LED downlighting throughout
- Select windows with PLANTATION shutters
- New carpet to lounge and near new to bedrooms
- Polished hardwood timber flooring to most living areas
- NBN connected
- Dux gas hot water system
- Compliant smoke alarms
- Gas heating points to both living areas
- Externally, a fully fenced yard with DOUBLE gate access
- Separate 7m x 7m fully lined brick and tile roofed garage with panel lift door
- Small rainwater tank off garage
- Room for a fantastic pool behind garage, overlooked by the tiled entertaining deck
- Private access gate to adjoining PARK â## great for walks!
- Private and leafy YARD, with room to add those other things - Dad's SHED, the toys or "JUST" enjoy!
- General Rates - \$1814.69 net per half year
- Water Access Charge - \$314.59 net per half year plus usage

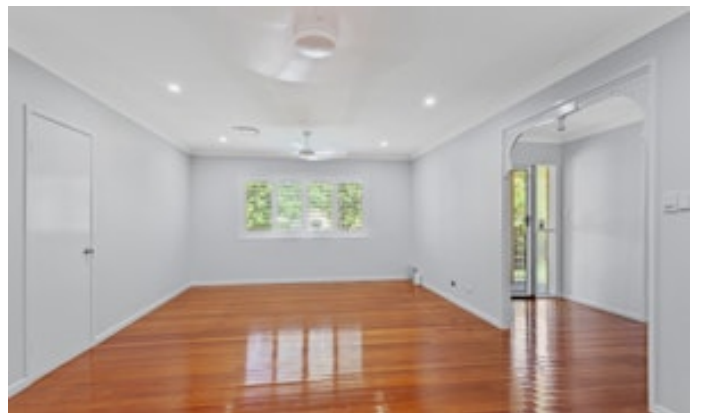
A RARE generous sized LOT with commanding home and garage, offering you space, or options to expand to your family's needs. What a find! Call now or see us at our Open Home

Other features: Carpeted, Close to Schools, Close to Shops, Close to Transport, Heating, Prestige Homes

- Land Area 1,337.00 square metre
- Bedrooms: 4
- Bathrooms: 2

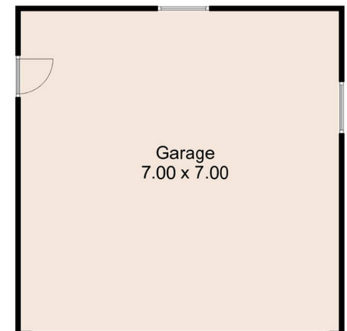
The particulars contained herein are supplied for information only and shall not be taken as a representation in any respect on the part of the vendor or its agent. Interested parties should contact the nominated person or office for full and current details.

- Double garage
- Ensuite
- Floorboards









13 - 15 Chifley Court, Middle Ridge

This floor plan is not to scale. The areas, layout and dimensions are approximate. Therefore the plan should be viewed for illustrative purposes only. Bedrooms are measured from wall to robe.