

68 Ruddick Circuit, STUART PARK, NT 0820

ARCHITECTURALLY DESIGNED MASTERPIECE

Architecturally designed by the renowned Hully Liveris, this stunning executive home boasts five spacious bedrooms, three sleek and modern bathrooms, plus a refreshing swimming pool that will make every day feel like a vacation. Step inside and you'll be greeted by a grand foyer that leads to a spacious living room with soaring ceilings and ample natural light!

Featuring premium finishes throughout, this exquisite property has been designed with every luxury in mind, from the high ceilings and electric privacy blinds to the central gourmet chef's kitchen complete with stone countertops, elegant cabinetry with integrated fridge, and stainless-steel appliances.

Enjoy the multiple entertaining areas, including a large open-plan living and dining space that flows to the beautiful outdoor living space, this home is perfect for entertaining and spending time with loved ones.

The bedrooms are all generous in size and feature built-in robes, while the master suite is a true haven with its own private balcony, walk-in robe, and ensuite.

TYPE: Under Contract

INTERNET ID: 300P108627

SALE DETAILS

UNDER CONTRACT

CONTACT DETAILS

Darwin

70 Smith Street
DARWIN, NT
08 8946 0500

Judy Blore

0408 898 551

Located in the sought-after suburb of Stuart Park, this home is the epitome of comfort and luxury, with every detail designed to make your life easier and more enjoyable. Don't miss out on this incredible opportunity to own a truly remarkable property. Contact me today to arrange a private inspection.

RATES: \$2,600 per annum (approx.)

ZONING: SD20 (Specific Use)

LAND AREA: 452m2

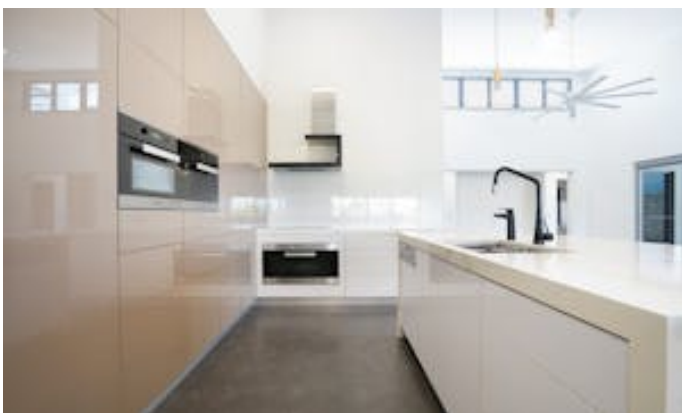
DWELLING AREA: 315m2

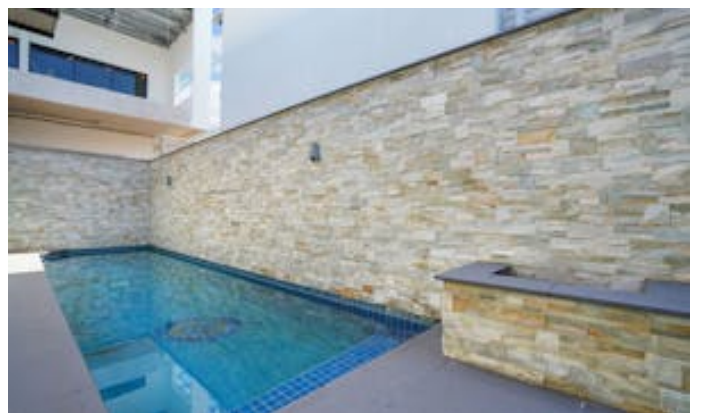
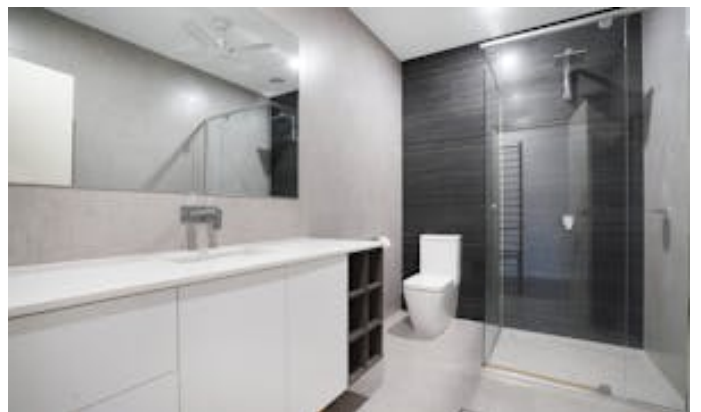
YEAR BUILT: 2014

RENTAL STATUS: \$1,200 per week expiring 30th April 2026

Other features: City Views, Close to Schools, Close to Shops, Close to Transport, Pool

- Land Area 452.00 square metres
- Building Area: 315.00 square metres
- Bedrooms: 5
- Bathrooms: 3
- Car Parks: 3
- Ensuite









GROUND FLOOR



FIRST FLOOR

68 RUDDICK CIRCUIT, STUART PARK

DISCLAIMER
PLANS SHOWN ARE FOR MARKETING PURPOSES ONLY. ALL DIMENSIONS ARE APPROXIMATELY IN METERS AND NOT TO SCALE. THEY ARE SUBJECT TO ERRORS AND INACCURACIES AND NO LIABILITY WILL BE ACCEPTED. INTERESTED PARTIES SHOULD MAKE THEIR OWN INQUIRIES.