



200 Bastin Road, HOWARD SPRINGS, NT 0835

TROPICAL ESCAPE!

Creating a tranquil oasis within tropical surrounds, this beautiful residence delivers effortless laid-back appeal on a near eight acres perfect for buyers looking to escape city life.

Recently renovated, the home feels fresh, stylish and inviting. Showing off two separate living spaces centred around the family kitchen, spilling out naturally onto a covered patio and inground pool, all set within lush established lawns and gardens.

- Spacious ground level home set on approx. eight acres at the end of a quiet cul-de-sac
- Renovated to reveal welcoming, family-friendly spaces with indoor-outdoor appeal
- Light-filled interior accentuated by neutral dÃ©cor and quality tiling throughout
- Separate living room and dining room offer plenty of space for all the family
- Modern kitchen features with gas cooktop, ample pantry storage, bespoke polished cement benchtops and handy island breakfast bar

TYPE: Sold

INTERNET ID: 300P108719

SALE DETAILS

SOLD

CONTACT DETAILS

Palmerston

4/11 Palmerston Cct
Palmerston, NT
08 8931 5000

Judy Blore

0408 898 551

- Master features walk-in robe and ensuite
- Two additional bedrooms serviced by main bathroom with shower, bath & separate WC
- Full air-conditioned comfort provided by split-system air-conditioning
- Fabulous outdoor space enhanced by inground pool and lush tropical surrounds
- Wide, surrounding verandahs & outdoor entertaining area
- Other features include storage sheds, 6 LPS Bore, Solar HWS and 5kW Solar panel system

Offering peace and tranquility on approx eight amazing acres, this must-see property has been recently renovated to provide the very best in rural family living styled to create the perfect escape from hectic city life.

Stepping into the home, you'll quickly notice its easy, welcoming vibe, where a neutral palette teams with quality tiles to offer low maintenance living that will be easy to make your own.

Exploring the living space, you'll find a separate lounge room and a family dining room, where a sleek and stylish kitchen awaits. Bordered by a wall of storage, the kitchen is a joy to spend time in, featuring an oversized gas stovetop and electric oven, gorgeous bespoke polished benchtops and stainless-steel appliances.

From the dining area, the space opens out on two sides to a spacious covered patio and wide wraparound verandah, ideal for relaxing and entertaining with family and friends.

From here, you can see the sparkling pool and an expanse of verdant greenery, where a lush oasis offers peaceful trails for exploring the property. Adding further appeal, the property features a 6 LPS Bore, Solar HWS and 5kW Solar panel system.

While it may feel secluded, the property is just 5-10 minutes' drive from either Howard Springs' schools, shops and amenities or the Coolalinga shopping centre.

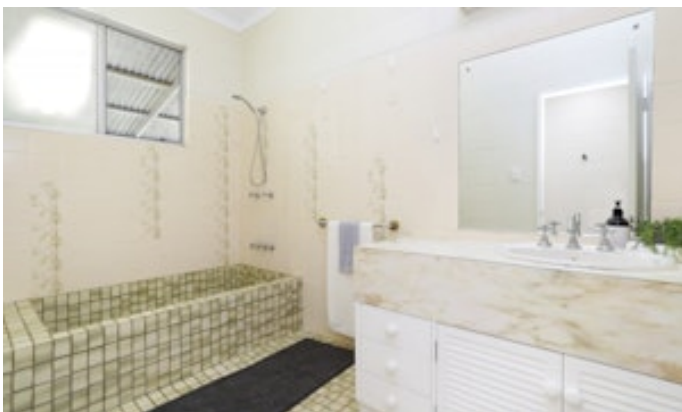
Find your escape within this gorgeous property. Arrange your inspection today!

Other features: Area Views, Bush Retreat, Close to Schools, Close to Shops, Exhaust, Pool, Window Treatments

- Land Area 3.2 hectares
- Building Area: 325.00 square metres
- Bedrooms: 3
- Bathrooms: 2
- Car Parks: 5
- Ensuite











200 BASTIN ROAD, HOWARD SPRINGS

DISCLAIMER: PLANS SHOWN ARE FOR MARKETING PURPOSES ONLY. ALL DIMENSIONS ARE APPROXIMATE AND NOT TO SCALE. THEY ARE SUBJECT TO ERRORS AND INACCURACIES AND NO LIABILITY WILL BE ACCEPTED. INTERESTED PARTIES SHOULD MAKE THEIR OWN INQUIRES.