



13/60 South Western Highway, HARVEY, WA 6220

Seller Will Negotiate

Perfectly located within a small complex, within minutes of central Harvey. All townhouses are occupied due to a strong rental market and location within the very popular community town of Harvey. Thoughtfully designed with bedrooms upstairs and living downstairs with a low maintenance outdoor area.

An affordable opportunity for a first home buyer, downsizer or for the discerning investor

Property Features:

Brick two storey townhouse

Two bedrooms, 1 bathroom, 2 toilets

Single carport

Good sized lounge room

Kitchen with plenty of cupboard space, gas cooktop

TYPE: Sold
INTERNET ID: 300P108848
SALE DETAILS
Offers Over \$265,000

CONTACT DETAILS
Bunbury
 11 Stirling Street
 Bunbury, WA
Anthony (skip) Schirripa
 0417 292 923

The particulars contained herein are supplied for information only and shall not be taken as a representation in any respect on the part of the vendor or its agent. Interested parties should contact the nominated person or office for full and current details.

Dining room off the kitchen

Bedroom 1 (3.3 x 4.0m) with double robes

Split air conditioner in the bedroom 1

Modern bathroom with shower, toilet, vanity

Balcony off the master bedroom

Bedroom 2 (3.4 x 3.1m approx.)

Ceiling fan in bedroom 2

Storage under the stairs

Internal laundry with cupboards

Second toilet off the laundry

Rented @ \$300 pw, periodically leased

Patio entertaining area

Good size backyard with side access

Modern colourbond fencing

Built 1980

Gas bottles

Strata \$687.5 pq

Water rates \$1420 pa

Shire rates \$1920 pa

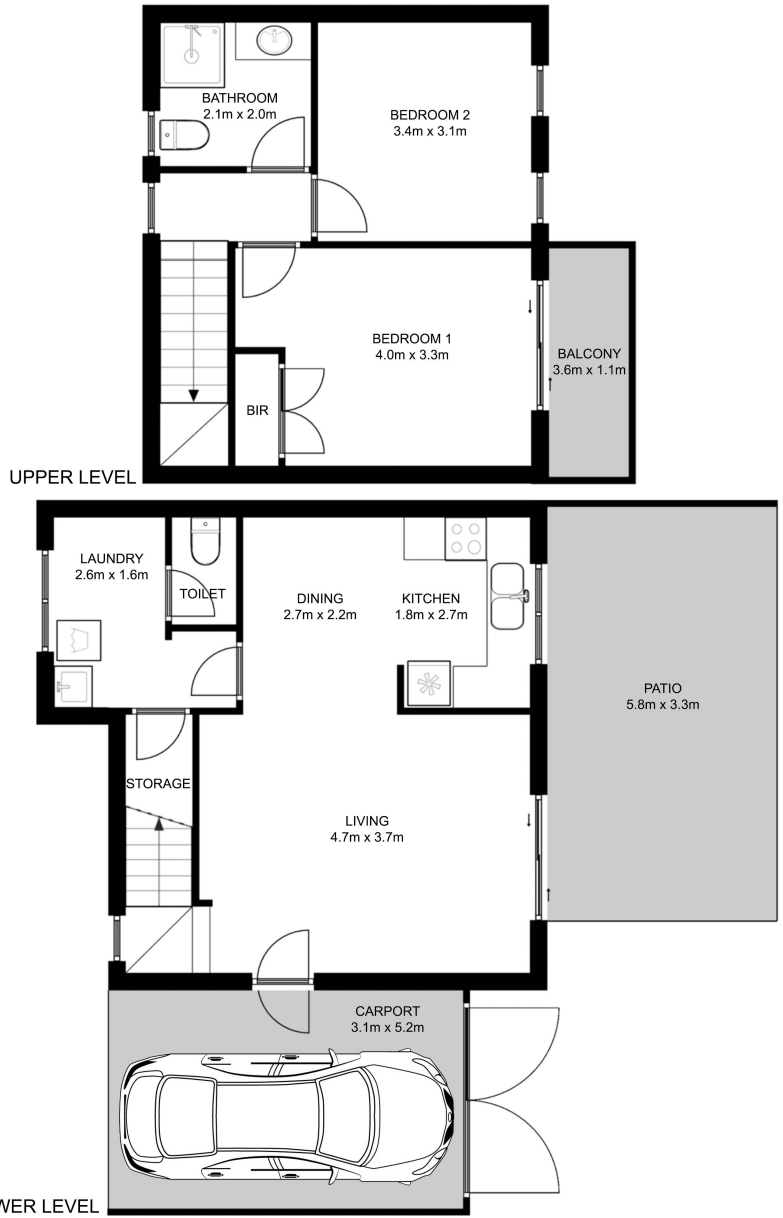
Low maintenance for an easy lifestyle

- Bedrooms: 2
- Bathrooms: 1
- Single carport





13 / 60 South Western Highway, Harvey



This floor plan including furniture, fixture measurements and dimensions are approximate and for illustrative purposes only. Marques Photography gives no guarantee, warranty or representation as to the accuracy and layout. All enquiries must be directed to the agent, vendor or party representing this floor plan.