



25 Matheson Road, MILLICENT, SA 5280

Tranquility & Serenity on Matheson

Welcome to 25 Matheson Road

Located on a gorgeous tree lined street and nestled back off this large allotment provides a very private and peaceful lifestyle for this beautiful solid character blue stone & red brick home with cedar timber features.

Entering the home through the front leadlight door, you will be taken back by the feel of the heritage style era as you enter the double timber doors to the spacious formal lounge room. With stunning ceiling roses, vast stone mantelpiece fireplace and the original carpet that flows through to the entrance and the master bedroom, takes you back in time.

The hub of the home is the spacious open plan dining and kitchen area with slate flooring and high timber ceilings. Designed to cook and entertain, with a large square island bench with cupboards on both sides that flows on through to a high kitchen bench. The kitchen presents timber cabinetry, walk-in pantry, large skylight, and stainless-steel appliances include an electric wall oven with separate grill and dishwasher. The family room is quaint and has a warm relaxed feeling with carpet flooring, ceiling fan and a wood fire.

TYPE: Sold

INTERNET ID: 300P108859

SALE DETAILS

\$820,000 - \$849,000

CONTACT DETAILS

Millicent

Cnr Glen St and Railway
Tce
Millicent, SA
08 8735 5800
RLA: 62833

Kerry Smith
0419 803 836

The home has the luxury of ducted reverse cycle air-conditioning which covers the formal lounge, dining, kitchen, and family area.

There are 3 bedrooms, the master bedroom is located at the front of the home and features a beautifully detailed art nouveau style framed fretwork with a sitting area, built-in robes and ensuite -containing a shower, vanity, and toilet. Bedrooms 2 and 3 are of generous size and both feature built-in wardrobes and just down the hallway from the main bathroom.

The main bathroom is very spacious with a vanity area, shower tucked away in an alcove and a large deep spa bath.

A decent size office/study has a built-in seat lounge and office desk but could be converted to a small 4th bedroom if needed.

A great entertaining that leads from the dining area, this impressive pergola is at the rear is perfect spot to kick back with family & friends and enjoy a BBQ and a beverage, even in the winter months with a built-in wood fire.

The home sits on approximately 1.011ha and with all the improvements on one side of the allotment and a second driveway off the other side creates potential to subdivide a portion of the block off (STCA).

Water consists of bore that is supplied to the garden and 2 massive concrete tanks supply rainwater to the home.

Car parking and shedding is impressive with a double carport to the side of the home and adjacent 2 bay colorbond garage behind and further down in the block is a 3 bay colorbond shed with 2 roller doors with concreted flooring and power.

This beautiful property has a magnificent established garden and with abundance of trees requires some tender loving care and is perfect for the garden lover to bring it back to life.

You will love the peace, quiet and privacy that 25 Matheson offers, all whilst living within proximity to all the conveniences that Millicent has on offers.

A home you have been waiting for, call Kerry today to schedule a viewing and experience the serenity and character this property has.

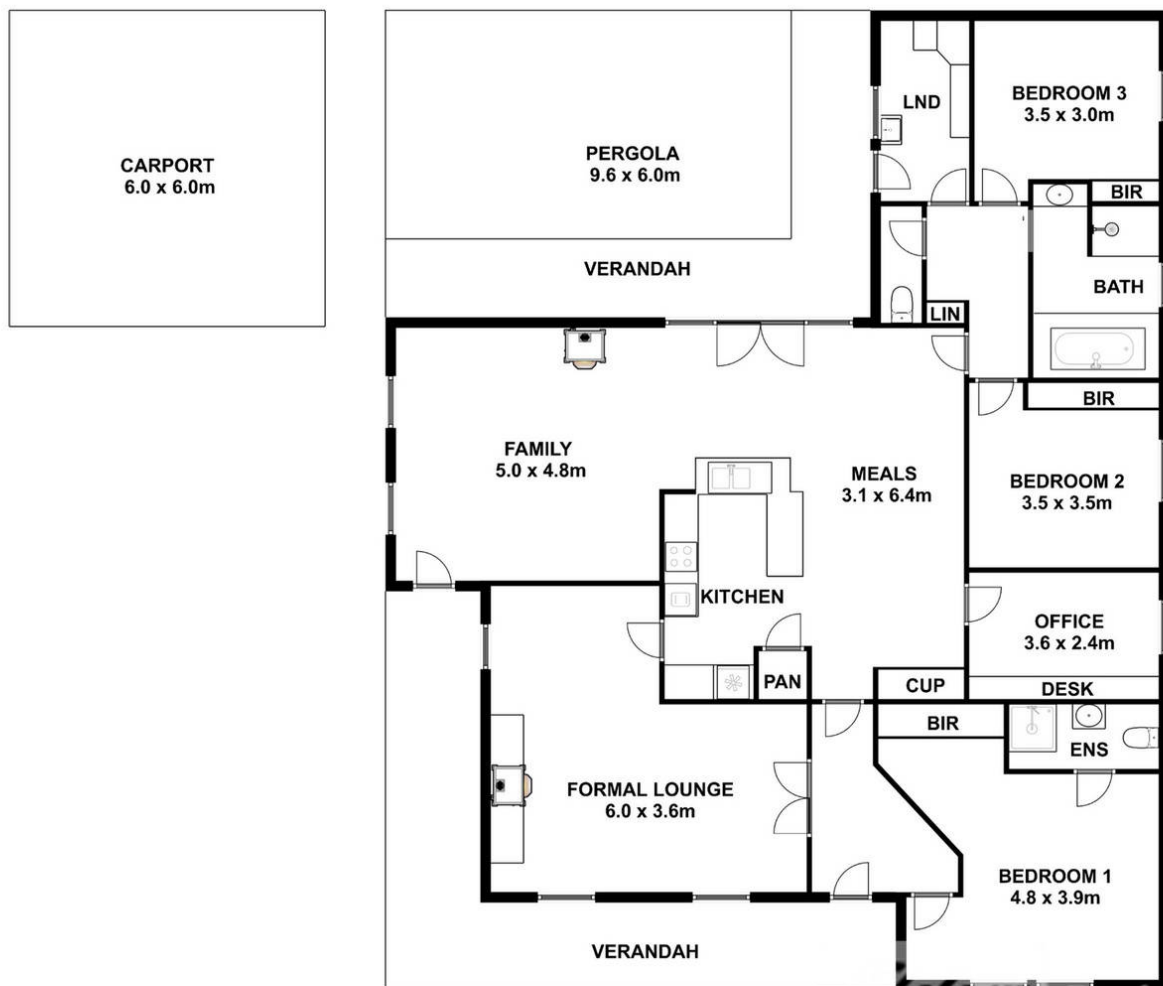
- Land Area 1.011 hectares
- Bedrooms: 3
- Bathrooms: 2
- 4 car garage
- Double carport
- Ensuite











This drawing is for illustration purpose only. All measurements are approximate only and information intended to be relied upon should be independently verified.