



3 Peake Terrace, COONALPYN, SA 5265

Country Living

- 3 bedroom stone home with extension on spacious 1644sqm allotment and views of silo art
- Kitchen/dining with gas cooktop & electric oven
- Lounge/dining with slow combustion heater & split system air cond
- Upgraded bathroom plus 2nd toilet off spacious laundry
- New roof & bull nose verandah, 3.5 KW Solar system, NBN Connected
- Double garage/workshop with power, shade cloth carport, paved pergola

Disclaimer: We have in preparing this information used our best endeavours to ensure that the information contained herein is true and accurate but accept no responsibility and disclaim all liability in respect of any errors, omissions, inaccuracies, or misstatements that may occur. Prospective purchasers should make their own enquiries to verify the information contained herein. Elders Real Estate RLA62833

- Bedrooms: 3

TYPE: Sold

INTERNET ID: 300P109414

SALE DETAILS

\$220,000

CONTACT DETAILS

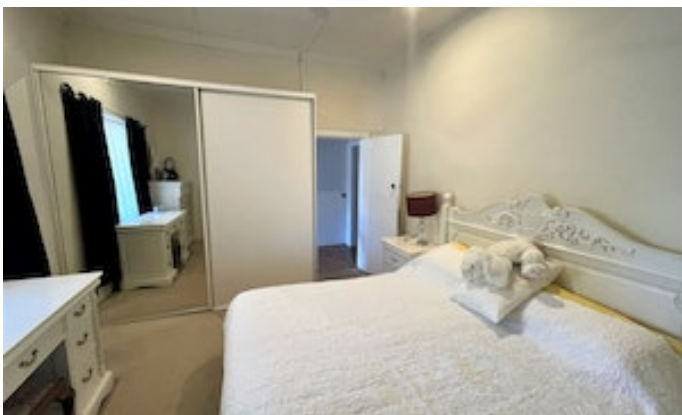
Murray Bridge

93 Railway Terrace
TAILEM BEND, SA
08 8572 8006
RLA: 62833

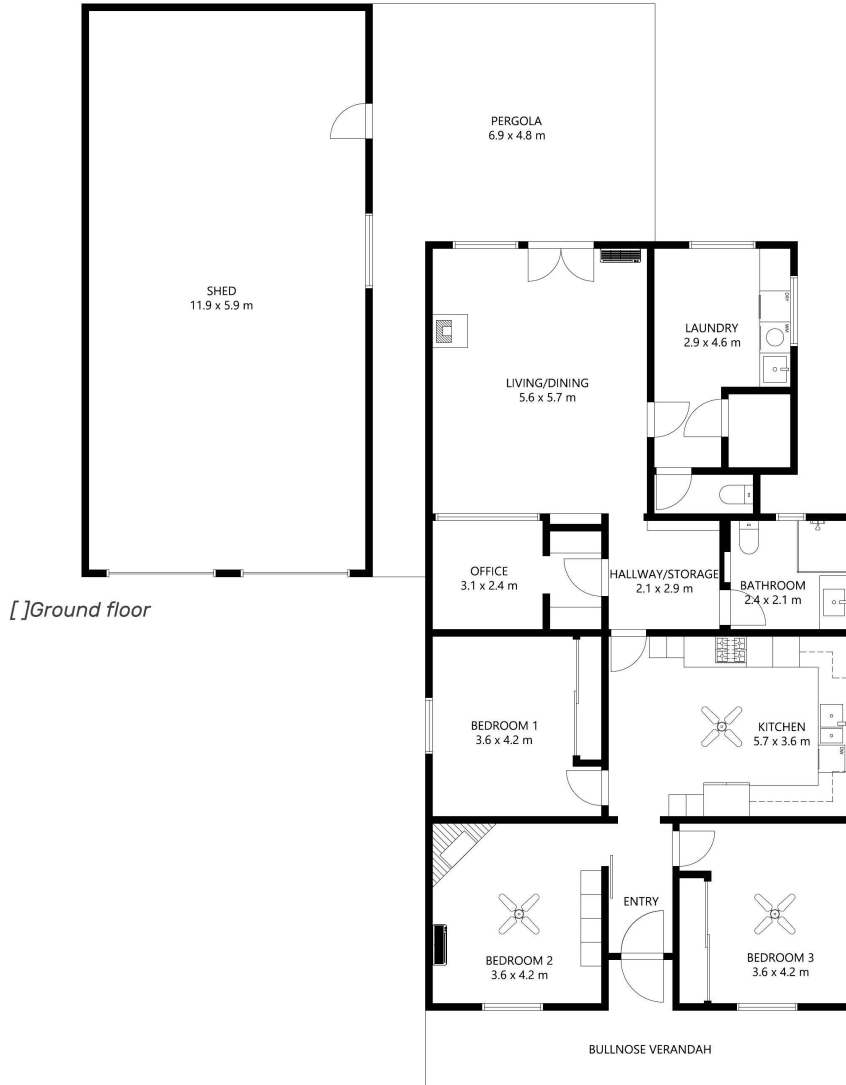
John Robinson

0409 609 457

- Bathrooms: 1







3 Peake Terrace Coonalpyn

Real Estate

Floor plan is provided as indicative layout only. Measurements are not available, floor plan is not to scale. No guarantees provided on accuracy. Exterior elements are not in position.

