



24 Churchill Road, VICTOR HARBOR, SA 5211

Character Town Centre – Fall in the Love with "The White House"

BUYERS NOTE NEW BEST OFFERS BY DATE,

BROUGHT FORWARD TO 1/5/23 1pm (USP) ##

PRICE GUIDE \$495,000 to \$525,000

This one owner home has been lovingly maintained since it was built in the 1950's.

The time has now come for a gardener, couple or family to enjoy as is or renovate and live like a President in "The White House".

Given it's a large lot of some 864sqm a developer/investor may wish to redevelop sooner or later. Zoning is Housing Diversity Neighbourhood (Z2404) ## HDN, this zoning's minimum site areas are as follows; detached dwelling is 300 sqm, semi-detached dwelling is 220 sqm & group dwelling is 275 sqm. Any redevelopment of the property is subject to all necessary consents.

TYPE: Sold

INTERNET ID: 300P109584

SALE DETAILS

PRICE GUIDE
\$495,000 to \$525,000

CONTACT DETAILS

Elders Victor Harbor
11-13 Victoria Street
VICTOR HARBOR, SA
08 8555 9000
RLA: 62833

Paul Smith
0417 624 833

Back to the home with its high ceilings, gorgeous glass windows and many other features including;

- Two double bedrooms both with robes and large windows to admire the gardens
- Original bathroom with deep character bath, shower alcove, vanity and w.c plus a handy second w.c off the laundry.
- Well sized laundry with built-in cupboards and room for second fridge/ freezer if desired.
- Original eat-in kitchen with a pretty garden view through the feature corner windows.
- Spacious lounge with ornate ceiling and gas fire positioned in front of the original fireplace
- Large family room addition accessed just off the lounge with sliding door to the back garden
- Drive through carport to workshed with concrete floor & power
- Other features include NBN connection, ducted reverse cycle air-conditioning, rainwater tank plumbed to laundry & kitchen
- Stunning cottage gardens with watering system and lawns plus two bird aviaries

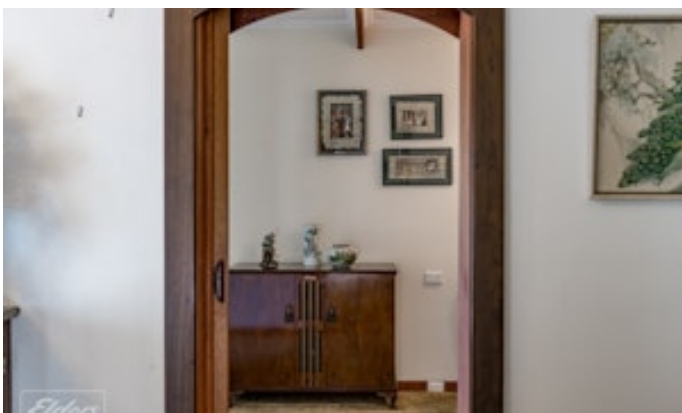
This home would respond well to a renovation for today's living whilst still retaining the classic features of the 1950's.

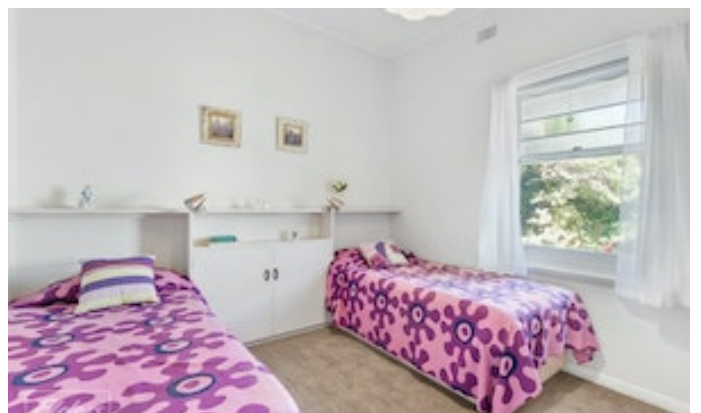
Homes on the flat in central Victor remain well sort after. Don't delay and call me today for more details or to arrange a private inspection.

Disclaimer: We have in preparing this information used our best endeavors to ensure that the information contained herein is true and accurate, but accept no responsibility and disclaim all liability in respect of any errors, omissions, inaccuracies or misstatements that may occur. Prospective purchasers should make their own enquiries to verify the information contained herein. RLA 62833

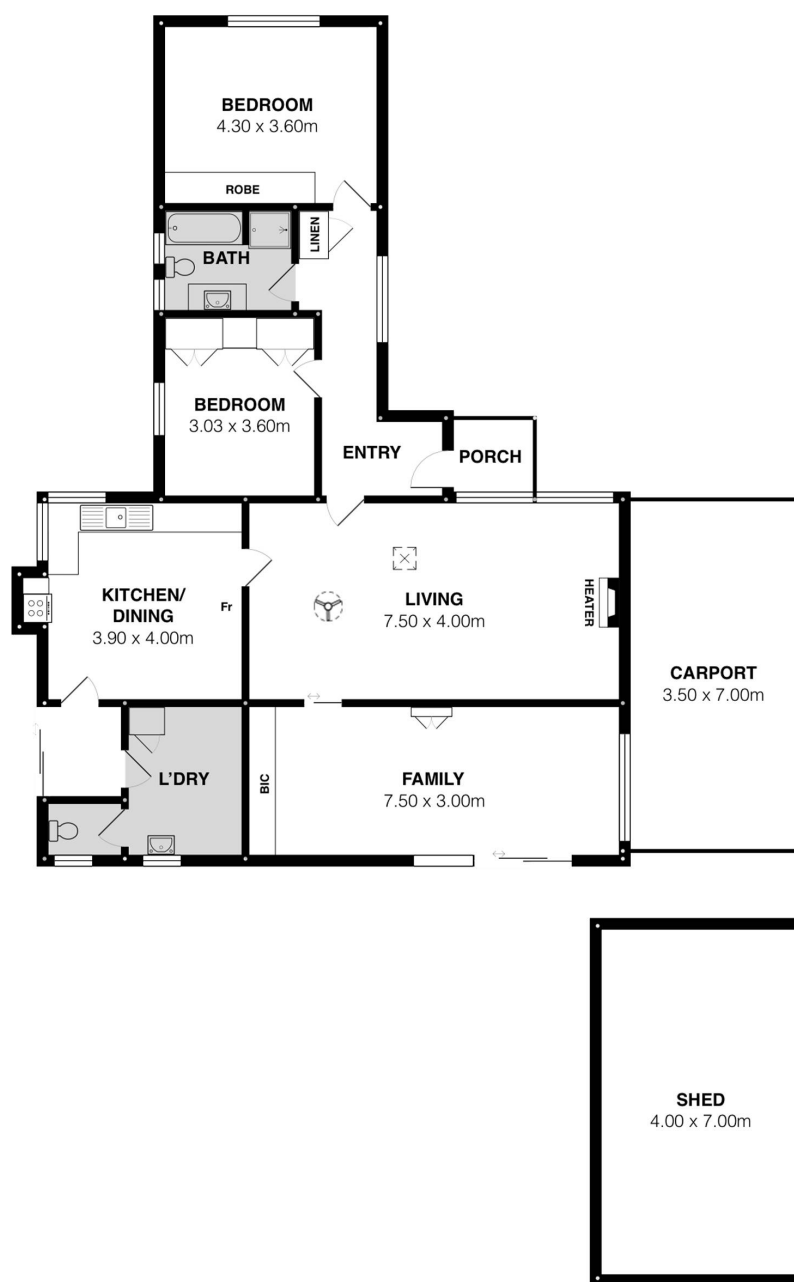
Other features: Close to Schools, Close to Shops, Close to Transport, Security System, Window Treatments

- Land Area 864.00 square metres
- Bedrooms: 2
- Bathrooms: 1
- Single garage
- Single carport









Scale in metres. This drawing is for illustration purposes only. All measurements are approximate and details intended to be relied upon should be independently verified.

Elders

