

3 Margaret Street, EDENHOPE, VIC 3318

Affordable Entry-Level Home with Potential

Larger than it looks, this 3-bedroom, 1-bathroom timber-framed home is located in a quiet area of Edenhope.

Built in 1960 and set on an easy-care 590m² allotment, the home requires some work but offers excellent potential for the right buyer - whether an investor or an owner-occupier.

All three bedrooms feature good-quality carpet, while the layout includes two separate living areas, a bathroom with walk-in shower, and a generous kitchen/meals space complete with a large walk-in pantry or storage room.

Vehicle accommodation is provided via an undercover carport, complemented by a long shed offering additional storage or workshop space.

Homes in this price range are tightly held - an ideal opportunity to step out of the rental market and into home ownership with this affordable starter property.

TYPE: For Sale

INTERNET ID: 300P109692

SALE DETAILS

\$237,000

CONTACT DETAILS

Naracoorte

Shop 5/26 Robertson Street

Naracoorte, SA

08 8762 7900

RLA: 62833

Lee Curnow

0427 620 864

The property is vacant and ready for a new owner to move in. Start the journey towards making it yours by booking an inspection with Lee on 0427 620 864.

Council: West Wimmera Shire

Council Rates: \$1,036.10 per annum

CT: 9157/491

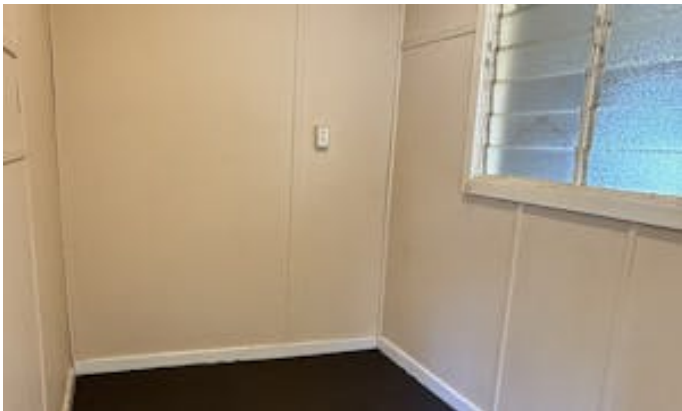
Land Size: Approx. 590m²

Zoning: Township

Disclaimer: We have in preparing this information used our best endeavours to ensure that the information contained herein is true and accurate, but accept no responsibility and disclaim all liability in respect of any errors, omissions, inaccuracies or misstatements that may occur. Prospective purchasers should make their own enquiries to verify the information contained herein. RLA62833

Other features: Car Parking - Surface, Carpeted, Close to Shops, Heating, Openable Windows, Pay TV Access

- Land Area 590.00 square metres
- Bedrooms: 3
- Bathrooms: 1
- Single garage
- Single carport







THIS FLOOR PLAN IS FOR ILLUSTRATION PURPOSES ONLY