



## 21 Rooney Street, ROSEBERY, NT 0832

### SURE TO IMPRESS!

Presenting effortless family living within well-presented layout, this three-bedroom home can't help but appeal, as it shows off a light-filled open-plan living space, complemented by a modern kitchen and two bathrooms. Set on a neat block framed by established, low maintenance gardens, the home also appeals on location, situated next to a park with a playground, within ever-desirable Rosebery.

- ï#- Tidy ground level home set on quiet street in sought-after suburb
- ï#- Fully tiled and air-conditioned for fresh, easy family living
- ï#- Breezy open-plan living area creates plenty of space for family lounging and dining
- ï#- Covered verandah overlooks fully fenced grassy yard with garden shed
- ï#- Modern kitchen with gas stovetop, plentiful storage and handy breakfast bar dining
- ï#- Spacious master features large walk-in robe and ensuite
- ï#- Two additional bedrooms, each with built-in robes
- ï#- Central bathroom features bathtub, vanity and separate shower alcove.

The particulars contained herein are supplied for information only and shall not be taken as a representation in any respect on the part of the vendor or its agent. Interested parties should contact the nominated person or office for full and current details.

**TYPE:** Sold

**INTERNET ID:** 300P109838

**SALE DETAILS**

**SOLD**

**CONTACT DETAILS**

**Palmerston**

4/11 Palmerston Cct  
Palmerston, NT  
08 8931 5000

**Gennie Cox**

0411 151 911

• Laundry offers sliding door access to yard

• Double covered carport with additional off-street parking on driveway

Neatly presented throughout, this attractive family home creates a wonderful opportunity for homeowners and investors looking to buy within this highly sought-after setting.

Stepping into the fully air-conditioned home, you are greeted by a light-filled open-plan living area, beautifully accented by neutral décor and crisp white tiles, which flow effortlessly throughout the interior.

Creating a flexi layout for relaxing and dining, this space is overlooked by a stylish kitchen, featuring modern stainless-steel appliances, gas cooking, and ample storage including a pantry.

Moving on to explore the sleep space, this consists of an open, airy master with large walk-in robe and ensuite, and two further bedrooms centred around a family bathroom with bath and separate shower.

Noting the laundry with handy yard access, head outside via the living area to take in the covered verandah, which works seamlessly to extend the living space.

Perfect for family BBQs and entertaining friends, the verandah looks out over a generous backyard complemented by leafy, established landscaping, complete with sizeable garden shed.

Completing the property is a double covered carport at the front of the home.

With public transport close at hand, the home is a short walk to Rosebery shops, featuring an Indian restaurant, medical centre and convenience store, with well regarded Rosebery primary and middle schools just beyond. Centrally located within minutes to nearby shopping centre, schools, parklands & Palmerston CBD

Act fast to snap up this excellent opportunity! Arrange your inspection today.

Other features: Area Views, Close to Schools, Close to Shops, Close to Transport, Exhaust, Openable Windows

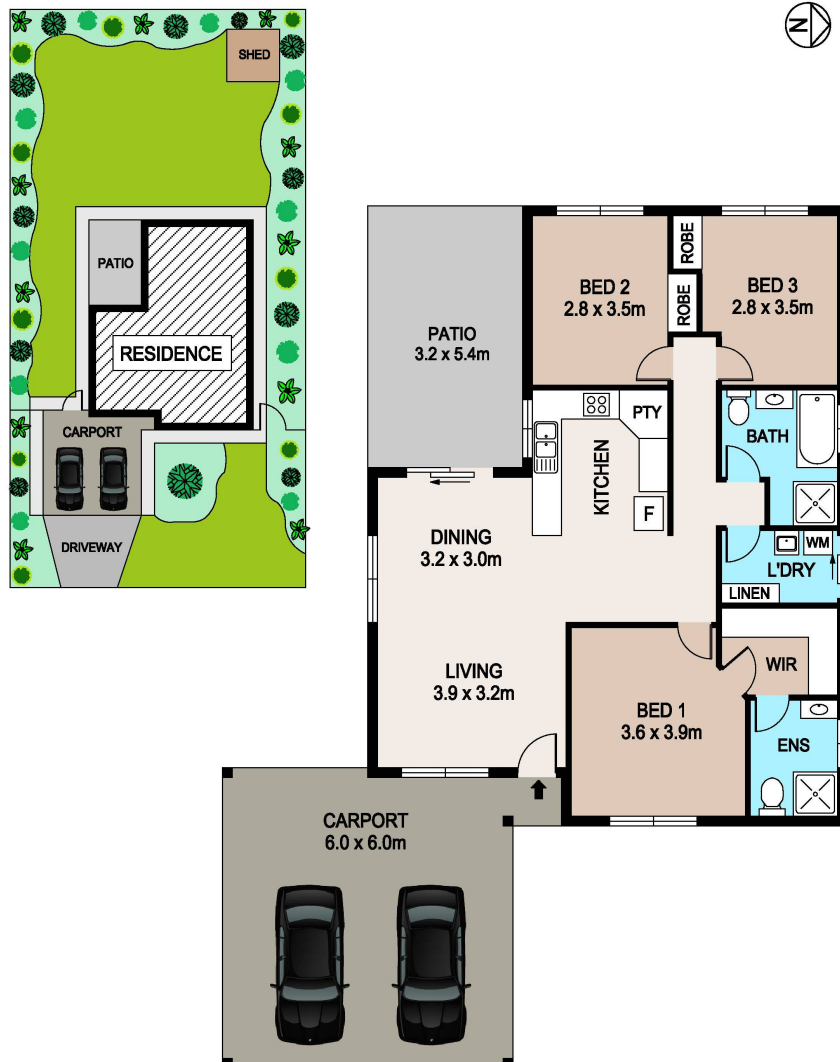
- Land Area 619.00 square metres
- Building Area: 152.00 square metres
- Bedrooms: 3
- Bathrooms: 2
- Double carport
- Ensuite











## 21 ROONEY ST, ROSEBERY

### DISCLAIMER

PLANS SHOWN ARE FOR MARKETING PURPOSES ONLY. ALL DIMENSIONS ARE APPROXIMATE AND NOT TO SCALE. THEY ARE SUBJECT TO ERRORS AND INACCURACIES AND NO LIABILITY WILL BE ACCEPTED. INTERESTED PARTIES SHOULD MAKE THEIR OWN INQUIRES.