

27 Port Mar Street, MOULDEN, NT 0830

FANTASTIC FAMILY HOME!

Delivering modern family living on a generous block, this elevated three-bedroom home is set in a quiet pocket of Moulden, close to the local primary school, shops and parks. Light and bright within, the home offers a spacious, well-planned layout, featuring open-plan living leading to a tidy kitchen and pretty balcony, which looks out over the large low maintenance yard and sparkling inground pool.

- ï#- Elevated family home set on generous parcel in quiet, peaceful setting
- ï#- Fully air-conditioned interior enhanced by neutral tones and attractive flooring
- ï#- Bright, open living area creates plenty of space for all the family
- ï#- Neat kitchen features electric cooking and plentiful storage
- ï#- Master offers built-in robe, ensuite with shower and sliding door access to balcony
- ï#- Two additional bedrooms, each with built-in robe
- ï#- Main bathroom features contemporary style, with shower-over-bath
- ï#- Outdoor space made up of elevated balcony and undercover entertaining area

The particulars contained herein are supplied for information only and shall not be taken as a representation in any respect on the part of the vendor or its agent. Interested parties should contact the nominated person or office for full and current details.

TYPE: Sold

INTERNET ID: 300P110260

SALE DETAILS

SOLD

CONTACT DETAILS

Palmerston

4/11 Palmerston Cct
Palmerston, NT
08 8931 5000

Gennie Cox

0411 151 911

• Excellent yard framed by established lawns and gardens, complete with inground pool

• External laundry on ground level; double covered carport; fenced and gated block

Attractive and spacious, this appealing residence offers easy indoor-outdoor living, situated on a quiet street within a fully fenced and gated block.

Stepping into the open-plan living area, you immediately notice how light and bright it feels, as neutral décor and abundant natural light work together to enhance this effortless, flexible space.

Taking note of the tidy, spacious kitchen, step through to the sleep space, where you find a light and airy master, complete with plush carpet, built-in robe, ensuite and sliding door access to the balcony.

Two further robed and carpeted bedrooms are located nearby, which are serviced by a contemporary family bathroom.

Moving out onto the balcony, take the external stairs back to ground level, where the covered alfresco creates a wonderful space for outdoor entertaining, looking out over the pool and leafy, low maintenance yard.

An external laundry and double carport also feature on this level, adding further appeal to this already appealing property.

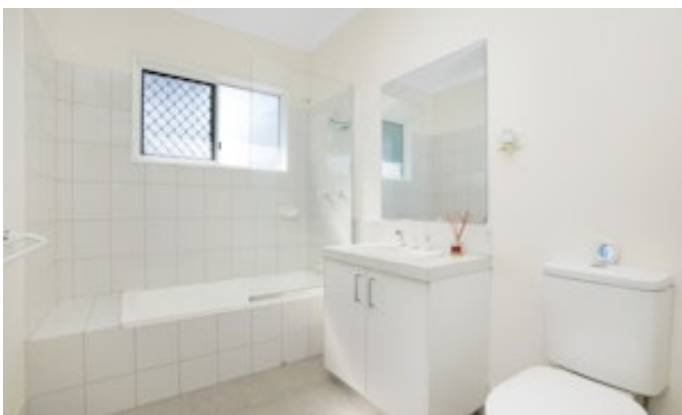
A short walk from the local school and childcare facilities, the property also provides easy access to nearby parklands, shops and sportsgrounds, while Palmerston CBD is just minutes away by car.

Avoid missing out on this excellent opportunity – add this property to your shortlist and arrange your inspection today.

Other features: Close to Schools, Close to Shops, Close to Transport, Exhaust, Openable Windows, Pool

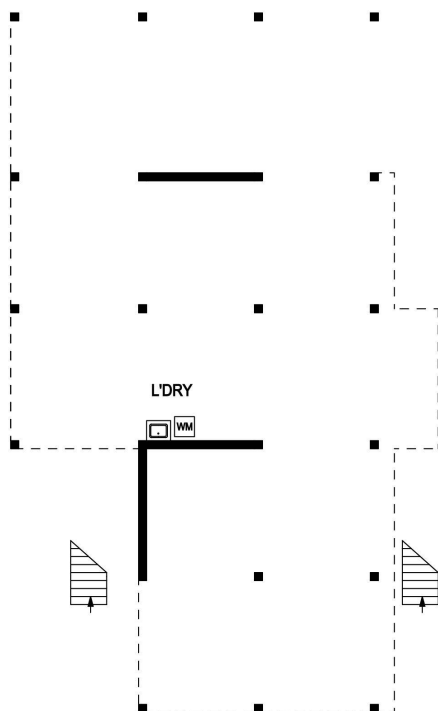
- Land Area 802.00 square metres
- Building Area: 100.00 square metres
- Bedrooms: 3
- Bathrooms: 2
- Double carport
- Ensuite



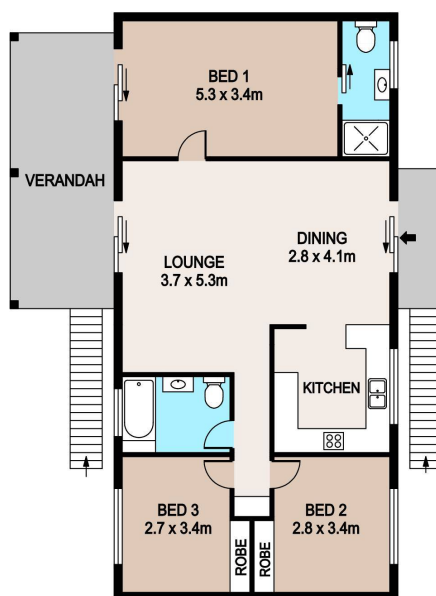




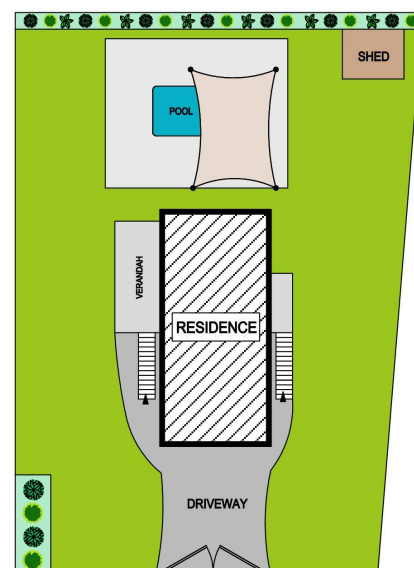




GROUND FLOOR



UPPER FLOOR



SITE PLAN

27 PORT MAR ST, MOULDEN

DISCLAIMER

PLANS SHOWN ARE FOR MARKETING PURPOSES ONLY, ALL DIMENSIONS ARE APPROXIMATE AND NOT TO SCALE. THEY ARE SUBJECT TO ERRORS AND INACCURACIES AND NO LIABILITY WILL BE ACCEPTED. INTERESTED PARTIES SHOULD MAKE THEIR OWN INQUIRES.