



18 Halpin Street, MALAK, NT 0812

WHAT A PRICE!

Located in the family friendly suburb of Malak, this well-maintained ground level home is set upon a generous 830m2 securely fenced land allotment with wrap around green lawns and established gardens. This sweet and neat family home has been well maintained and offers a wonderful opportunity to secure your first home in the Darwin market or the perfect rental investment property.

What we love about this home:

- Open floor plan design with practical and functional kitchen with dishwasher, standalone oven, plentiful cupboard space and overhead storage
- Three great sized bedrooms with the main bedroom located at the end of the hallway which is double in size and dual timber slat doors to the other bedrooms
- Tiled main bathroom featuring a shower, bath and mirrored vanity
- Split and RAC air-conditioning, security screens throughout and low maintenance ceramic tiling
- Generous 830m2 land allotment with sprawling green lawns surrounds the home with

The particulars contained herein are supplied for information only and shall not be taken as a representation in any respect on the part of the vendor or its agent. Interested parties should contact the nominated person or office for full and current details.

TYPE: Sold

INTERNET ID: 300P127800

SALE DETAILS

SOLD

CONTACT DETAILS

leanyer

Shop 13B Hibiscus
Shopping Town 8 Leanyer
Drive Leanyer
DARWIN, NT
08 8995 7500

Derek Hart

0409 702 631

secure fencing giving you ample room for additions or extensions

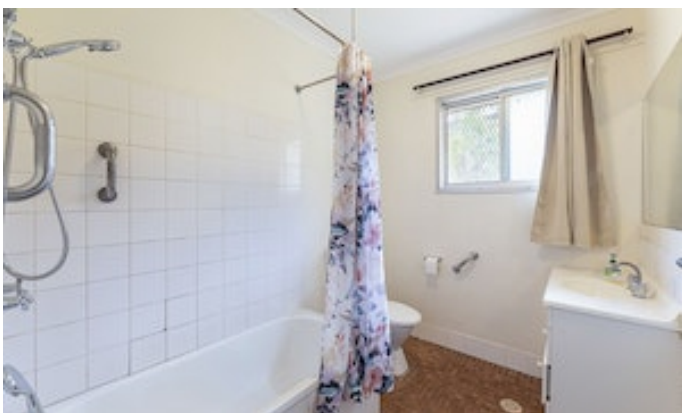
- Large internal laundry with convenient direct access to the rear backyard

This well-built home provides ample room to move and grow, to renovate and upgrade to suit your needs. Wit Large greenhousein close proximity to local schools and shopping centres and with a multitude of amenities this home is one to consider.

Organise your inspection today!

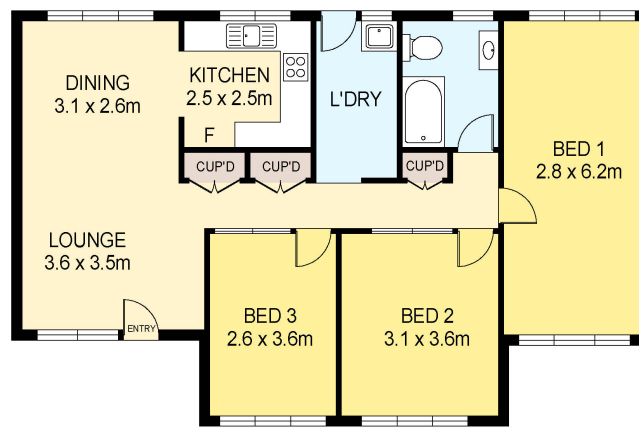
Other features: Close to Schools, Close to Shops, Close to Transport

- Land Area 830.00 square metres
- Bedrooms: 3
- Bathrooms: 1
- Car Parks: 2









Scale in metres. Indicative only. Dimensions are approximate. All information contained herein is gathered from sources we believe to be reliable. However we cannot guarantee its accuracy and interested persons should rely on their own enquiries

18 Halpin Street, Malak