



25 Maurice Terrace, BAKEWELL, NT 0832

3 BED, 2 BATH HOME WITH BIG SHED!

Designed with the family in mind, this solidly constructed three bedroom brick home ticks all the boxes. Set back from the street with a screen of tropical gardens and a fenced in front yard for the kids and pets to explore, this home has gated entry with vehicle parking for at least 3 out the front or down the side. Furthermore at the rear of the property is a workshop shed with dual parking bays perfect for the hobby car, trailer, boat or tradie tools.

Front and back verandahs offer a cool space to hang outdoors with the family and play with the dog. Within the back yard there is a shade house set up ideal for the green thumb and plenty of easy care tropical gardens as well as large open lawns.

Inside the home is tiled throughout with easy care design and A/C. The kitchen offers wrap around counters with plenty of prep areas to work from along with overhead storage space and views over the backyard. Open plan living and dining areas create a great flow for the family dynamics.

The master bedroom suite includes a built in robe and a private ensuite bathroom while bedrooms 2 and 3 both have louvered windows and A/C. The main bathroom hosts a bath tub and shower with a vanity that has storage space and across the hall is the

The particulars contained herein are supplied for information only and shall not be taken as a representation in any respect on the part of the vendor or its agent. Interested parties should contact the nominated person or office for full and current details.

TYPE: Sold

INTERNET ID: 300P131335

SALE DETAILS

SOLD

CONTACT DETAILS

Palmerston

4/11 Palmerston Cct
Palmerston, NT
08 8931 5000

Rayna Kirikino

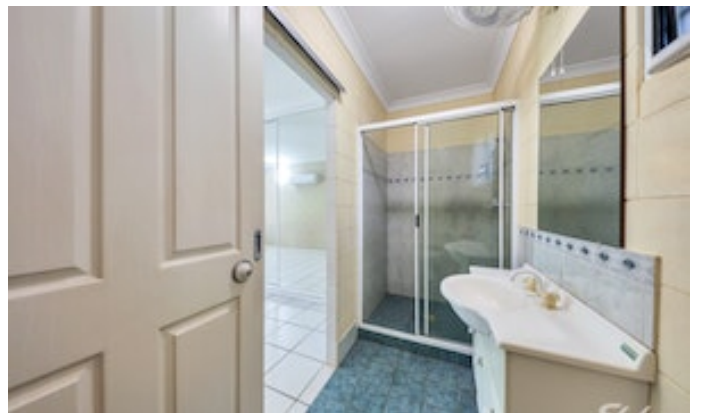
0400 456 484

laundry room with linen press and a door through to the back verandah and yard space.

Walk to Bakewell Primary School, or take the bike to the local park and Gunn Lakes to watch for turtles and ducks. Up the road is Woollies and other retailers with a GP clinic and more, the home is only 5 minutes from the heart of the CBD with markets throughout the dry season. This immaculate home is move in ready ideal for a family, first home buyers and investors alike.

Other features: Close to Schools, Close to Shops, Close to Transport

- Land Area 776.00 square metres
- Building Area: 195.00 square metres
- Bedrooms: 3
- Bathrooms: 2
- Double garage









Scale in metres. Indicative only. Dimensions are approximate. All information contained herein is gathered from sources we believe to be reliable. However we cannot guarantee its accuracy and interested persons should rely on their own enquiries

25 MAURICE TERRACE, BAKEWELL