



## 29 Sandringham Road, BALDIVIS, WA 6171

**SOLD BY TONY ANSARA**

Modern and Extremely Low Maintenance 4x2 in the Popular Baldivis Grove Estate!

You're sure to be impressed when you come to view this beautifully presented and well-maintained property that offers a quality, low maintenance lifestyle and is perfect for first home buyers, downsizers and investors alike.

Featuring 4 generously sized bedrooms, 2 stylish bathrooms, study area, kitchen with quality fixtures and fittings, large open plan living area, separate theatre room and alfresco dining.

Additional features include solar panels for energy savings, ducted reverse cycle air-conditioning for temperature control, security cameras, low maintenance gardens and double car garage with rear access and shopper's entry.

This property is definitely one to put on your shortlist!

Located in a great family friendly location and is within a short distance to beautiful

The particulars contained herein are supplied for information only and shall not be taken as a representation in any respect on the part of the vendor or its agent. Interested parties should contact the nominated person or office for full and current details.

**TYPE:** Sold

**INTERNET ID:** 300P131350

**SALE DETAILS**

**Offers From Mid \$500's**

**CONTACT DETAILS**

**Elders Real Estate  
Rockingham & Baldivis**

8/2-6 Council Ave  
Rockingham, WA  
08 9591 4999

**Tony Ansara**  
0410 107 787

parklands, schools, transport routes, shopping facilities and local amenities.

Call Tony Ansara any time for further details or to organise a private viewing on 0410 107 787. Facetime for video viewings is also available.

#### Property Features

Year built 2016

Lot size 375m2\*

Study area

4 Bedrooms (Master bedroom with a bay window, plantation shutters, walk-in robe and ensuite, Minor bedrooms with double sliding mirrored robes)

2 Bathrooms

Kitchen with quality fixtures and fittings and ample storage

Spacious open plan living area

Theatre room

Laundry with linen closet

Alfresco dining

Low maintenance lawns and gardens

Ducted reverse cycle air-conditioning

Solar panels

Front security screen door

Security cameras

Double car garage with rear access and a shopper's entry

#### Location Features

Zedora Reserve 400m\*

Nearest bus stop (Arpenteur Drive After Huxtable Tce) 1km\*

Stockland Baldivis Shopping Centre 2.6km\*

Baldivis Square 3.6km\*

Kwinana Freeway Entrance 3.9km\*

Warnbro Train Station 4.4km\*

Perth 48.4km\*

#### Schools

Settlers Primary School 1.7km\*

Makybe Rise Primary School 3.7km\*

Sheoak Grove Primary School 4.3km\*

Tuart Rise Primary School 4.2km\*

Ridge View Secondary College 6.1km\*

Baldivis Secondary College 4.3km\*

Tranby College 1.8km\*

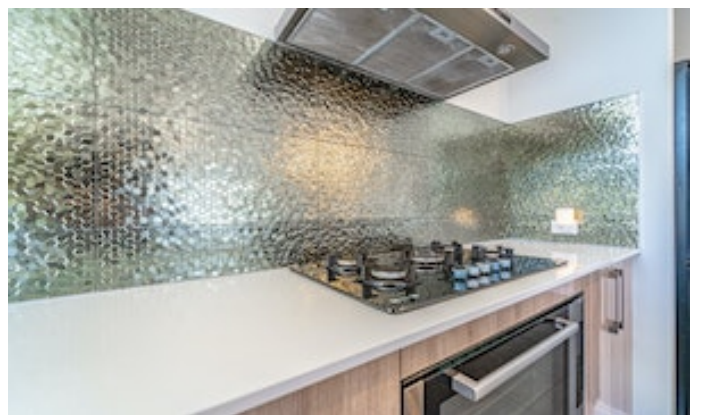
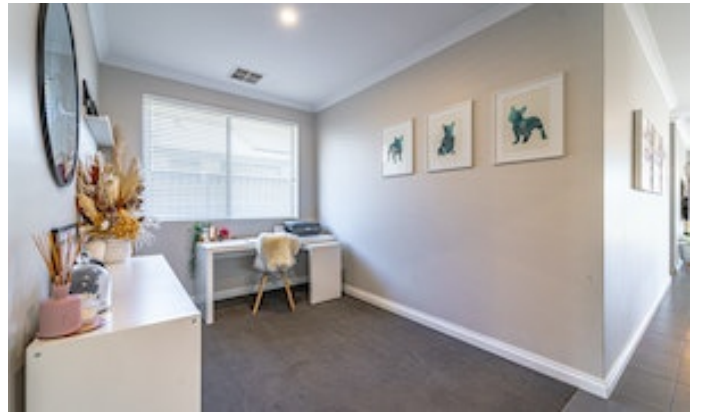
Mother Teresa Catholic College 3.6km\*

The information provided including photography is for general information purposes only and may be subject to change. No warranty or representation is made as to its accuracy, and interested parties should place no reliance on this information and are required to complete their own independent enquiries, inclusive of due diligence. Should you not be able to attend in person, we offer a walk through inspection via online video walk-through or can assist an independent person/s to inspect on your behalf, prior to an offer being made on the property.

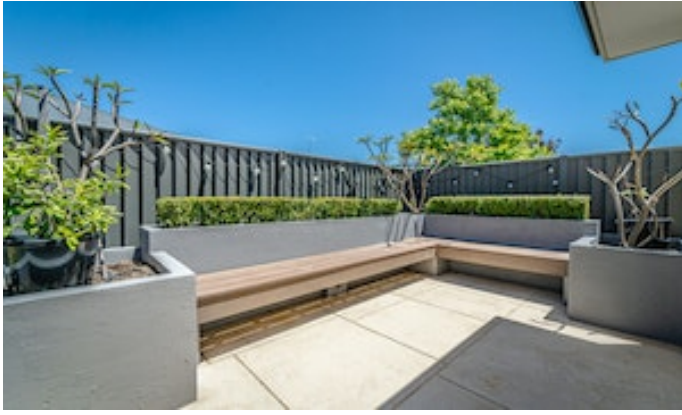
All measurements/dollar amounts are approximate only and generally marked with an \* (Asterix) for reference. Boundaries marked on images are a guideline and are for visual purposes only. Buyers should complete their own due diligence, including a visual inspection before entering into an offer and should not rely on the photos or text in this advertising in making a purchasing decision.

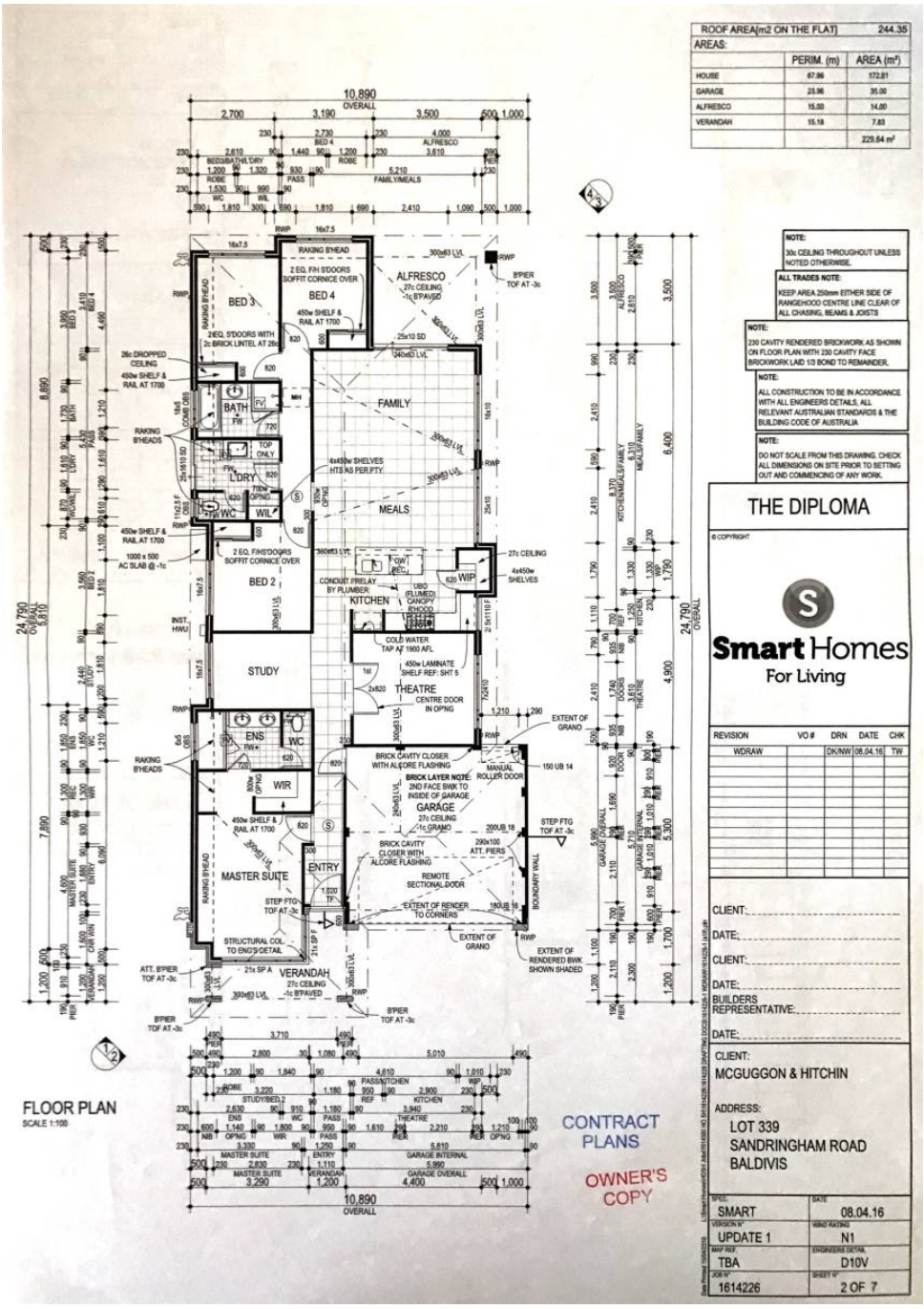
- Land Area 375.00 square metres
- Bedrooms: 4
- Bathrooms: 2
- Double garage











The particulars contained herein are supplied for information only and shall not be taken as a representation in any respect on the part of the vendor or its agent. Interested parties should contact the nominated person or office for full and current details.