



16 Parkview Drive, MURRAY BRIDGE, SA 5253

Comfortable Living In 'Pathways Estate'

This beautiful brick home sits on an approx. 576m² allotment in 'Pathways Estate' comprising of 4 bedrooms (master with walk-in-robe and ensuite). Living area upon entry, second living / dining and kitchen with walk in pantry.

Main bathroom with separate toilet.

Split-system air-conditioning for year-round comfort, carport with roller door provides direct home access and the secure fenced yard has established gardens and lawned area with the added bonus of side driveway access absolutely perfect for parking the caravan/camper/van/motor home or boat!

This home will tick a few boxes!

For further information or to arrange an inspection please call Ali Bolt on

0437 290 698.

TYPE: Sold

INTERNET ID: 300P131624

SALE DETAILS

\$460,000

CONTACT DETAILS

Murray Bridge

93 Railway Terrace

TAILEM BEND, SA

08 8572 8006

RLA: 62833

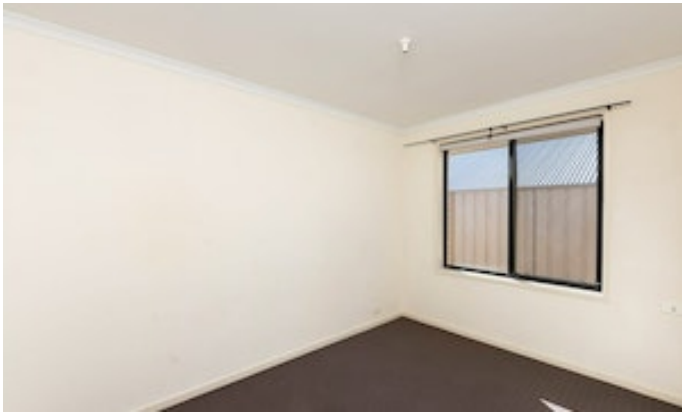
Ali Bolt

0437 290 698

Disclaimer: We have in preparing this information used our best endeavours to ensure that the information contained herein is true and accurate but accept no responsibility and disclaim all liability in respect of any errors, omissions, inaccuracies, or misstatements that may occur. Prospective purchasers should make their own enquiries to verify the information contained herein. Elders Real Estate RLA62833

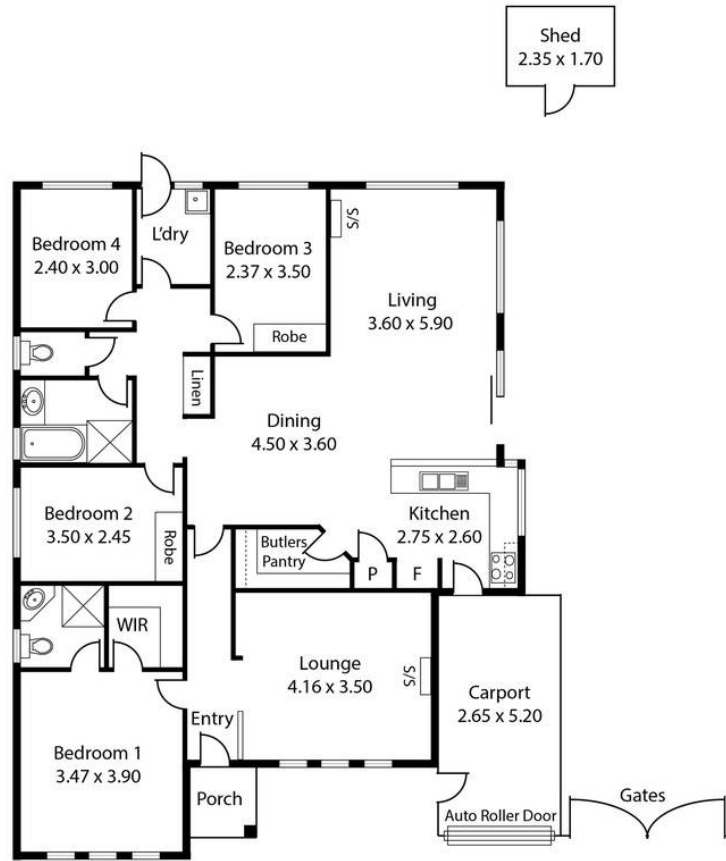
- Land Area 576.00 square metres
- Bedrooms: 4
- Bathrooms: 2
- Car Parks: 2







16 Parkview Drive,
MURRAY BRIDGE



Living: 139.06 sqm
 Porch: 2.25 sqm
 Carport: 13.78 sqm
 Total: 155.09 sqm

This Drawing is for illustration purposes only.
 Not To Scale. All measurements are internal and approximate.
 Details intended to be relied upon should be independently verified.
 Produced by Open2view.com