



62 Drevers Road, STREAKY BAY, SA 5680

Great home, shedding and plenty room to move

Situated on 20 acres a few kilometers from beautiful Streaky Bay.

Trees and shrubbery have been deliberately planted to allow quaint areas throughout the property for picnic and barbecue spots.

The home is located down a long driveway on a rise towards the rear of the block. Made of weatherboard the home consists of 3 good sized bedrooms all with carpet and ceiling fans. The main has reverse cycle air conditioning, walk-through double-sided robes into an ensuite with glass shower alcove, vanity, wall mirror, toilet, heat lights and exhaust fan. The large open spaced L shaped lounge, dining, family room which also has enough room for an office has a wood combustion heater, bar with a polished wooden bench top, 2 ceiling fans with a stylish wood panel ceiling, also installed in the kitchen.

The kitchen has a vinyl floor, double sink, electric wall oven and grill, electric bench top coil elements, ample cupboards and draws, walk-in pantry and a rounded breakfast island. The main bathroom has a corner shower alcove with shower curtain, vanity, built-in bath, wall mirror, 4 heat lights, exhaust fan & light and the toilet is separate. The tiled laundry has washing machine taps, a large walk-in linen/store room with shelving and external access. The short passage houses a fixed bookshelf.

At the front of the home is a 3.5m x 5m wooden entertainment deck taking in the views

The particulars contained herein are supplied for information only and shall not be taken as a representation in any respect on the part of the vendor or its agent. Interested parties should contact the nominated person or office for full and current details.

TYPE: Sold

INTERNET ID: 300P134250

CONTACT DETAILS

WUDINNA
44 Eyre Highway
WUDINNA, SA
08 8680 3300
RLA: 62833

Elaine Seal
0428 400 210

over the land, also as a front wrap around enclosed verandah with a metre high wall and flywire to roof, this leads to the side pergola area with enclosed with lattice and shade cloth.

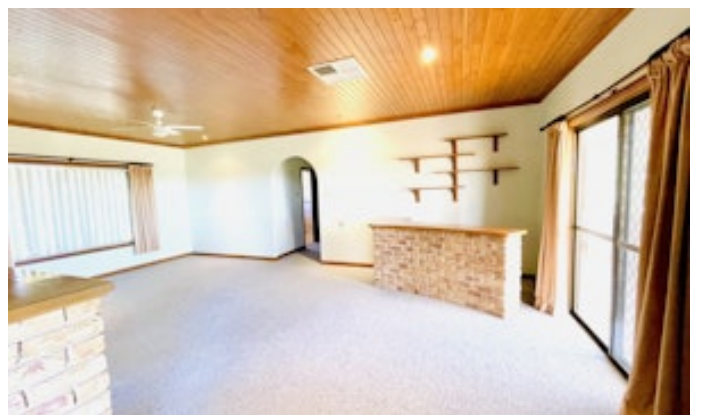
From the rear garden is a 9m x 9m Garage + a 3m side bay equipped with power, fluro lights, concrete floor, shelving and workbenches. Attached in front is a 3 bay 9m x 9m carport with gravel floor and power access. 4 x 5000g, 2 x 2000g, 2 x 1000g tanks supply the property with water. However, mains water is accessible from back corner paddock, if required.

The most recent improvement to the property is a 15m x 9m x 3.7m high 3 bay Shed with sliding doors, workshop, benches, concrete floor, power, fluro lights, includes a 2m roller door one side leading to the fish cleaning facility and a single access door at the front. Large enough to house the caravan, boat or any size vehicle.

This property is the complete package, be quick to secure your dream and live the life you desire. Contact Elaine for further information or book a private inspection.

Other features: Bush Retreat, Carpeted

- Land Area 8.093 hectares
- Bedrooms: 3
- Bathrooms: 2
- Car Parks: 5
- Double garage
- Ensuite

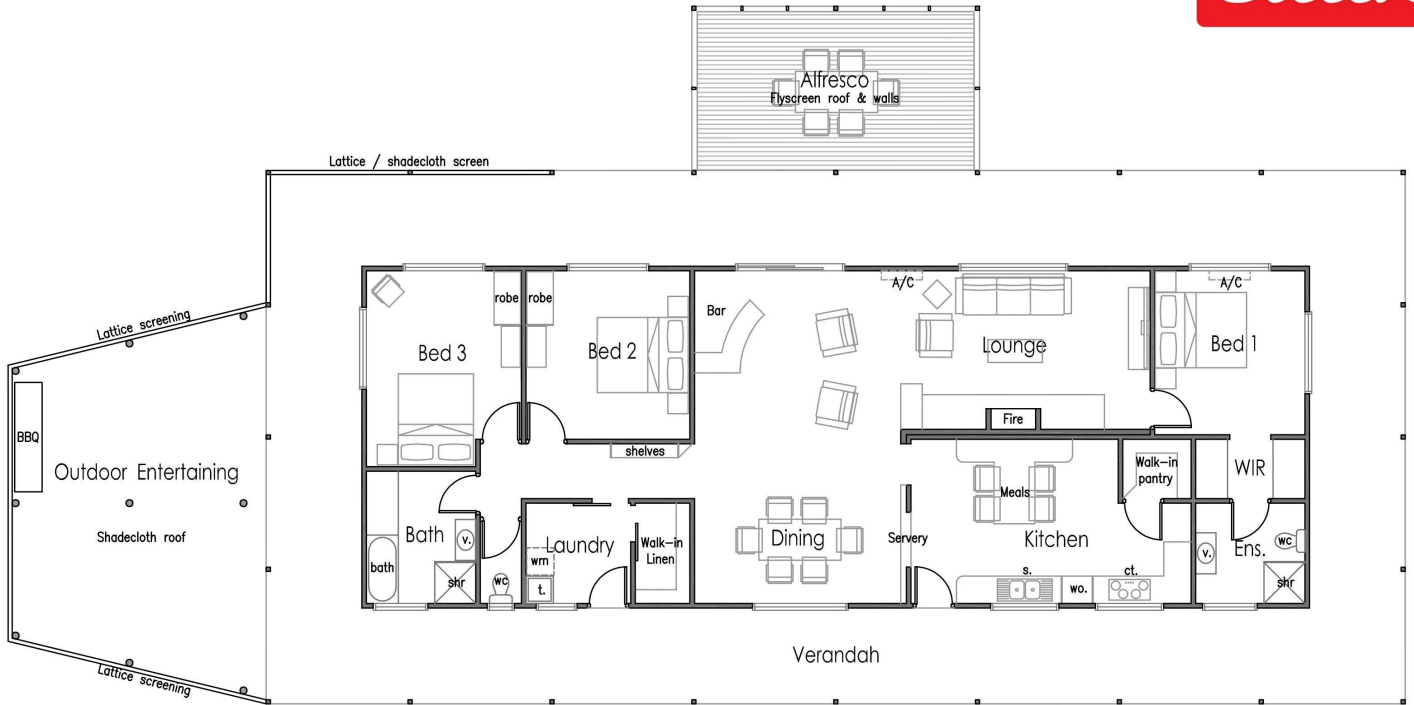












Floor Plan
Not to scale

62 Drevers Road, Streaky Bay

This floor plan including furniture, fixture measurements and dimensions are approximate and for illustrative purposes only. Meridian 153 gives no guarantee, warranty or representation as to the accuracy and layout. All enquiries must be directed to the agent, vendor or party representing this floor plan.