



127 Mount Road, WATTENING, WA 6568

BEAUTIFUL BLEND OF CLASSIC AND NEW!

Occasionally something special comes along that somehow touches your soul. Welcome to that extraordinary place where your dreams come true. Nestled on 52 acres of pristine farmland, is a breath taking oasis that promises an exceptional lifestyle like no other.

As you step onto the expansive verandah, the panoramic views of the beautiful farmland will take your breath away. It's a place where you can sit, relax, and simply feel great about yourself. This isn't just a property; it's a masterpiece of history and modern luxury seamlessly combined.

Behind you stands a classic historic 1860 home with an impressive entrance, soaring ornate ceilings, and generously proportioned rooms that exude timeless elegance. French doors open to reveal a modern and stylish indoor/outdoor living space that blends seamlessly with the classic charm of the original structure. It's a unique blend that just works, creating an atmosphere of unparalleled warmth and sophistication.

This 5 bedroom, 2 bathroom home is brimming with character and lovingly presented. The old world bar room is a personal favourite, and the wide-open modern section with cafe style doors that open to a huge outdoor entertaining area is perfect for hosting gatherings and creating lasting memories. The ensuite is twice the size of most bathrooms and boasts a walk-through robe room, providing a luxurious retreat within your own home.

The particulars contained herein are supplied for information only and shall not be taken as a representation in any respect on the part of the vendor or its agent. Interested parties should contact the nominated person or office for full and current details.

TYPE: Sold

INTERNET ID: 300P136612

SALE DETAILS

\$895,000

CONTACT DETAILS

**Elders Real Estate,
Northam**

15 Peel Terrace
NORTHAM, WA
08 9622 6000

Sharon Johnson
0418 958 651

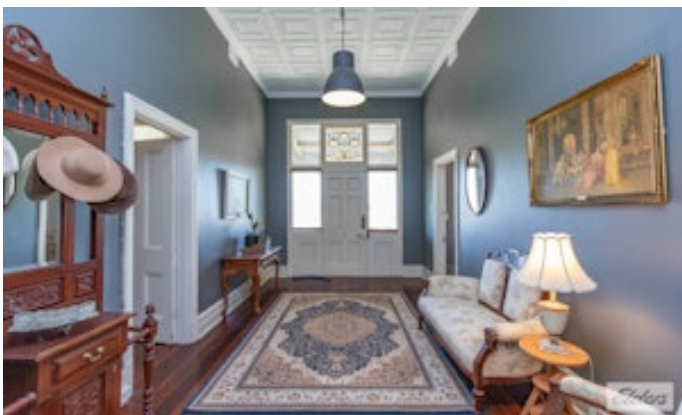
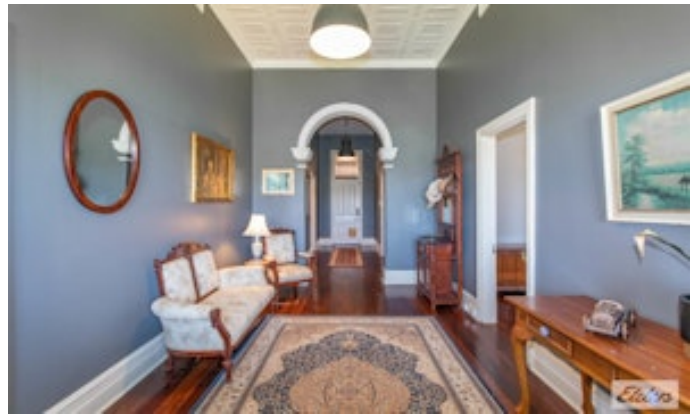
Beyond the home, the 52 acres of land offer endless possibilities. A year-round stream meanders through the property, providing ample water for lush gardens. Two dams and a large rainwater tank ensure that your water needs are always met. Additionally, a near-new 3-car garage with a workshop awaits your projects and hobbies, while a classic man cave offers a space to unwind and relax.

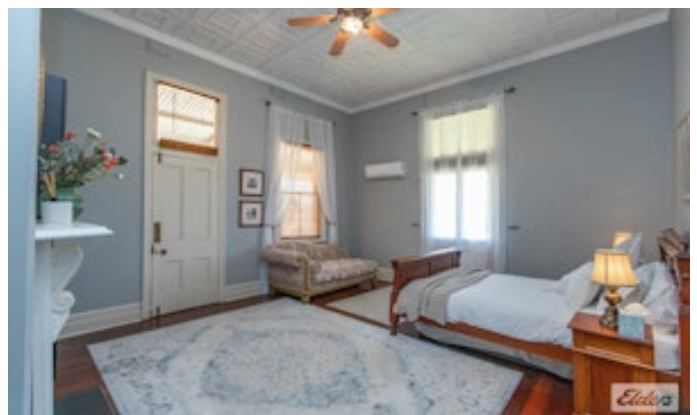
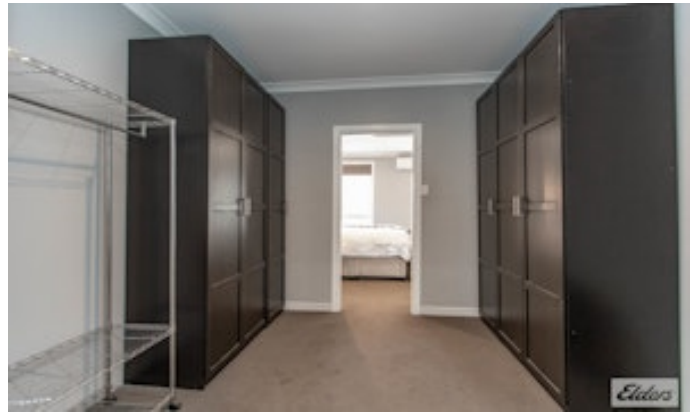
This is a very desirable property, and in today's competitive market, it won't last long. Don't miss your chance to make this your forever home.

But that's not all! Before you visit in person, be sure to take our virtual internal tour to experience the charm and elegance of this remarkable property. Your dream home is here, don't wait make it yours today!

- Land Area 21.0437 hectares
- Bedrooms: 5
- Bathrooms: 2
- 6 car garage











GROSS INTERNAL AREA
FLOOR 1: 322 m², EXCLUDED AREAS:
PORCH: 35 m²
TOTAL: 322 m²

SIZES AND DIMENSIONS ARE APPROXIMATE, ACTUAL MAY VARY.

FLOOR 1

