



## 4 Oasis Crescent, YARRAWONGA, VIC 3730

### EXQUISITE CONTEMPORARY RESIDENCE IN GOLFING ESTATE!

A flawless expression of contemporary family luxury, this stunning four-bedroom, two-bathroom residence epitomises privacy and sophistication in an unrivaled estate. The seamless floorplan effortlessly flows between living and entertaining zones. The spectacular family domain incorporates a state-of-the-art kitchen, WIP, dining and living area opening up to a sun-drenched alfresco via stacker doors to overlook sparkling I.G pool.

#### Features:

- \* Ensuite and spacious WIR to Master bedroom.
- \* Separate lounge / cinema room.
- \* Large Island bench in kitchen boasting stone benchtop.
- \* Ducted reverse cycle air conditioning.
- \* Oversized DLUG with built-in storage and adjoining storage / garden shed or ideal golf cart storage option.
- \* Polished exposed concrete surrounding I.G pool and outdoor entertaining area.

The particulars contained herein are supplied for information only and shall not be taken as a representation in any respect on the part of the vendor or its agent. Interested parties should contact the nominated person or office for full and current details.

**TYPE:** For Sale

**INTERNET ID:** 300P137324

#### SALE DETAILS

**\$895,000**

#### CONTACT DETAILS

**Elders Real Estate  
Yarrawonga**  
48 Belmore Street  
Yarrawonga, VIC  
03 5743 9500

**Xavier Leslie**  
0409 324 037

\* Electric pool heat pump.

\* Ultra-low maintenance garden, allowing more time for leisure.

Enviably situated within a quiet, family friendly neighbourhood and surrounded by other quality homes, this sprawling residence showcases a lifestyle of bespoke family luxury in the golfing Estate of Silverwood's.

Other features: Carpeted, Exhaust, Golf Course Estate, Heating, Openable Windows, Prestige Homes

- Land Area 660.00 square metres
- Bedrooms: 4
- Bathrooms: 2
- Double garage
- Ensuite



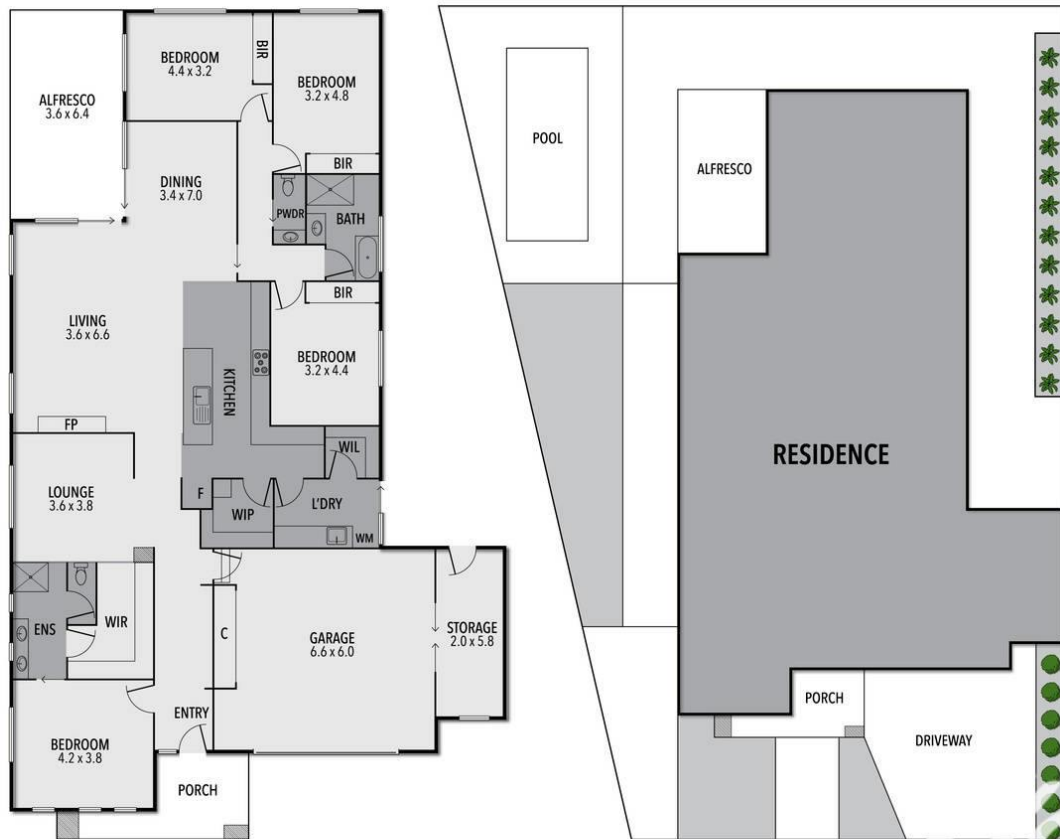








## 4 OASIS CRESCENT, YARRAWONGA



THE ABOVE PLAN IS AN ARTIST'S IMPRESSION ONLY, IT INCLUDES ELEMENTS THAT ARE FOR DISPLAY PURPOSES ONLY AND MAY NOT BE TO SCALE. LANDSCAPING SHOWN IS INDICATIVE ONLY. DIMENSIONS ARE APPROXIMATE.

