



6 Nankeen Court, LEANYER, NT 0812

CLASSIC ELEVATED TROPPO HOME IN A QUIET CUL-DE-SAC!

This classic elevated Darwin tropo home is set upon an 807sqm land allotment and features a practical and typical elevated layout, with three generous sized bedrooms and solid timber flooring throughout. The open-plan living area is the heart of the home, featuring a large original kitchen overlooking the spacious living and dining area. Downstairs boasts an undercover carport for two cars, a large lockable storeroom, undercover laundry area and built in timber bar which overlooks the inground fully fenced spa and under house entertainment area.

What we love about this property:

- Open floor plan design: living, kitchen and dining area can be sectioned off by the hallway door
- Large u-shaped kitchen with breakfast bar and ample storage including overhead cupboards
- Three spacious bedrooms, each with full sized built-in robes
- Timber floorboards and louvred windows throughout

TYPE: Sold

INTERNET ID: 300P137412

SALE DETAILS

SOLD

CONTACT DETAILS

leanyer

Shop 13B Hibiscus
Shopping Town 8 Leanyer
Drive Leanyer
DARWIN, NT
08 8995 7500

Derek Hart

0409 702 631

- Paved area under the house doubles as an outdoor alfresco living space adjacent to the fully fenced spa and built in timber bar, perfect for outdoor gatherings
- An external undercover laundry is located adjacent to the large lockable storeroom
- Double undercover carport with ample space to the side of the home for parking of other vehicles, trailers and caravan

The home is located on a spacious land allotment offering plenty of space for children to play, pets to roam and for those who love to garden with a blank canvas to create your garden oasis. There is ample room for future projects such as a swimming pool.

The location is ideal with easy access to local schools, shops and public transportation. The Leanyer Recreation Park and Casuarina Square Shopping Centre are just a short drive away, offering plenty of entertainment options for the whole family.

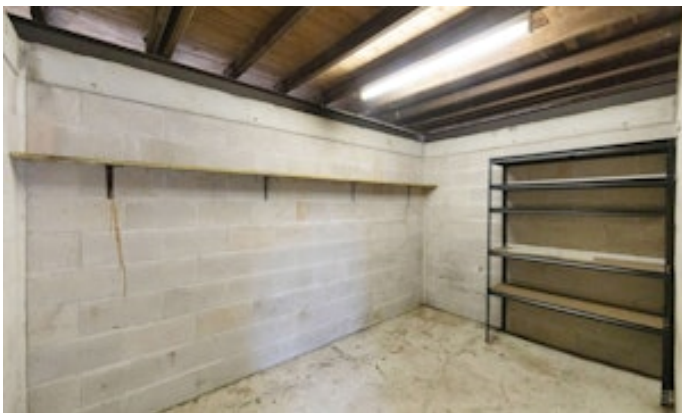
Expressions of Interest closing date 01/11/2024

"Make a Start with Team Derek Hart".

Other features: Close to Schools, Close to Shops, Close to Transport, Spa

- Land Area 807.00 square metres
- Bedrooms: 3
- Bathrooms: 1
- Car Parks: 2
- Floorboards







6 Nankeen Court, Leanyer