



## 14 Thomson Street, NORTHAM, WA 6401

### Charming Family Haven: 14 Thomson Street, Your Northam Sanctuary

Welcome to 14 Thomson Street, a peaceful retreat nestled in the heart of Northam on a spacious 696m2 lot. This charming home offers the perfect blend of comfort and convenience, boasting 4 bedrooms and 1 bathroom. Wall mounted reverse cycle air conditioning to some rooms.

Step inside to discover a spacious and relaxing atmosphere, with ample room for the whole family. The layout features a large car garage at the front, providing plenty of space for storage or workshop needs.

Outside, the rear of the property showcases a delightful deck space, perfect for enjoying the serene surroundings and entertaining guests.

Conveniently located, this property offers easy access to town amenities including the Northam Hospital, ensuring all your essential needs are within reach.

Don't miss the opportunity to make 14 Thomson Street your new home sweet home. Contact us today to schedule a viewing and experience the tranquility of Northam living firsthand.

The particulars contained herein are supplied for information only and shall not be taken as a representation in any respect on the part of the vendor or its agent. Interested parties should contact the nominated person or office for full and current details.

**TYPE:** Sold

**INTERNET ID:** 300P138237

#### SALE DETAILS

**Offers over \$319,000**

#### CONTACT DETAILS

**Elders Real Estate,  
Northam**

15 Peel Terrace  
NORTHAM, WA  
08 9622 6000

**Sharon Johnson**  
0418 958 651

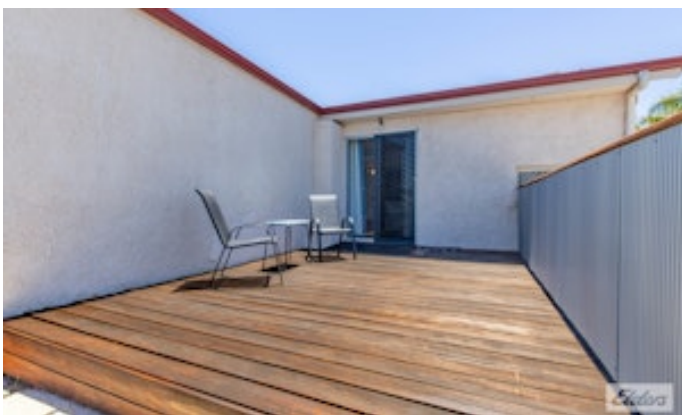
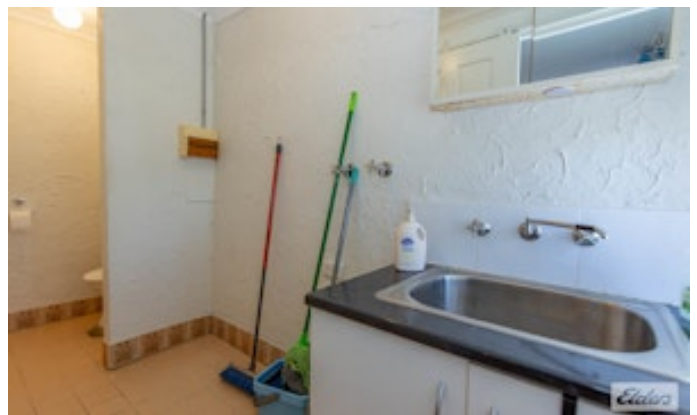
All inquiries to exclusive selling agents Elders Real Estate

Sharon Johnson | 0418 958 651 | Sharon.Johnson@elders.com.au

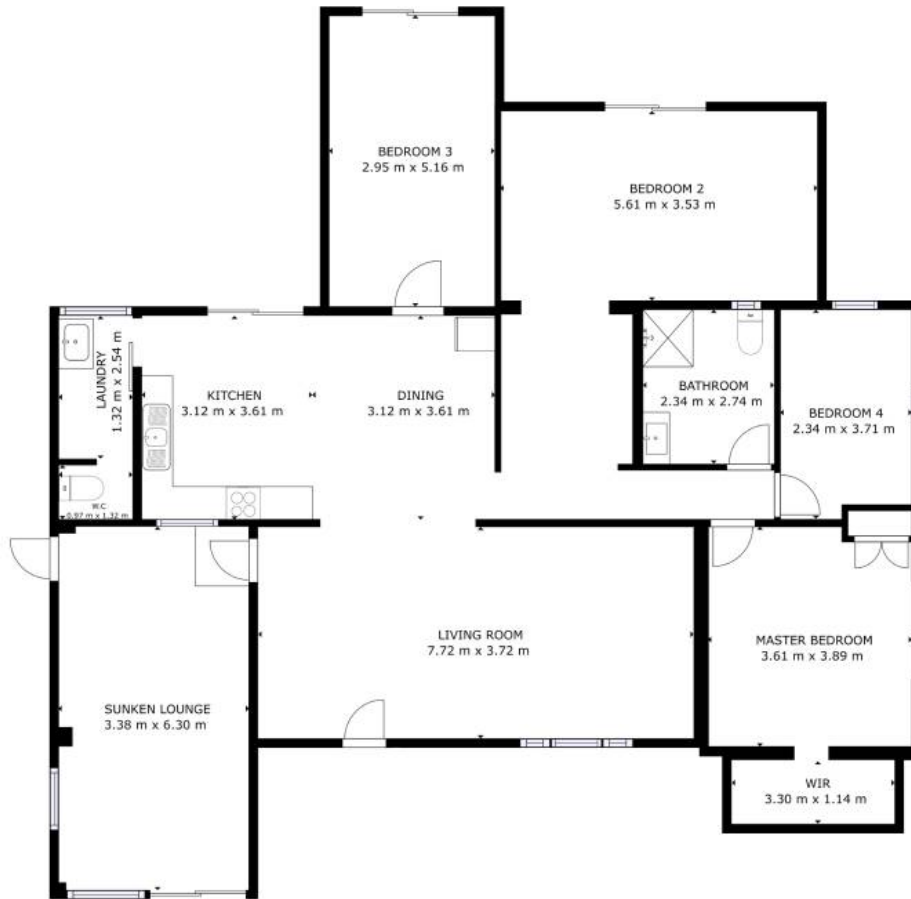
- Land Area 696.00 square metres
- Building Area: 166.00 square metres
- Bedrooms: 4
- Bathrooms: 1
- Car Parks: 2
- Single garage











GROSS INTERNAL AREA  
FLOOR 1: 163.65 m<sup>2</sup>  
EXCLUDED AREA; ENTRY: 6.54 m<sup>2</sup>  
TOTAL: 163.65 m<sup>2</sup>  
SIZES AND DIMENSIONS ARE APPROXIMATE, ACTUAL MAY VARY.

