

## Albany Views Private Estate , DROME, WA 6330

Expansive Cul-De-Sac Lot

**1.09 hectares, 2.70 acres**

Escape to Albany Views, a premium lifestyle development on the outskirts of Albany.

You will love this generous lot with plenty of room for the dream home, big shed, and whatever you fancy in the garden.

Relax in a tranquil country environment, soak up magical sunsets, and enjoy the incredible beaches and natural attractions of the Great Southern whilst being an easy drive to vibrant Albany.

- Expansive 1.09 hectare lot at the end of a cul-de-sac
- Serviced with power, mains water, and NBN
- Rural fencing with post-and-rail style entrance and 4m sealed crossover
- No building timeframes, shed allowance 200sqm

**TYPE:** Sold

**INTERNET ID:** 300P138596

**SALE DETAILS**

**\$300,000**

**CONTACT DETAILS**

**Albany Real Estate**  
189 Chester Pass Road  
ALBANY, WA  
08 9842 7900

**Blair Scott**  
0459 024 026

- Beautiful rural setting with lovely sunsets
- Less than 2 mins to airport and 10 mins to CBD
- 10 mins from Albany town centre and 15 mins from Middleton Beach
- Titles expected August 2024

Perfectly blending city living near the Albany town centre with the charm of vast rural blocks, this spacious plot provides the canvas for your dream lifestyle.

Please contact Blair Scott for latest availability and information pack.

- Land Area 1.0937 hectares

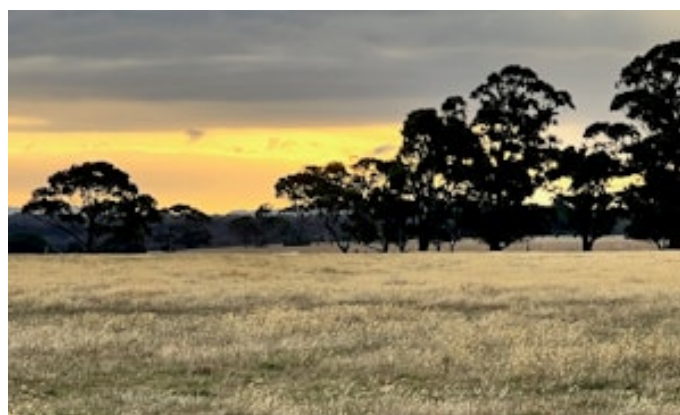
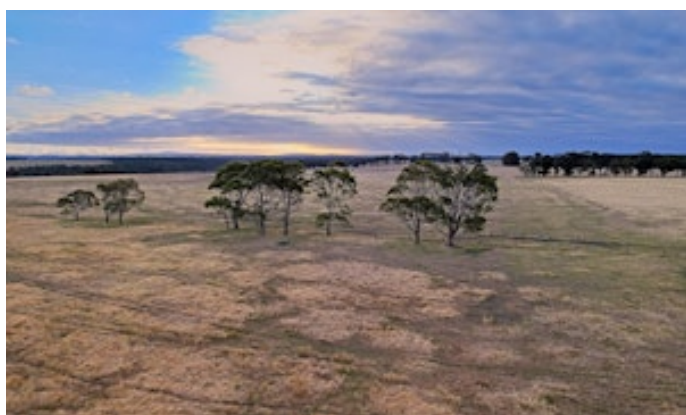




## STAGE 1 SALES PLAN

PRICES FROM \$300,000

ALBANY VIEWS  
PRIVATE ESTATE







# STAGE 1 SALES PLAN



**ENQUIRE NOW**



CALL BLAIR SCOTT 0459 024 026  
albanyviewsprivateestate.com.au