



16 Encounter Terrace, ENCOUNTER BAY, SA 5211

POSITION – POTENTIAL – PRICE – PERFECT

****Price Guide \$550,000****

This very attractive villa home with 9ft ceilings throughout has all of the attributes listed below, and then some.

Situated only 200m from the seafront in beautiful Encounter Bay, easy walk to all of the local cafes etc. and around 15-20 minutes to walk into Victor Harbor central.

Comprising of open plan living / dining / kitchen which is in very good order, has more than enough bench and cupboard space and overlooks the main living space and the rear gardens.

Master bedroom with walk-through robe, ceiling fan and ensuite access to the bathroom. Bedroom 2 also has a ceiling fan and is quite generous in size. Bedroom 3 is a little smaller and would be ideal as an office / or hobby space.

The bathroom has vanity, shower and bath. Separate w.c.. Separate Laundry. Single

The particulars contained herein are supplied for information only and shall not be taken as a representation in any respect on the part of the vendor or its agent. Interested parties should contact the nominated person or office for full and current details.

TYPE: Sold

INTERNET ID: 300P139693

SALE DETAILS

Best Offers Before 11th March (USP)

CONTACT DETAILS

Elders Victor Harbor
11-13 Victoria Street
VICTOR HARBOR, SA
08 8555 9000
RLA: 62833

Bill Harvey
0417 820 311

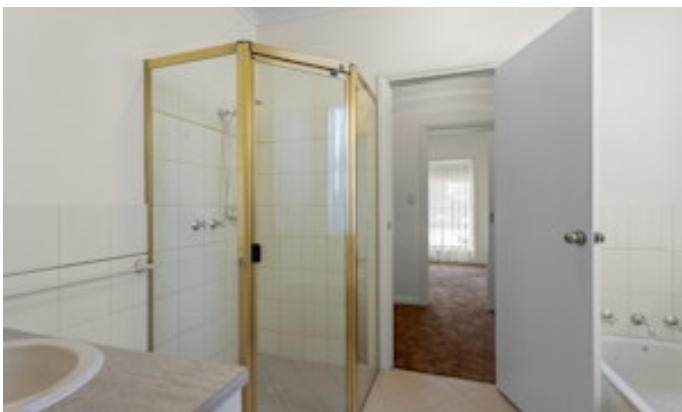
garage.

This is the perfect property for the investor, first timer, holiday buyer or the retiree. On the flat, close to the sea front, easy walking distance to local attractions and services. This will tick a lot of boxes for a lot of buyers, so I suggest you book an inspection at your earliest opportunity to avoid missing out.

Disclaimer: We have in preparing this information used our best endeavours to ensure that the information contained herein is true and accurate but accept no responsibility and disclaim all liability in respect of any errors, omissions, inaccuracies or misstatements that may occur. Prospective purchasers should make their own enquiries to verify the information contained herein. RLA 62833

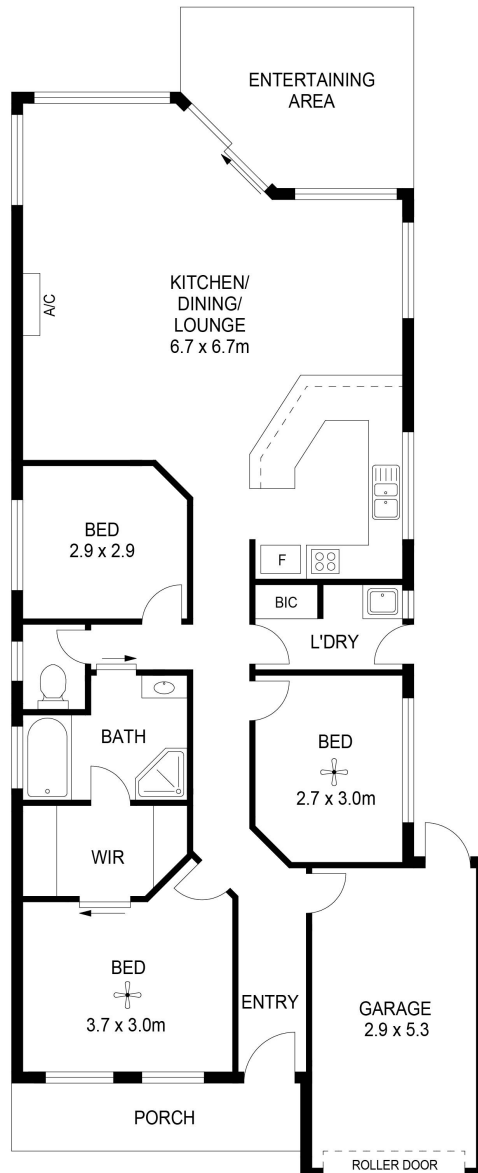
- Bedrooms: 3
- Bathrooms: 1
- Car Parks: 1











This drawing is for display purpose only.
All measurements are approximate and information
intended to be relied upon should be independently verified.
Created by www.angelagilesphotography.com