



Lot 167 Scotts Creek Shack Road, MORGAN, SA 5320

Ready to be Enjoyed

0.10 hectares, 0.25 acres

Set in the Scott's Creek shack site is this lovely, elevated holiday home on a high set block. Unlike many less fortunate properties, this particular home remained dry and unaffected upstairs with damage being limited to the shed which will need to be demolished and rebuilt. The house which features exposed timber throughout, has three bedrooms all with built in robes, with an expansive open plan living area all with ducted r/c air conditioning. Having been built close to the river, offers the new owners stunning views of the river. The allotment is fenced with lawn slowly returning to this once picture-perfect property. The riverbank has retaining walls with a pontoon and provides the perfect place to moor the boat. If you love skiing and want a holiday home that you can enjoy immediately, Look no Further!

- Land Area 1,000.00 square metre
- Bedrooms: 3
- Bathrooms: 1

TYPE: Sold

INTERNET ID: 300P151574

SALE DETAILS

\$815,000

CONTACT DETAILS

Elders Riverland

2 East Terrace

LOXTON, SA

8588 6066

RLA: 62833

Wayne Kleemann

0417 000 988

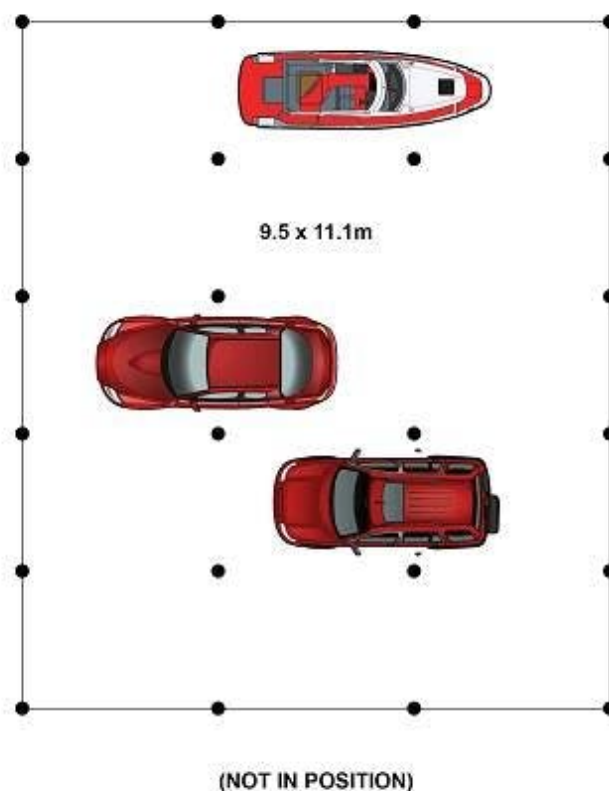
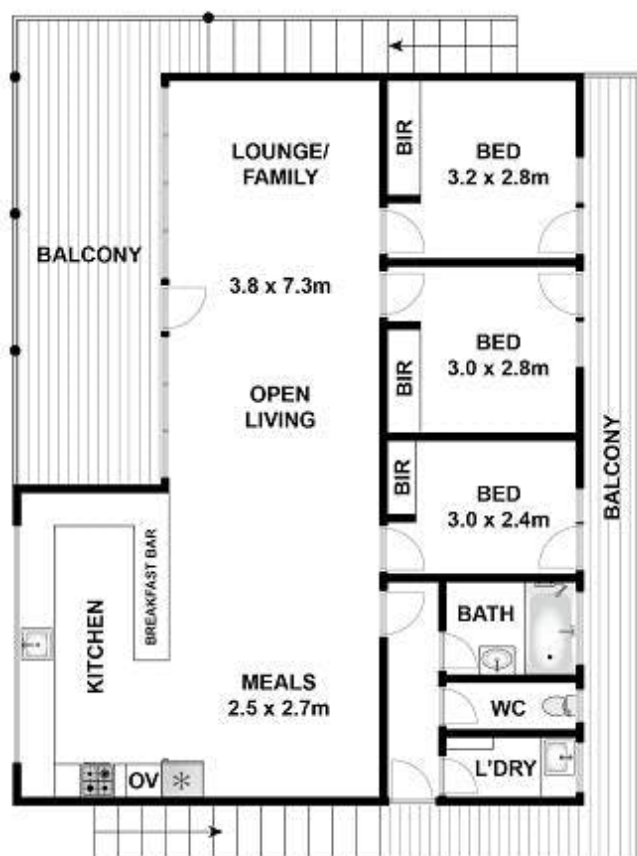
HOMESTEAD

Bedrooms	3
Bathrooms	1









Approx House Area 114m²

Whilst bwrm.com.au has made every attempt to ensure the accuracy of the floor plan contained here, measurements are approximate and no responsibility is taken for any error, omission, or mis-statement. This plan is for illustrative purposes only.

167 Scotts Creek Shack Road, Morgan

Elders Real Estate