

58 Rex Hills Drive, RIPLEY, QLD 4306

2 Bedroom Duplex, in Prime Location

Positioned in the growing suburb of Ripley, this modern 2-bedroom duplex offers the perfect combination of low-maintenance living, comfort, and convenience. Ideal for first-home buyers, downsizers, or investors, the home features air-conditioning, open-plan living, covered outdoor entertaining, and a fully fenced backyard - all designed for easy everyday living.

Whether you're looking to move in or expand your investment portfolio, this property presents an excellent opportunity in a high-growth location.

General Information:

Occupancy: Tenanted 11/25 - 11/26

Rental Return: Currently \$380 per week (appraised at \$450)

Orientation: Northern Facing (approx.)

Construction: Brick

TYPE: For Sale

INTERNET ID: 300P151656

SALE DETAILS

Offers over \$575,000

CONTACT DETAILS

Ipswich

8 Downs Street
North Ipswich, QLD
07 3201 3600

Paul Lunin

0439 047 659

Roof Type: Colourbond

Hot Water System: Electric

Cooktop: Electric

Fencing: Fully fenced backyard

Screens: Security screens throughout

Smoke Alarms: Compliant

Safety Switch: Compliant

Air-conditioning: Split-system air-conditioning

Low-maintenance allotment

Property Features:

Spacious open-plan living and dining area with air-conditioning and direct outdoor access

Modern kitchen with breakfast bar, electric cooktop, stainless-steel appliances, dishwasher, pantry, and ample bench/storage space

2 well-sized bedrooms with built-in wardrobes and ceiling fans

Contemporary main Bathroom with shower, vanity.

Laundry within garage

Covered alfresco area overlooking the fully fenced backyard

Single remote lock-up garage with internal access

Area Details:

Located in the sought-after suburb of Ripley

Close to local parks, playgrounds, and walking tracks

Minutes to Ripley Town Centre, caf  s, dining, and everyday conveniences

Close to childcare centres and local schools

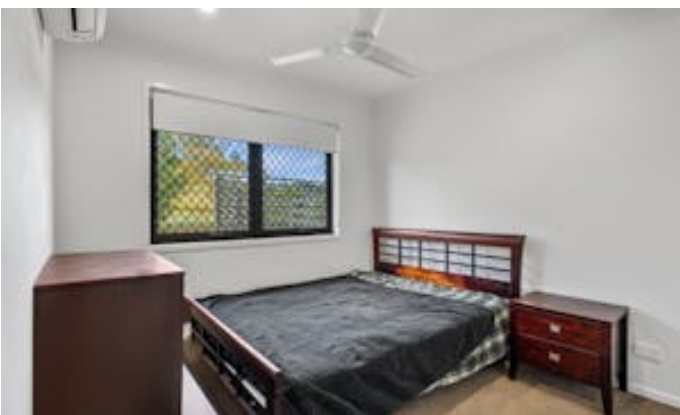
Easy access to the Cunningham Highway

Approx. 15 minutes* to Ipswich CBD

Approx. 45 minutes* to Brisbane CBD

Please contact Paul Lunin on 0439 047 659 to arrange your inspection.

- Land Area 310.00 square metres
- Building Area: 96.00 square metres
- Bedrooms: 2
- Bathrooms: 1
- Single garage





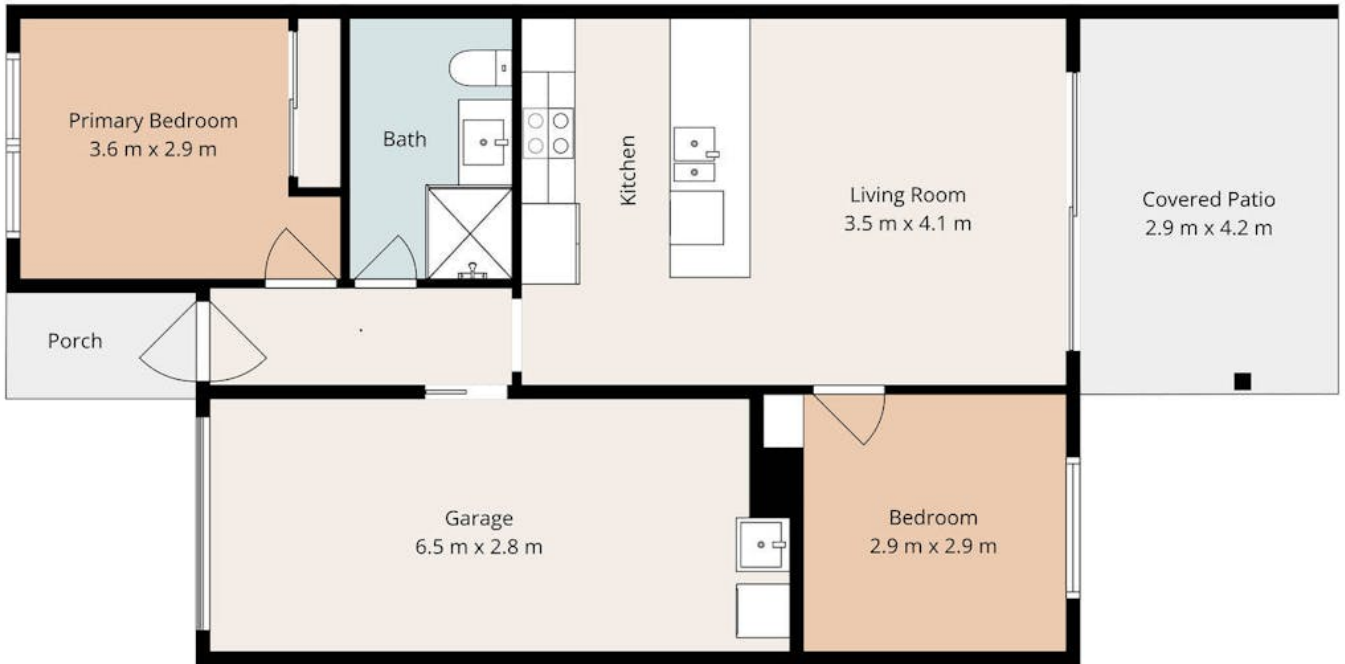
58 Rex Hills Dr, Ripley



2 | 1 | 1 | 310 m²

Paul Lunin | 0439 047 659

Total approx floor area 96m² (including covered external areas)



Whilst every attempt has been made to ensure the accuracy of the floor plan contained here, measurements of doors, windows, rooms and any other items are approximate and no responsibility is taken for error, omission or mis-statement. This plan is for illustrative purposes only and should only be used as such by any prospective purchaser. The services system and appliances shown have not been tested and no guarantee as to their operability or efficiency can be given.