



5 Lara Close, MULWALA, NSW 2647

Custom-Built Lifestyle Excellence in Riverland Gardens.

Set on a beautifully landscaped 4,090m² (approx. 1 acre) allotment within Mulwala's highly desirable Riverland Gardens estate, this custom-built family home offers a rare combination of quality craftsmanship, premium features, and versatile living spaces - perfect for relaxed country living with all the modern comforts.

From the moment you step inside, you'll appreciate the attention to detail and high-end finishes, including soaring ceilings, engineered "Black Butt" timber flooring, square-set cornice and a striking feature wood fireplace that anchors the main living area with warmth and character.

Accommodation comprises five generously sized bedrooms (or four plus a study/utility room), serviced by two stylish bathrooms. The heart of the home is a chef-inspired kitchen boasting stone benchtops, a walk-in pantry and quality appliances - seamlessly flowing to the spacious dining and open-plan living zone. A separate lounge or kids' retreat provides additional flexibility for growing families.

Step outside to the rear covered timber-decked entertaining area - ideal for hosting friends and family - while enjoying the privacy and serenity of a low-maintenance, established allotment.

TYPE: For Sale

INTERNET ID: 300P162030

SALE DETAILS

\$1,125,000

CONTACT DETAILS

**Elders Real Estate
Yarrawonga**
48 Belmore Street
Yarrawonga, VIC
03 5743 9500

Xavier Leslie
0409 324 037

Additional Features Include:

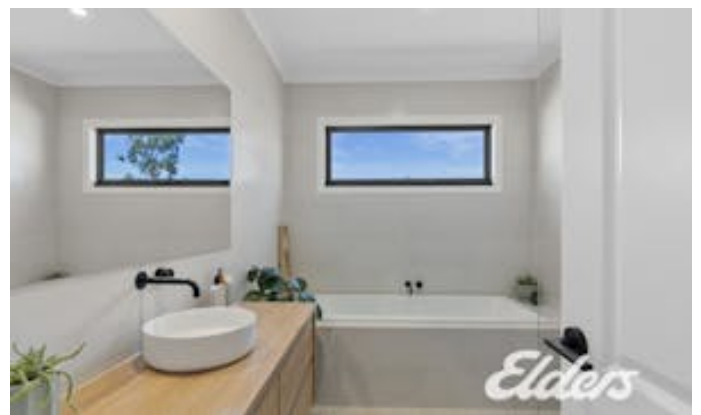
- * Double garage under roofline.
- * 12m x 8m (approx.) steel garage with attached three-bay carport â## ideal for tradespeople, hobbyists or secure storage of boats, vans and equipment.
- * Ducted reverse cycle air conditioning for year-round comfort.
- * Ducted vacuum system.
- * Abundance of internal storage throughout.
- * Quality fixtures and fittings inside and out.

This premium lifestyle property combines luxury living with practical design - all within minutes of Mulwala's town Centre, Lake Mulwala and local amenities.

Other features: Carpeted, Close to Schools, Close to Shops, Exhaust, Heating, Openable Windows, Prestige Homes

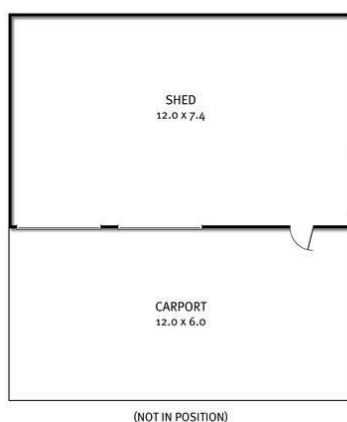
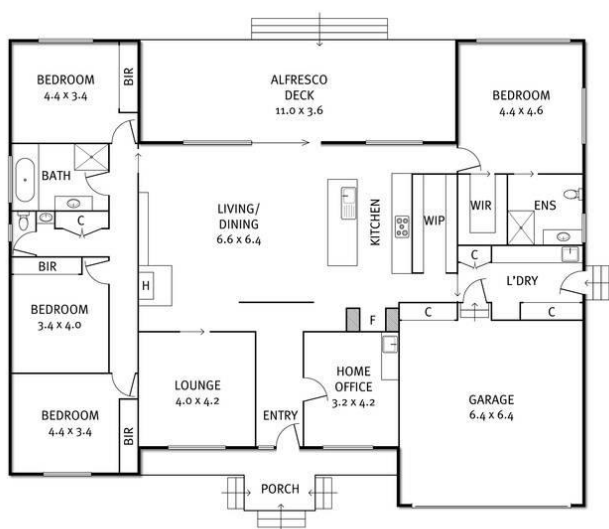
- Land Area 4,090.00 square metres
- Bedrooms: 4
- Bathrooms: 2
- 5 car garage
- Ensuite
- Floorboards







5 Lara Close, Mulwala



THE ABOVE PLAN IS AN ARTIST'S IMPRESSION ONLY, IT INCLUDES ELEMENTS THAT ARE FOR DISPLAY PURPOSES ONLY AND MAY NOT BE TO SCALE.
LANDSCAPING SHOWN IS INDICATIVE ONLY. DIMENSIONS ARE APPROXIMATE.