

17 Wivenhoe Close, CLINTON, QLD 4680

Renovated Family Home in a Quiet Cul-de-Sac

Nestled in a peaceful pocket of Clinton, 17 Wivenhoe Close presents an exceptional opportunity for families, first home buyers, or investors seeking space, comfort, and convenience.

The current owners have done the hard work, beautifully renovating the home and preparing it for sale. This well-maintained four-bedroom, two-bathroom residence sits proudly on a generous 771m² block, offering relaxed living with room to grow.

Inside, you'll find a thoughtfully designed floorplan featuring four spacious bedrooms, all with built-in robes and ceiling fans. The master suite includes air-conditioning and a private ensuite, while the main bathroom has been newly renovated and is complemented by a separate toilet for added convenience.

The heart of the home is the open-plan living and dining area, ideal for entertaining or unwinding with family. The modern kitchen is well-equipped with quality appliances, ample bench space, and generous storage, making everyday living a breeze.

Outside, the property features a fully fenced backyard with plenty of space for kids and

TYPE: For Sale

INTERNET ID: 300P163022

SALE DETAILS

Offers over \$625,000

CONTACT DETAILS

Jay Murray-Lowe
0497 508 122

The particulars contained herein are supplied for information only and shall not be taken as a representation in any respect on the part of the vendor or its agent. Interested parties should contact the nominated person or office for full and current details.

pets to play, plus potential for future landscaping or additions. Whether you're looking to move straight in or invest, this home is ready to go.

Located in Seaview Heights, one of Gladstone's most sought-after streets, this property is a true gem tucked away in a quiet cul-de-sac. It's currently vacant and ready for its new owners.

Contact Jay Murray-Lowe today to arrange your private inspection.

For a walk-through video, reach out to Carly on 0477 697 727.

Rental Appraisal: \$600â##\$620 per week

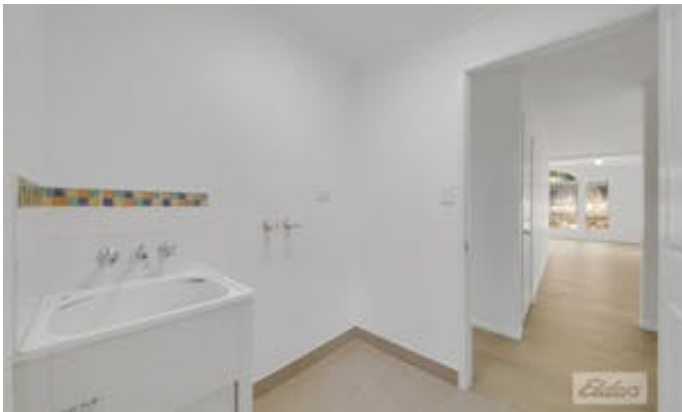
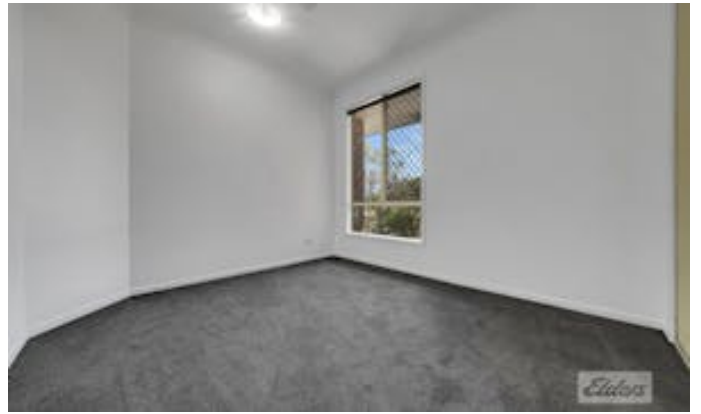
Don't Miss Out â## Your New Home Awaits

Whether you're buying your first home or adding to your portfolio, 17 Wivenhoe Close offers quality, location, and value. Act quickly to secure this standout property.

Other features: Close to Schools, Close to Shops, Close to Transport

- Land Area 771.00 square metres
- Bedrooms: 4
- Bathrooms: 2
- Double garage
- Floorboards









17 Wivenhoe Close
Clinton

Floor plan is provided as indicative layout only. Measurements are not available. Floor plan is not to scale. No guarantees provided on accuracy. Exterior elements are not in position.

