



202 Bullers Road, KEPA, SA 5259

Off Grid Country Living

62.04 hectares, 153.30 acres

Approximately 153.3ac or 62.04ha just 25km from Murray Bridge & 15km to Taillem Bend.

100ac arable currently under share farm arrangement with opportunity to continue.

Beautifully presented 1 bedroom cottage with loft ready for extra bedrooms conversion.

Open plan kitchen/dining/lounge with gas appliances & slow combustion heater.

Well-appointed bathroom & laundry.

Front & side verandas, carport & portable chicken coop.

12panel/3kw solar/battery system, mains water & rainwater tanks.

Inspection is the only way to appreciate all that is on offer.

TYPE: Sold

INTERNET ID: 300P164032

SALE DETAILS

\$500,000 to \$510,000

CONTACT DETAILS

Murray Bridge

93 Railway Terrace

TAILEM BEND, SA

08 8572 8006

RLA: 62833

John Robinson

0409 609 457

*** For all open inspections, please enter gateway at 154 Bullers Road, thank you***

Call John Robinson 0409609457 or Ali Bolt 0437290698

Disclaimer: We have in preparing this information used our best endeavours to ensure that the information contained herein is true and accurate but accept no responsibility and disclaim all liability in respect of any errors, omissions, inaccuracies, or misstatements that may occur. Prospective purchasers should make their own enquiries to verify the information contained herein. Elders Real Estate RLA62833

- Land Area 62.038309 hectares
- Bedrooms: 1
- Bathrooms: 1

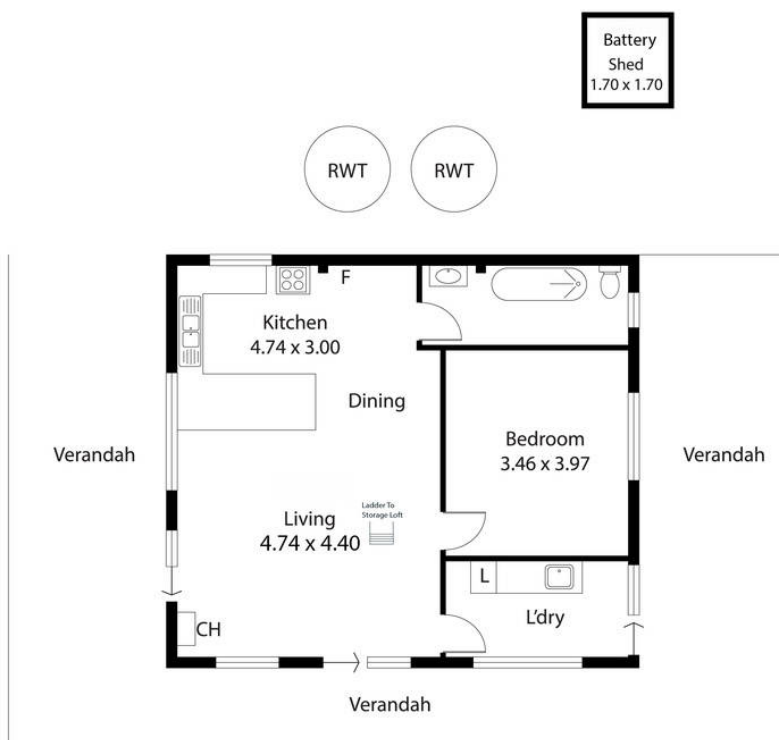
HOMESTEAD

Bedrooms	1
Bathrooms	1





202 Bullers Road,
KEPA



Living:	66.88sqm
Verandah:	68.27sqm
Shed:	2.89sqm
Total:	138.04 sqm



This Drawing is for illustration purposes only.
Not To Scale. All measurements are internal and approximate.
Details intended to be relied upon should be independently verified.
Produced by Open2view.com