



10 Colonial Drive, JINDERA, NSW 2642

Often sought, Seldom found. 3*Ha | 7.42*Acres

This is a property that you need to see to truly appreciate!

Welcome to your new family home. Not only is this exceptional property both beautifully established and very well maintained, it is absolutely a once in a lifetime opportunity to embrace the essence of country living.

This stunning residence offers a harmonious blend of classic charm and modern comforts, making this the perfect colonial style family home.

At one end of this spacious home are three generously sized bedrooms, all with built in robes. The main living areas, office, kitchen and dining are centrally located while at the other end you will find an impressive master suite with a generous walk-in robe and an ensuite that boasts a double shower.

Entering the formal lounge through French doors you will find yourself escaping to your own retreat, whilst the combined open plan family, dining and kitchen area creates a very spacious entertaining area for every day living. The open kitchen featuring high quality appliances including an induction cook top, double electric oven and dishwasher

The particulars contained herein are supplied for information only and shall not be taken as a representation in any respect on the part of the vendor or its agent. Interested parties should contact the nominated person or office for full and current details.

TYPE: Sold

INTERNET ID: 300P164116

SALE DETAILS

**EXPRESSIONS OF
INTEREST**

CONTACT DETAILS

Albury rural
297 Schubach Street
Albury, NSW
02 6021 3355

Andrew Kane

overlooks the sparkling inground swimming pool.

All year round comfort is provided by the combination of a wood fire, ducted evaporative cooler and a split system. The home has recently undergone a fresh coat paint, with new carpets installed throughout.

This magnificent home includes a full bathroom with both a separate powder room and toilet for convenience. There is a large laundry with walk in linen cupboard and a secure triple lock up garage with internal access to the home.

An entertainers delight, walk out from your living / dining area straight into your luxurious alfresco & outdoor entertaining area equipped with electric zip-trak blinds and a wood heater for all year round entertaining and comfort. For extra added entertainment and relaxation, the alfresco links directly to a separate games room/ retreat area complete with shower/ toilet and separate pool access.

The inground salt water pool, complete with a unique rock feature creates a refreshing oasis for swimming and relaxing.

All your storage and workshop needs are taken care of with the 10m x 20m Colourbond shed, cleverly designed to have access from multiple sides. There is also a 4 bay machinery / wood shed with animal shelters and chicken coop.

Enjoy the benefits of sustainable living with a 13.3kw solar system

Located within walking distance to the idyllic town of Jindera, this exceptional home offers the perfect combination of tranquillity and convenience with its impeccable presentation and luxurious features, and prime location to the golf course and shops.

This home will provide ample space for you and your family to grow and thrive.

Don't miss this opportunity to make this colonial style home yours.

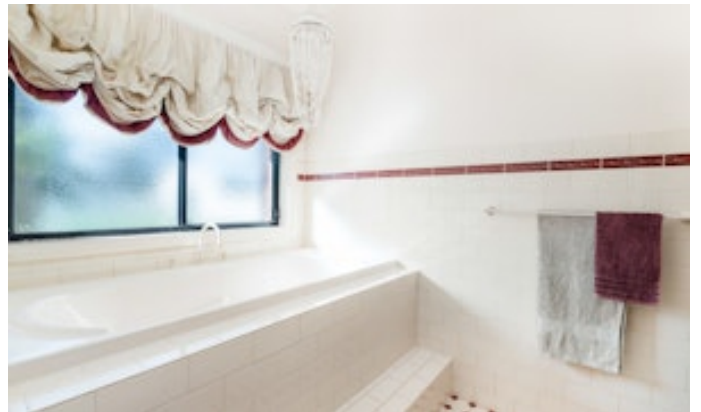
Expressions of Interest close Wednesday 13th of November at 12:00PM, at the Elders office 297 Schubach St Albury, 2640

- Land Area 3 hectares
- Bedrooms: 4
- Bathrooms: 3
- 3 car garage











SIZES AND DIMENSIONS ARE APPROXIMATE, ACTUAL MAY VARY