



1/3 Linthorpe Street, YARRAWONGA, VIC 3730

Refined Waterside Living in a Prestigious Yarrowonga Setting

Set within an exclusive waterside enclave, 1/3 Linthorpe Drive, Yarrowonga presents a sophisticated interpretation of waterside living, where timeless design, effortless maintenance, and an exceptional location converge.

Thoughtfully designed to maximise its enviable outlook, the home's kitchen, dining, and lounge areas are beautifully oriented to capture uninterrupted water vistas, ensuring the calming presence of the water is enjoyed from the heart of the home.

Light-filled interiors flow seamlessly to the outdoors, creating an elegant balance between indoor comfort and open-air living with the entertaining area perfectly positioned for hosting in style, while the private swimming pool evokes a resort-inspired atmosphere - offering year-round enjoyment with minimal upkeep.

Every element of the home has been curated to support a lock-and-leave lifestyle, ideal for those seeking luxury without compromise.

Key features include:

TYPE: For Sale

INTERNET ID: 300P165163

SALE DETAILS

\$1,189,000

CONTACT DETAILS

**Elders Real Estate
Yarrowonga**

48 Belmore Street
Yarrowonga, VIC
03 5743 9500

Leigh Ramsdale
0408 385 150

- Sought-after lifestyle location
- Beautiful water views
- Tiled swimming pool
- Expansive under cover entertainment area
- Low-maintenance living
- Master suite with water view
- Guest wing with two bedrooms, central bathroom & separate toilet
- Large home office
- Rear & front access for parking / storing caravan & boats
- Ideal as a permanent residence, holiday home, or investment

With direct access to the foreshore and just steps from the world-class golf course, dining, and leisure facilities of the Sebel Complex, this residence delivers an unrivalled lifestyle defined by relaxation, recreation, and refinement.

Call Leigh Ramsdale or Xavier Leslie to book your inspection today!

Other features: Area Views, Carpeted, Exhaust, Heating, High Clearance, Openable Windows, Pool, River Views

- Land Area 1,073.00 square metre
- Bedrooms: 3
- Bathrooms: 2
- Car Parks: 2
- Double garage
- Ensuite

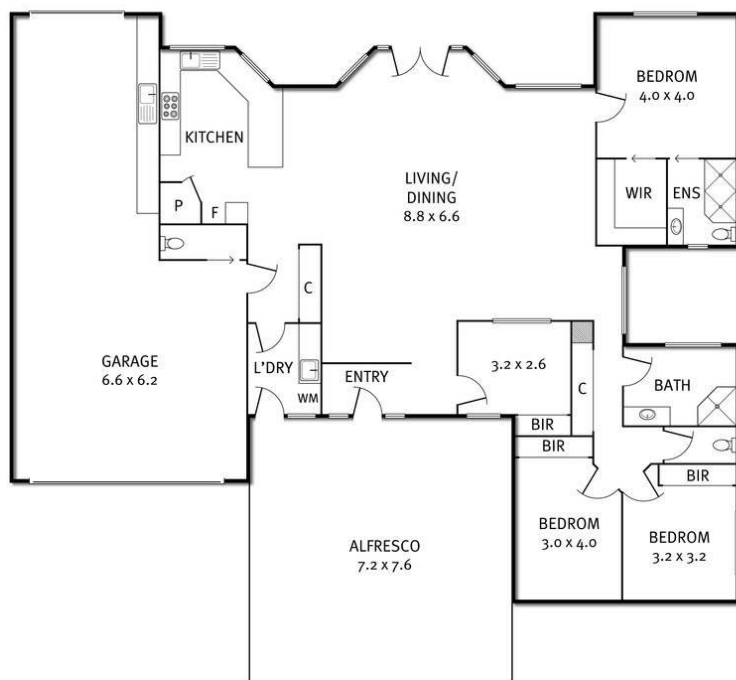








1/3 Linthorpe Drive, Yarrawonga



THE ABOVE PLAN IS AN ARTIST'S IMPRESSION ONLY, IT INCLUDES ELEMENTS THAT ARE FOR DISPLAY PURPOSES ONLY AND MAY NOT BE TO SCALE. LANDSCAPING SHOWN IS INDICATIVE ONLY. DIMENSIONS ARE APPROXIMATE.