



## 1 Foote Place, WHYALLA STUART, SA 5608

Spacious Layout with Modern Finishes!

Allotment size: 336m2

Council rates: \$1,933.65 per annum

Year built: 2014

Zoned: General Neighbourhood

Currently leased: \$365 per week until 24 February 2025

Discover a prime investment opportunity with this exceptional property, brimming with potential for consistent returns and future growth. Just moments away from Westlands Shopping Centre, Bennett Oval, parks, and a local Catholic primary school, this property boasts convenience. Featuring a generous layout and quality fixtures throughout, it's perfectly suited for investors seeking a solid asset. Don't miss your chance to invest in a property that promises both immediate rental appeal and long-term financial rewards!

Entry to hallway

**TYPE:** Sold

**INTERNET ID:** 300P166549

**SALE DETAILS**

**SOLD BY JAKE POPE**

**CONTACT DETAILS**

**Elders Real Estate - Whyalla**

2 Patterson Street

Whyalla, SA

08 8644 4600

RLA: 62833

**Jake Pope**

0437 829 177

Large, modern open plan living

Functional kitchen with electric appliances and built-in pantry

Three carpeted bedrooms, all with split-system air conditioning

Master with ensuite and walk-through robe

Main bathroom with separate bath and shower

Tiled powder room and separate toilet

Tiled laundry with external access

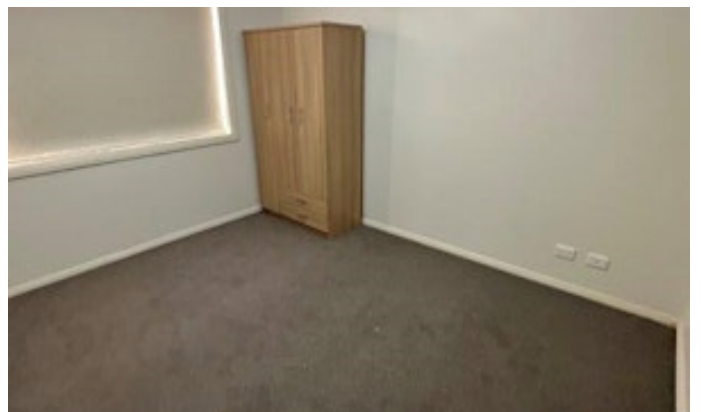
Floating floors to all main living areas

Garage with automatic roller door and internal access

Low maintenance front and rear yards with colourbond perimeter fencing

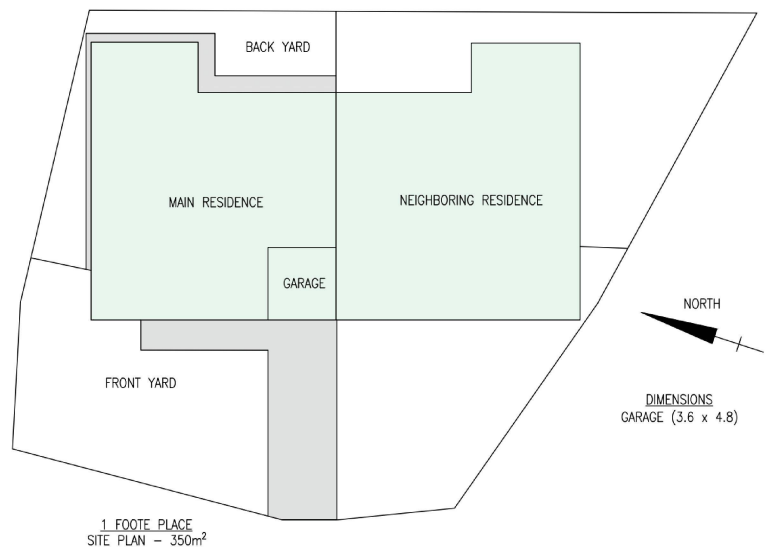
Disclaimer: We have in preparing this information used our best endeavours to ensure that the information contained herein is true and accurate but accept no responsibility and disclaim all liability in respect of any errors, omissions, inaccuracies, or misstatements that may occur. Prospective purchasers should make their own enquiries to verify the information contained herein. Elders Real Estate RLA62833

- Land Area 336.00 square metres
- Bedrooms: 3
- Bathrooms: 2
- Single garage









THIS FLOORPLAN IS PROVIDED WITHOUT WARRANTY OF ANY KIND. METRIC DISCLAIMS ANY WARRANTY INCLUDING, WITHOUT LIMITATION, SATISFACTORY QUALITY OR ACCURACY OF DIMENSIONS.