



## 591 Worlds End Highway, EUDUNDA, SA 5374

Farm it, Ride it, Love it

Elders Real Estate is proud to present one of the most pristine lifestyle allotments to hit the Eudunda market. Welcome to 591 Worlds End Highway, a rare opportunity to secure a beautifully maintained family home set on a versatile and productive 23 acre parcel of land.

Lovingly owned by just one family since its construction in 1983, this Fairmont-built brick veneer home is immaculately presented throughout and offers the space, flexibility, and functionality every growing family dreams of.

### Home Features:

- Spacious master bedroom with ensuite, carpet, sheer and block-out curtains, and a large window bathing the room in natural light
- Three additional bedrooms with soft carpeting, blinds, lace and block-out curtains, bedroom 4 includes built-in mirrored robes
- L-shaped main living area featuring large windows, vinyl flooring, and a cosy slow combustion fireplace

**TYPE:** For Sale

**INTERNET ID:** 300P168028

### SALE DETAILS

**\$999,000 - \$1,099,000**

### CONTACT DETAILS

**Barossa**

127 Murray Street  
Tanunda, SA  
(08) 8562 2883  
RLA: 62833

**Teri Wenske**

0409 687 465

- Second living/dining zone conveniently positioned around the central kitchen with electric cooking
- Versatile third living area/rumpus room â## ideal as a games room or optional fifth bedroom, complete with floating floors and dual access
- Mains water & power connected, along with rainwater tanks plumbed to the kitchen and laundry
- Ducted reverse cycle air-conditioning and slow combustion heating for year-round comfort

#### Recent Upgrades:

- New Colourbond roof, gutters, and eaves
- Fresh carpets in all bedrooms
- Updated window treatments in living areas and master bedroom
- New hot water service installed in 2024

#### Land & Lifestyle:

- Approx. 23 acres in total, with 16.5 acres of arable land currently share farmed across two paddocks
- Bonus private motorbike track â## perfect for weekend fun or adventurous kids
- Front fence with double gate access and stock water trough

#### Shedding â## A True Standout:

This property features an impressive array of shedding, ideal for tradespeople, car enthusiasts, or those simply needing space:

- 1983 Ahrens Shed â## 30ft x 62ft with concrete floor, 15-amp power, mechanical pit and lined room with power and reverse cycle split system â## 3 sliding doors
- 2001 Delta Shed â## 40ft x 25ft with concrete floor and single-phase power â## 4 sliding doors
- 2010 Grant Shed â## 30ft x 62ft with bluestone rubble floor â## 5 sliding doors

Whether you're looking for the ultimate family lifestyle, small-scale farming, or space to run a business from home, 591 Worlds End Highway offers it all. Properties of this calibre, with such a rich combination of land, home, and infrastructure, rarely come to market.

This is a must-see opportunity â## act fast to secure this exceptional lifestyle property in Eudunda.

#### Disclaimer:

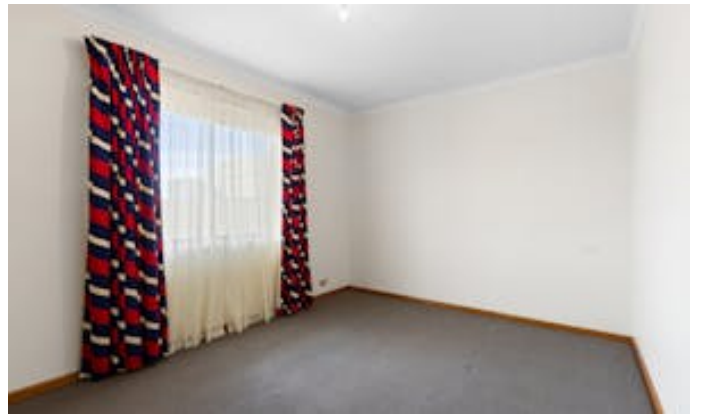
We have in preparing this information used our best endeavours to ensure that the information contained herein is true and accurate but accept no responsibility and disclaim all liability in respect of any errors, omissions, inaccuracies, or misstatements that may occur. Prospective purchasers should make their own enquiries to verify the information contained herein. Elders Real Estate RLA62833

Other features: 3 Phase Power

- Land Area 9.3 hectares
- Bedrooms: 4
- Bathrooms: 2
- 15 car garage
- Ensuite











591 Worlds End Highway,  
EUDUNDA



This Drawing is for illustration purposes only. All measurements are internal and approximate. Details intended to be relied upon should be independently verified.