

## 9 Gilmore Close, WOLLONGBAR, NSW 2477

### Architectural Home, Private Setting & Spectacular Views

Set privately in a quiet cul-de-sac, this unique architect-designed home is perfectly positioned to embrace sweeping valley views and maximum relaxation. Set on 2.6 acres with easy-care established gardens, this property offers something truly special.

Soak up the morning sun from the East-facing deck and entertaining area, while you spend all day taking in the view across the property and to the Nightcap Ranges in the North, as well as catching flashes of the Byron Bay lighthouse at night.

The semi-rural lifestyle on offer is a breeze, with thoughtfully designed gardens and flat walking tracks making it easy to have a picture perfect property all year round. Families will love the wide-open spaces both inside and out that make it a ready-made playground for the kids! Whether they're exploring their own "adventure land," fishing in the dam, riding bikes, or looking after pets and farm animals, the upbringing of their dreams is right here.

The home itself has been thoughtfully crafted to suit the block, with soaring ceilings, hardwood floors and light-filled living zones that capture the views from every angle. The master retreat enjoys its own ensuite, walk in robe, make-up station and private deck, while the lower level offers fantastic potential for a self-contained living space with

The particulars contained herein are supplied for information only and shall not be taken as a representation in any respect on the part of the vendor or its agent. Interested parties should contact the nominated person or office for full and current details.

**TYPE:** Auction

**INTERNET ID:** 300P168818

#### AUCTION DETAILS

11:00am, Saturday  
November 8th, 2025

#### CONTACT DETAILS

**Elders Real Estate  
Alstonville**

80 Main Street  
Alstonville, NSW  
(02) 6628 0000

**Jack Oates**  
0429 533 940

one bedroom, bathroom and separate entry â## ideal for extended family, guests or future income.

Practical features add even more appeal, including an underground water licence with crystal-clear water, a dam, and rainwater storage.

Nestled in a tightly held executive address surrounded by quality homes, arriving home to 9 Gilmore Close every day is sure to wash all of life's worries away! Located in the heart of the Northern Rivers, you're under 4km to local supermarkets, 5 minutes to Alstonville, 15 minutes to Ballina and Lismore and 35 minutes to Byron Bay, all while the school bus stops at your door.

This is more than just a home â## it's a lifestyle property designed for families who want space, privacy and connection, without giving up convenience. With offers invited prior to auction, book your inspection with Jack and Troy from Elders Alstonville today!

- Land Area 1.04 hectares
- Bedrooms: 4
- Bathrooms: 3
- Double garage



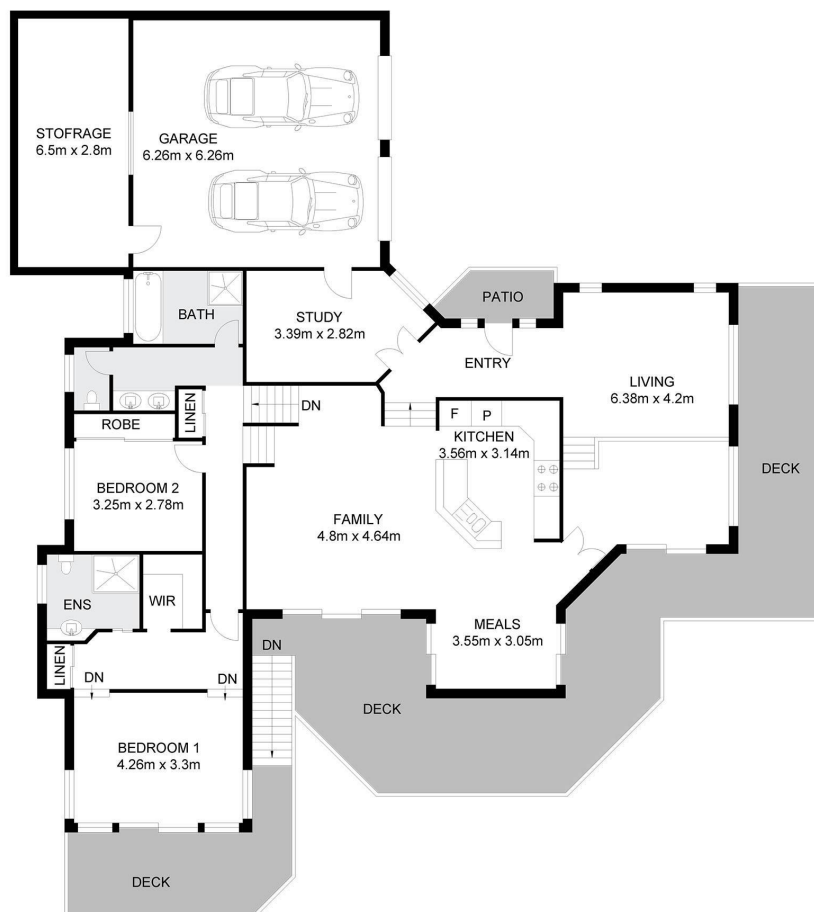
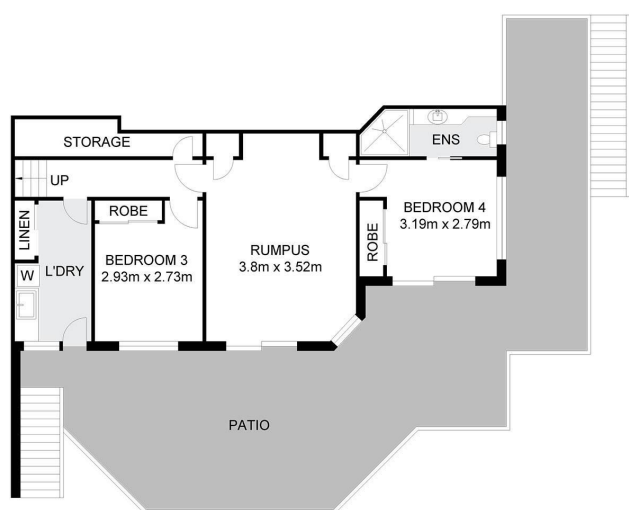












LOWER LEVEL

UPPER / MIDDLE LEVEL

0 1 2 3 4 5

Scale in meters, indicative only. Dimensions are approximate. All information contained herein gathered from sources we believe to be reliable. However we cannot guarantee its accuracy and interested persons should rely on their own enquiries.

INT : 218.7m<sup>2</sup>  
EXT : 62.3m<sup>2</sup>  
GARAGE : 57.8m<sup>2</sup>



## 9 Gilmore Close, Wollongbar