



308 Dalwood Road, DALWOOD, NSW 2477

Two Homes, Sheds and 38 Acres of Flat Land on the Plateau!

15.33 hectares, 37.88 acres

Set out over approx. 38 acres of flat, fertile land, here is the perfect opportunity to live out the rural lifestyle of your dreams.

The 5 bedroom country weatherboard home, rich with character and charm, sits in the middle of the block, privately set back from the road. Boasting authentic timber floors, high ceilings, two bathrooms, two living spaces plus a study - there's truly space for the whole family!

Established gardens beautifully frame the home, while every turn of the head captures the stunning rural vista across the plateau and to the mountain ranges beyond.

An additional workers' cottage provides the opportunity for extra rental income or the ideal option for multi-generational living, while the old dairy and multiple sheds provide over 400sqm of storage for machinery and toys.

TYPE: For Sale

INTERNET ID: 300P169774

SALE DETAILS

\$2,100,000-\$2,300,000

CONTACT DETAILS

**Elders Real Estate
Alstonville**

80 Main Street
Alstonville, NSW
(02) 6628 0000

Troy MacRae
0414 867 035

Enjoy the benefits of a blank canvas when it comes to the land, with the versatility to pursue a myriad of different agricultural activities, from cropping to livestock, all while having the space for the kids to grow up outside riding horses and motorbikes all day long.

Located just 8km to the historic village of Alstonville, 15km to Lismore, 25km to the Ballina Byron Gateway Airport and just a 40 minute drive to the world renowned beaches of Byron Bay, it's no wonder this wonderful property has stayed in the one family for over 40 years.

Your inspection is invited with Troy and Jack from Elders Alstonville, with offers being considered prior to auction. So don't delay, the opportunity of a lifetime awaits!

*Distances and driving times as per Google Maps

- Land Area 15.33 hectares
- Bedrooms: 6
- Bathrooms: 3

HOMESTEAD

Bedrooms	6
Bathrooms	3

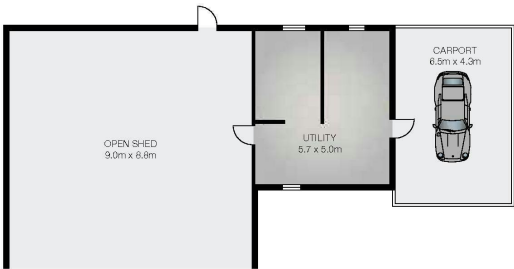




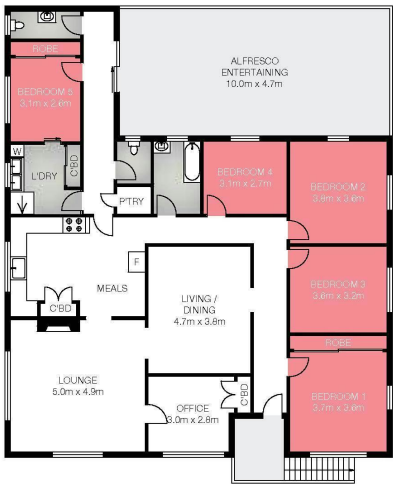




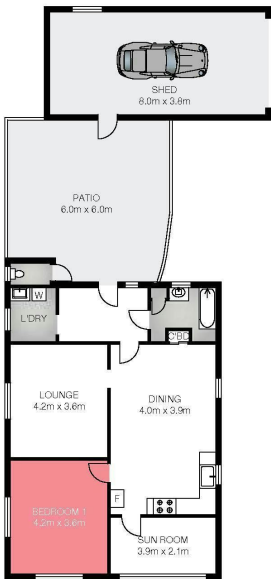
308 Dalwood Road, Dalwood



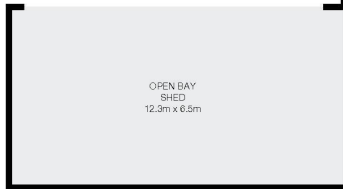
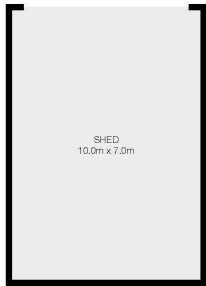
SHED/DAIRY



MAIN RESIDENCE



COTTAGE



SHED



INT : 257.5m²
EXT : 85.1m²
SHED : 404.3m²
CARPORT : 28.0m²

Dimensions are approximate. All information contained herein gathered from sources we believe to be reliable. However we cannot guarantee its accuracy and interested persons should rely on their own enquiries © visionmedia.vision 2024.