



## 26 South Terrace, EUDUNDA, SA 5374

Double the Block Double the Fun

FIRST OPEN INSPECTION - 10 JANUARY 2026

Elders Real Estate are proud to welcome you home to 26 South Terrace, Eudunda, a warm, spacious and thoughtfully designed property that truly delivers on family living.

Built in 2010, this quality Selector home has been designed with growing families in mind. Set across two titles with a generous combined allotment of approximately 2,128m<sup>2</sup>, there's room here for kids to play, pets to roam, and future possibilities to explore. The main house allotment spans approx. 1,061m<sup>2</sup>, with a second allotment of approx. 1,067m<sup>2</sup>

Inside, the home offers three generously sized bedrooms, all designed for comfort. The master suite is a private retreat, complete with built-in robes, ceiling fan, electric roller shutter and a spacious ensuite. Bedrooms two and three feature carpet flooring, ceiling fans and built-in robes, ideal for children or guests.

The heart of the home is the light filled open plan living, dining and kitchen area, enhanced by newly installed flooring and large windows that invite natural light

The particulars contained herein are supplied for information only and shall not be taken as a representation in any respect on the part of the vendor or its agent. Interested parties should contact the nominated person or office for full and current details.

**TYPE:** For Sale

**INTERNET ID:** 300P177825

**SALE DETAILS**

**\$489,000 - \$519,000**

**CONTACT DETAILS**

**Barossa**

127 Murray Street  
Tanunda, SA  
(08) 8562 2883  
RLA: 62833

**Teri Wenske**

0409 687 465

throughout the space. The well-equipped kitchen is perfect for busy family life and entertaining alike, featuring a corner pantry, dishwasher, large island bench, gas cooktop and electric oven so you can cook, connect and keep an eye on everything happening around you.

Step outside through sliding doors to the undercover entertaining area featuring the stunning rear deck, overlooking an expansive backyard that's made for family fun. Whether it's kids kicking a footy, pets running free, or hosting weekend barbecues, this outdoor space is sure to be well loved.

Additional features include a large Colourbond shed with half concrete and half earth flooring with single phase power, cubby house and chicken coop. Large solar system, slow combustion heating and a reverse-cycle split system ensuring comfort and efficiency year round.

Perfectly positioned, this home is just a short walk to the local school, swimming pool, football oval and netball courts, making everyday life easy and community focused.

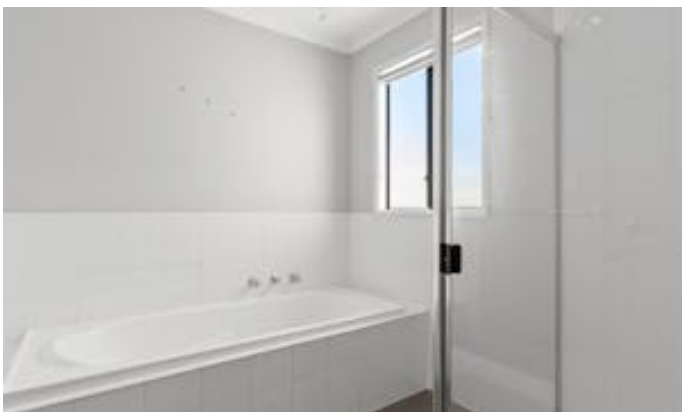
This is a home where families can grow, memories can be made, and a relaxed country lifestyle can be truly enjoyed. Young families this one is calling your name!

Other features: Carpeted

- Land Area 2,128.00 square metres
- Bedrooms: 3
- Bathrooms: 2
- 4 car garage



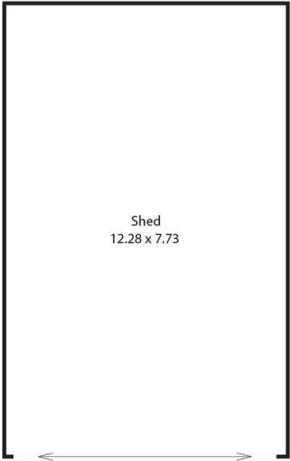
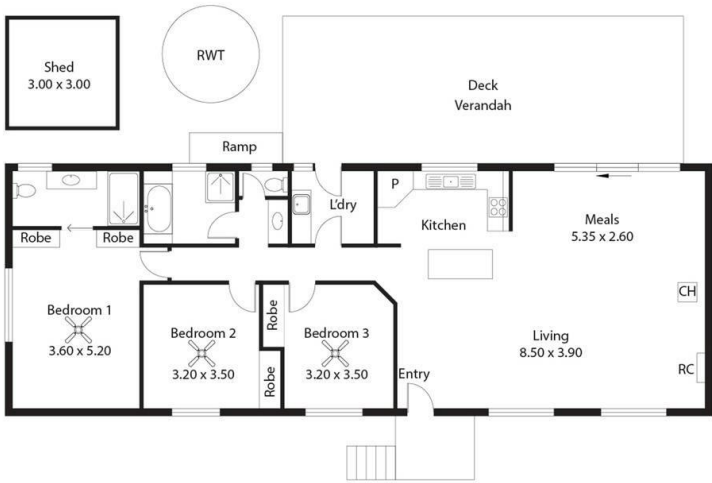








25 SouthTerrace,  
KAPUNDA



Living:	126.38SQ.M
Verandah:	46.20SQ.M
Shed:	103.71SQ.M
Cubby House:	2.78SQ.M
Aviaries:	6.42SQ.M

TOTAL: 285.49SQ.M

This Drawing is for illustration purposes only. All measurements are internal and approximate.Details intended to be relied upon should be independently verified.