



22 J S McEwin Terrace, BLYTH, SA 5462

Luxurious Family Living with Pool & Alfresco

Located in the sought-after neighbourhood of Blyth, 22 J S McEwin Terrace is a stunning, modern home that offers luxurious living with an abundance of space and style. Built in 2011, this immaculately presented four-bedroom plus study residence combines high-end finishes with thoughtful design, perfect for growing families or those who love to entertain.

The heart of the home is the expansive open plan living and dining area, complemented by a spacious, contemporary kitchen featuring modern appliances, a large island bench, and sleek cabinetry. Whether you're hosting family gatherings or casual meals, this space is both functional and elegant.

A dedicated theatre room and separate guests' lounge provide multiple zones for relaxation, entertainment, or quiet time. The master suite is a true retreat, while three additional bedrooms offer ample space and comfort. The home includes two stylish bathrooms and three toilets, ensuring convenience for all family members and guests.

Step outside to a beautifully designed alfresco dining area, perfectly positioned next to the sparkling inground pool - ideal for summer entertaining or relaxing weekends. The home is equipped with a powerful 7.4kW solar system, offering energy efficiency and

The particulars contained herein are supplied for information only and shall not be taken as a representation in any respect on the part of the vendor or its agent. Interested parties should contact the nominated person or office for full and current details.

TYPE: For Sale

INTERNET ID: 300P179805

SALE DETAILS

\$865,000 - \$880,000

CONTACT DETAILS

Elders Real Estate Clare Valley / Burra

230 Main North Road
Clare, SA
08 8842 9300

Rob Calaby
0428560301

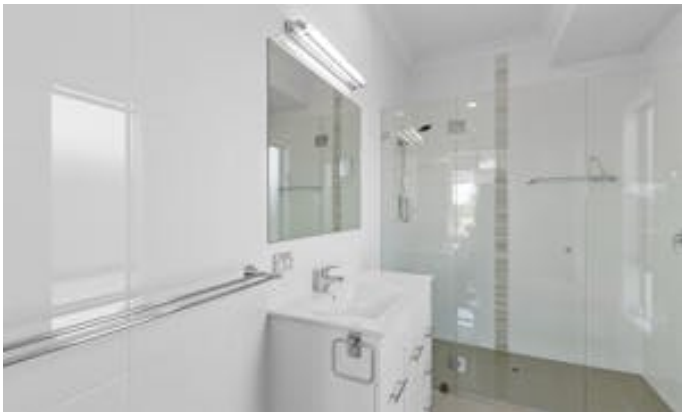
reduced electricity costs.

Set on a generous block and finished to the highest standards, this property represents a rare opportunity to secure a premium lifestyle in a peaceful, well-established area. Don't miss your chance to call 22 J S McEwin Terrace home - it's the complete package.

- Land Area 875.00 square metres
- Bedrooms: 4
- Bathrooms: 2
- Double garage
- Double carport











Living:	288.21 sqm
Porch/Garage:	50.59 sqm
Terrace:	43.59 sqm
Total:	382.39 sqm

This Drawing is for illustration purposes only.
All measurements are internal and approximate.
Details intended to be relied upon should be
independently verified.
Produced by Open2view.com