

## 27 John Duigan Drive, YARRAWONGA, VIC 3730

### Hangar & Land with Direct Runway Access!

An exceptional opportunity for aviation enthusiasts, investors, or developers â## this purpose-built aircraft hangar with accompanying land offers premium access and potential in the established Airport precinct.

This type of property will attract growing attention from agri-business operators, including aerial spraying contractors and precision farming providers. The location, access and infrastructure make it a natural hub for agricultural aviation services, with strong demand for hangar space and logistical support in the region.

Set on a generous allotment, this fully fenced property features a custom-designed hangar with direct access to the runway, allowing seamless movement for private aircraft. Designed with functionality and aviation storage in mind, the hangar is ideal for private use or as an income-generating asset through leaseback or aviation storage services.

### KEY FEATURES:

- Strategically positioned within Yarrawonga Airport precinct.

**TYPE:** For Sale

**INTERNET ID:** 300P181158

### SALE DETAILS

**\$850,000+gst**

### CONTACT DETAILS

**Elders Real Estate  
Yarrawonga**

48 Belmore Street  
Yarrawonga, VIC  
03 5743 9500

**Leigh Ramsdale**  
0408 385 150

- Direct taxiway access to the sealed runway.
- Fully fenced for security and privacy.
- Purpose-built hangar with specific aviation specifications in mind.
- Subdivision potential (STCA) to develop or expand existing infrastructure.
- Prime location to Lake Mulwala, Resort Accommodation, Fine Dining, Wineries & Championship Golf Courses just minutes away.

Whether you're seeking a base for your aircraft, looking to expand into aviation-related development or secure a unique landholding with long-term upside, 27 John Duigan Drive delivers on all fronts.

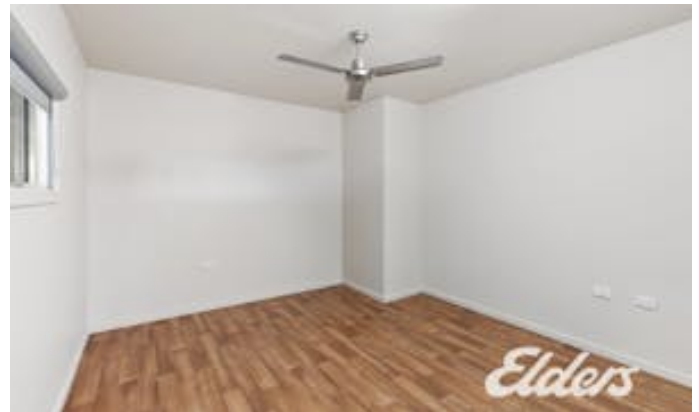
Opportunities like this are rare – act now to secure your piece of Yarrawonga's aviation future.

Other features: Close to Schools, Close to Shops, Close to Transport, Exhaust, Heating, High Clearance, Kitchenette

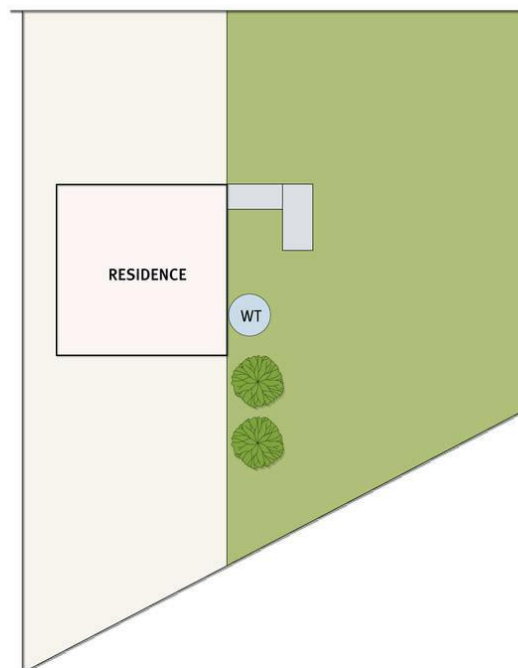
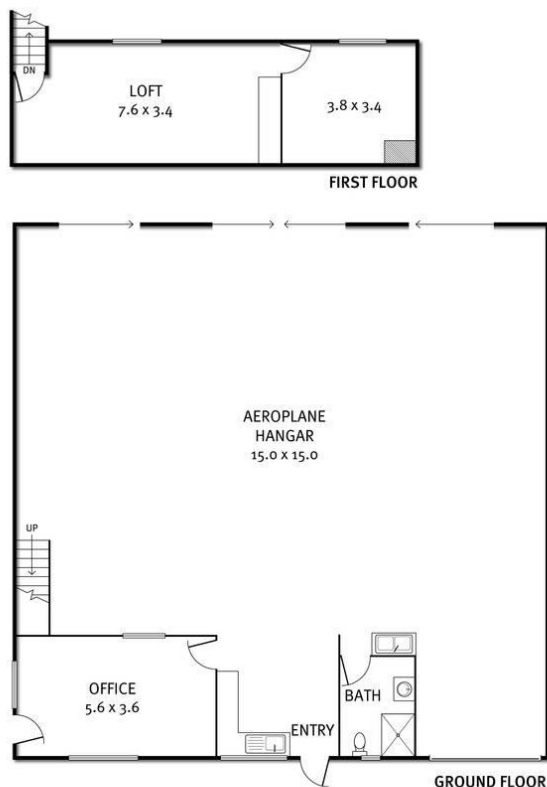
- Land Area 1,633.00 square metre
- Bedrooms: 1
- Bathrooms: 1







## 27 John Duigan Drive, Yarrawonga



THE ABOVE PLAN IS AN ARTIST'S IMPRESSION ONLY, IT INCLUDES ELEMENTS THAT ARE FOR DISPLAY PURPOSES ONLY AND MAY NOT BE TO SCALE.  
LANDSCAPING SHOWN IS INDICATIVE ONLY. DIMENSIONS ARE APPROXIMATE.