



40 Burrawing Creek Road, LIPSON, SA 5607

Lifestyle Property close to the Coast

41.35 hectares, 102.18 acres

Located on the northern end of Tumby Bay, just east of Lipson is this beautiful rural lifestyle property close to the coast.

Boasting over 41.3 hectares (102 acres) of mostly good arable farmland, there is also a winter creek running through it with established native vegetation.

The home was built around 2012 with an open plan living layout.

Features include timber floors throughout, nice stylish country style kitchen, downlights, heating & cooling.

All three bedrooms include ceiling fans, and the master bedroom has walk in robe and en-suite.

The home has a wraparound timber deck with scenic outlook over the property and with an ocean backdrop.

TYPE: For Sale

INTERNET ID: 300P181199

SALE DETAILS

\$720,000 - \$760,000

CONTACT DETAILS

PORT LINCOLN

88 Liverpool Street
PORT LINCOLN, SA
08 8621 2100
RLA: 62833

Luke Duncan
0458 141 321

There is a 12.2m x 7.7m shed with concrete floor and power, a 9.2m x 5.8m carport, garden shed, and rainwater tanks plumbed to the home.

Mains water is also connected.

This is a rare opportunity to secure a well-cared for lifestyle property close to Tumby Bay.

Disclaimer: We have in preparing this information used our best endeavours to ensure that the information contained herein is true and accurate but accept no responsibility and disclaim all liability in respect of any errors, omissions, inaccuracies, or misstatements that may occur. Prospective purchasers should make their own enquiries to verify the information contained herein. Elders Real Estate RLA62833

- Land Area 41.35 hectares
- Bedrooms: 3
- Bathrooms: 2

HOMESTEAD

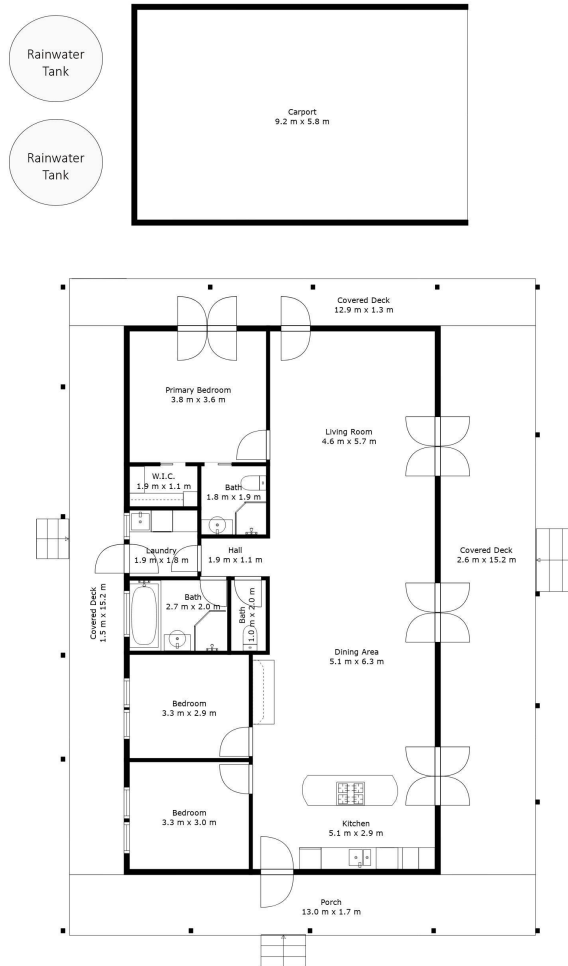
Bedrooms	3
Bathrooms	2









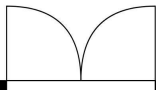


TOTAL: 127 m²

FLOOR 1: 127 m², FLOOR 2: 0 m²

EXCLUDED AREAS: PORCH: 22 m², COVERED DECK: 81 m², CARPORT: 54 m²,
SHED: 94 m², GARDEN SHED: 9 m²





Garden Shed
4.4 m x 2.1 m



Rainwater
Tank



Shed
12.2 m x 7.7 m

TOTAL: 127 m2
FLOOR 1: 127 m2, FLOOR 2: 0 m2
EXCLUDED AREAS: PORCH: 22 m2, COVERED DECK: 81 m2, CARPORT: 54 m2,
SHED: 94 m2, GARDEN SHED: 9 m2

