



11 Tooreburrup Road, BREMER BAY, WA 6338

A Rare Opportunity on Point Henry

- * Perched high on a hill with breathtaking 180° ocean views
- * Modern and stylish design â## walk in walk out, everything included
- * 2 bedrooms + 1 bathroom with open-plan kitchen, dining and living
- * Future potential â## ideal Airbnb/ancillary dwelling with scope for a larger main residence

Perched in an enviable elevated position on a 3.09HA block, this striking little home captures sweeping ocean views that stretch as far as the eye can see. Thoughtfully designed to be both modern and stylish, the home offers 2 comfortable bedrooms, a central bathroom, and open-plan kitchen, dining and meals â## perfectly balanced for relaxed coastal living or holiday vacations.

This 2024 build is simple yet effective in its layout, the property has operated as an Airbnb, making it an attractive option for those seeking an income stream or a lock-and-leave escape.

TYPE: For Sale

INTERNET ID: 300P181594

SALE DETAILS

\$800,000

CONTACT DETAILS

Albany Real Estate
189 Chester Pass Road
ALBANY, WA
08 9842 7900

Jeni Dawson
0447 790 129

The newly completed front veranda has heaters for the cooler evenings and is the ultimate vantage point to enjoy the spectacular outlook â## imagine starting your day with coffee in hand as the sun rises over the ocean.

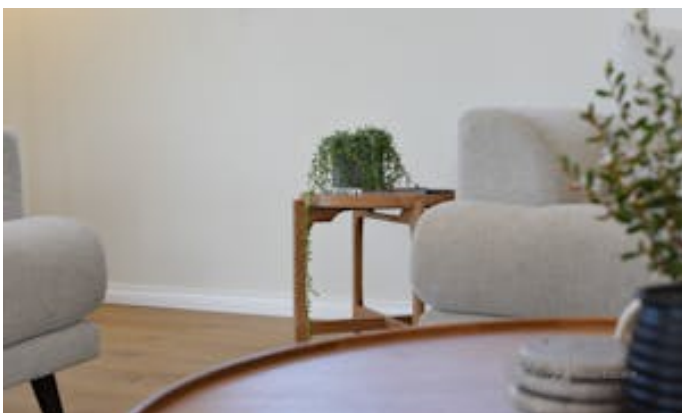
While the current home is a gem in its own right, the real value lies in its future potential. It can serve as ancillary accommodation, leaving you the freedom to develop and build a larger main residence on the property if desired.

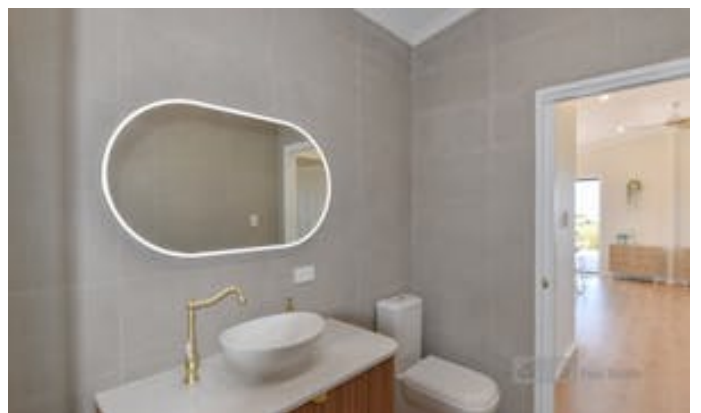
The property has mains power, water tanks and a septic system.

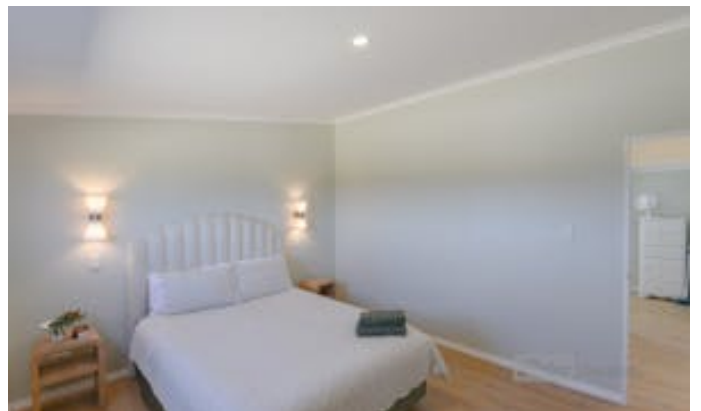
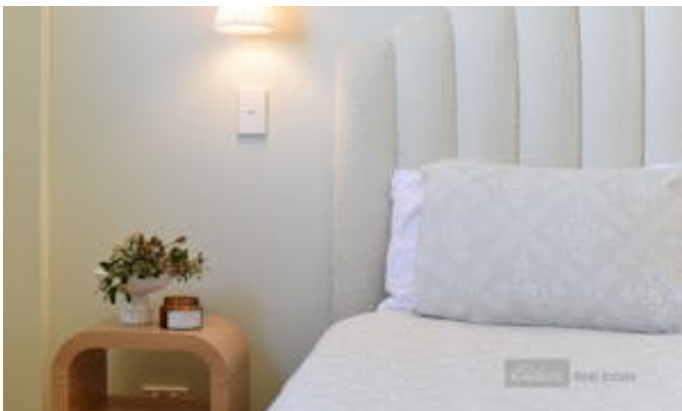
A rare opportunity to secure a low-maintenance coastal retreat, with everything included to just walk in and enjoy with views that will never fail to impress.

Other features: Bush Retreat, Ocean Views

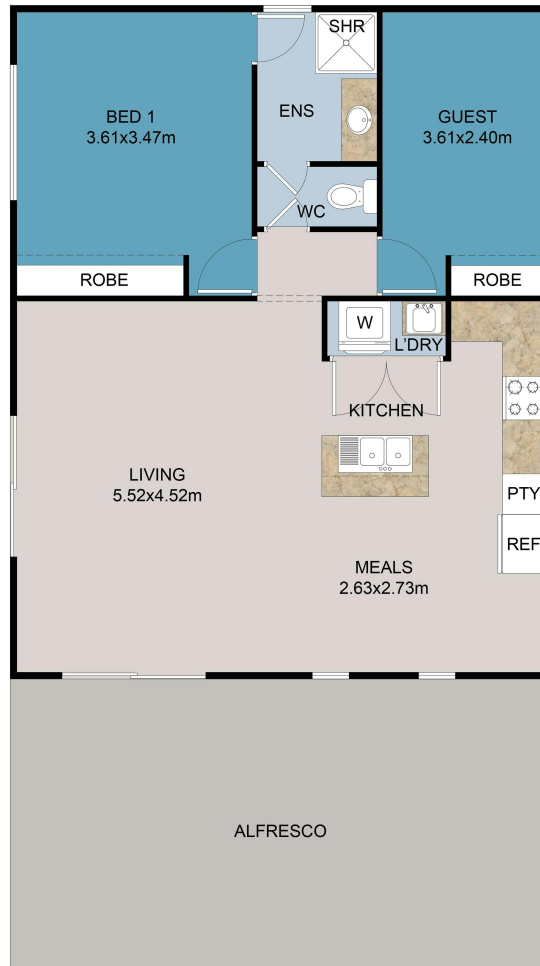
- Land Area 3.09 hectares
- Bedrooms: 2
- Bathrooms: 1











FLOOR PLAN

This floor plan including furniture, fixture measurements and dimensions are approximate and for illustrative purposes only. BoxBrownie.com gives no guarantee, warranty or representation as to the accuracy and layout. All enquiries must be directed to the agent, vendor or party representing this floor plan.

11 Tooreburrup Rd Bremer Bay