



13/157 Main South Road, NORMANVILLE, SA 5204

Retire Beside The Seaside!

Enjoy your retirement beside the best beach in South Australia.

Come and experience this beautiful quiet country community.

This villa is located within Normanville's Beachside Retirement Community, where you can enjoy a secure community estate with fully maintained grounds and community facilities including a central meeting room and stocked library.

The villa itself features three bedrooms, each with built-in robes, a modern kitchen - looking to a light filled atrium which is connected to the living and dining areas. A large undercover deck with good quality breeze proof blinds provides for great outdoor living. This space looks over the fully fenced side yard with a lovely lawn and simple garden, plus a garden shed and paved paths.

It's a 400m walk to the beautiful Normanville beach, and 1.2 km along the beach to the famous Aqua Blue Caf   and the beach kiosk. You are just under an hour from Adelaide, but you're a world away from the city! Hear the waves crash and the birds sing in this perfect piece of paradise.

TYPE: For Sale

INTERNET ID: 300P181845

SALE DETAILS

\$360,000

CONTACT DETAILS

Normanville
91 Main Road
Normanville, SA
08 8598 6100

Luke Hutt
0418 815 049

If you're ready to escape the humdrum, over 55 and not working full time, then this could be the place for you!

Give Luke a call today before this opportunity goes away!

Disclaimer: We have in preparing this information used our best endeavours to ensure that the information contained herein is true and accurate but accept no responsibility and disclaim all liability in respect of any errors, omissions, inaccuracies or misstatements that may occur. Prospective purchasers should make their own enquiries to verify the information contained herein. RLA 62833

Other features: Area Views, Carpeted, Security Access

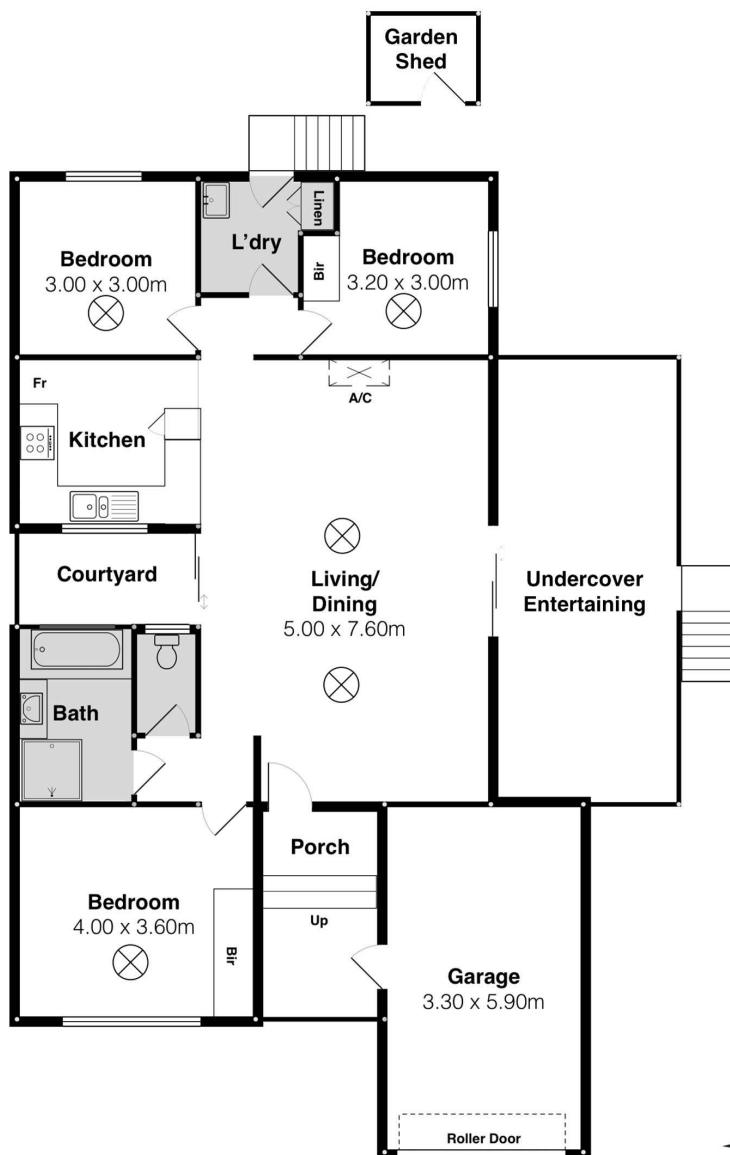
- Bedrooms: 3
- Bathrooms: 1
- Car Parks: 1
- Single garage











13 Beachside Village Estate, Normanville

Scale in metres. This drawing is for illustration purposes only. All measurements are approximate and details intended to be relied upon should be independently verified.



PRODUCED BY
SOUTH COAST STUDIOS