



117 Lady Musgrave Circuit, BURDELL, QLD 4818

Family-Friendly Living in a Prime Residential Setting!

Welcome to 117 Lady Musgrave Circuit, a beautifully presented family home in the heart of North Shore, Burdell - one of Townsville's most sought-after communities. Perfectly positioned on a generous corner block, this spacious four-bedroom residence offers unbeatable convenience for busy families.

Just a short stroll from St Clare's Catholic School and the vibrant North Shore Shopping Precinct, everything you need is right at your fingertips. Whether it's grabbing groceries, enjoying a coffee, or dropping the kids off at school, your daily routine becomes effortless.

Surrounded by parks, playgrounds, and walking trails, the area also offers plenty of outdoor fun, while nearby public transport and major roads make commuting a breeze.

Other features: Carpeted, Close to Schools, Close to Shops, Close to Transport, Openable Windows, Roller Door Access

- Land Area 695.00 square metres
- Bedrooms: 4
- Bathrooms: 2

The particulars contained herein are supplied for information only and shall not be taken as a representation in any respect on the part of the vendor or its agent. Interested parties should contact the nominated person or office for full and current details.

TYPE: For Sale

INTERNET ID: 300P181959

SALE DETAILS

Offers Over \$690,000

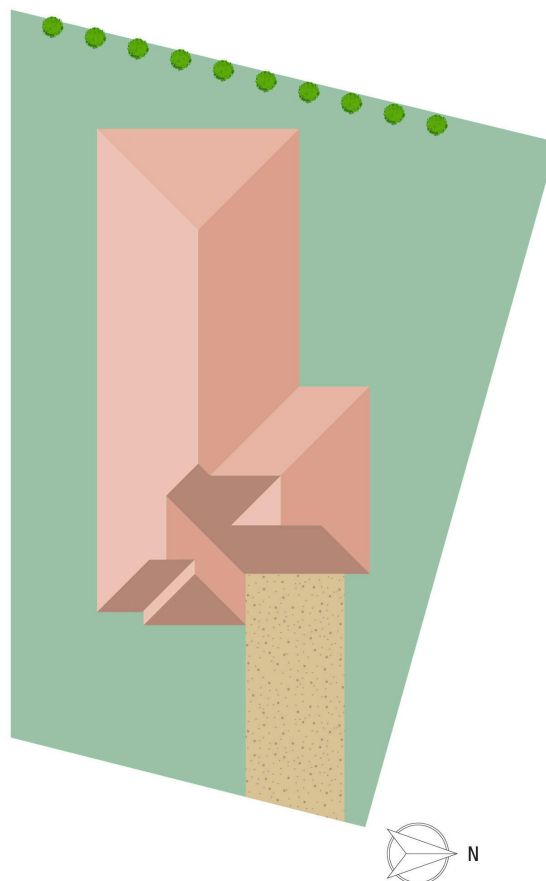
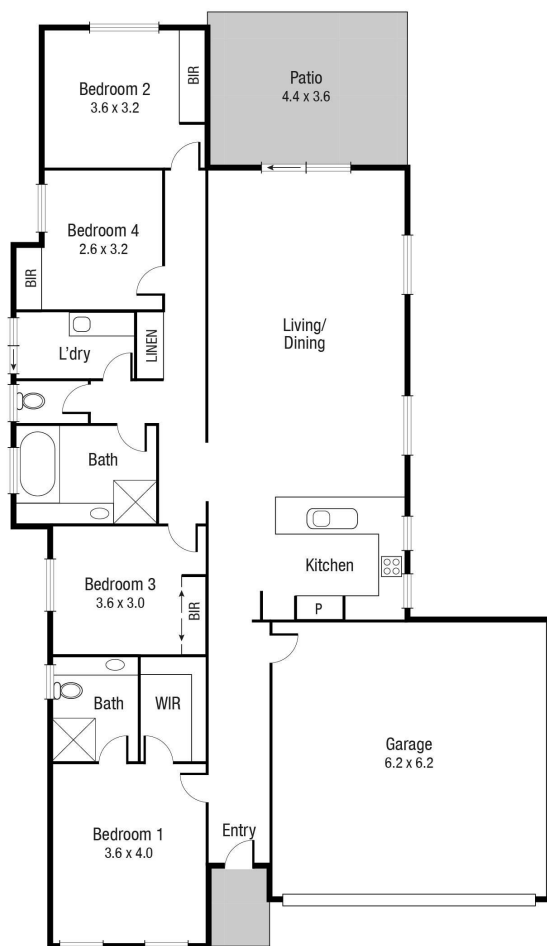
CONTACT DETAILS

Brenda Thompson
0447 072 899

- Double garage
- Ensuite







Scale in metres. Indicative only. Dimensions are approximate. All information contained herein is gathered from sources we believe to be reliable. However we cannot guarantee its accuracy and interested persons should rely on their own enquiries.

TOTAL AREA : 180 sq.m

117 Lady Musgrave Cct, Burdell